

FORT DRUM, NEW YORK

# RNAV (GPS) RWY 3

WAAS CH 93714 W03A	APCH CRS 029°	Rwy ldg TDZE Arprt Elev	8637 685 690
--------------------------	------------------	-------------------------------	--------------------

AL-5754 (USA)

WHEELER SACK AAF (KGTB)

RNP APCH - GPS

ALS-1

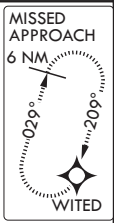
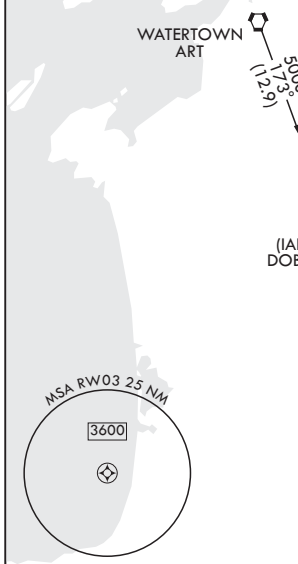
MISSED APPROACH: Climb to 4000 direct WITED and hold.

\* When ALS inop, increase vis to 3/4 mile.  
\*\* When ALS inop, increase vis to 1 1/4 miles.



ATIS 119.525	APP CON/DEP CON 124.875 257.6	TOWER 118.75 290.25	GND CON 121.9 229.8	CLNC DEL 121.9	ASR/PAR
-----------------	----------------------------------	------------------------	------------------------	-------------------	---------

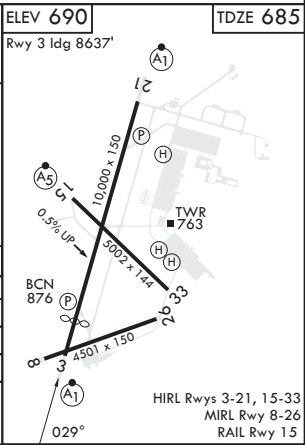
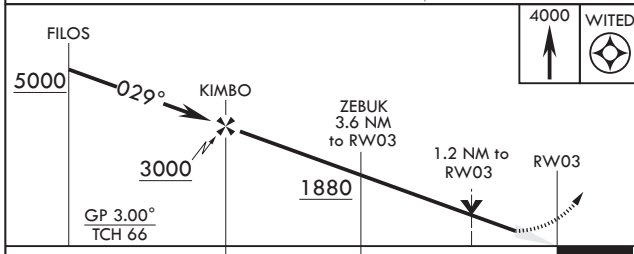
\*\*\* When ALS inop, increase CAT AB vis to 1 mile; CAT C vis to 1 3/8 miles; CAT DE vis to 1 1/2 miles.  
\*\*\*\* Circling NA E of Rwy 21 and 33. Circling NA for CAT BCD to Rwy 8. Circling NA for CAT E to Rwy 8-26 and 15-33.



For uncompensated Baro-VNAV systems, LNAV/VNAV NA below -16°C (4°F) or above 48°C (118°F).

NE-2, 18 MAY 2023 to 15 JUN 2023

NE-2, 18 MAY 2023 to 15 JUN 2023



CATEGORY	A	B	C	D	E
LPV DA*	885-1/2		200	(200-1/2)	
LNAV/VNAV DA**	1080-3/4		395	(400-3/4)	
LNAV MDA***	1160-1/2 475 (500-1/2)		1160-1	475 (500-1)	
CIRCLING****	1200-1 510 (600-1)		1220-1 1/2 530 (600-1/2)	1380-2 1/4 690 (700-2 1/4)	1640-3 950 (1000-3)

FORT DRUM, NEW YORK

44°03'N - 75°43'W

WHEELER SACK AAF (KGTB)

Amdt 2 20APR23  
TERPS

# RNAV (GPS) RWY 3

HIRL Rws 3-21, 15-33  
MIRL Rwy 8-26  
RAIL Rwy 15