

WAAS CH 69538 W01A	APP CRS 011°	Rwy Idg TDZE 358 Apt Elev 358	4802
---------------------------------	------------------------	---	-------------

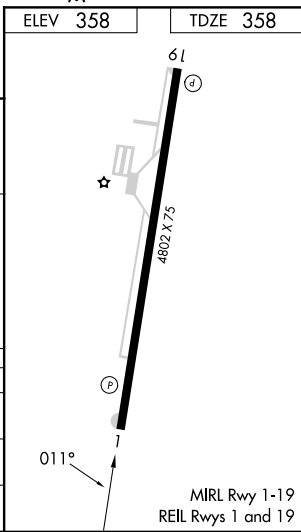
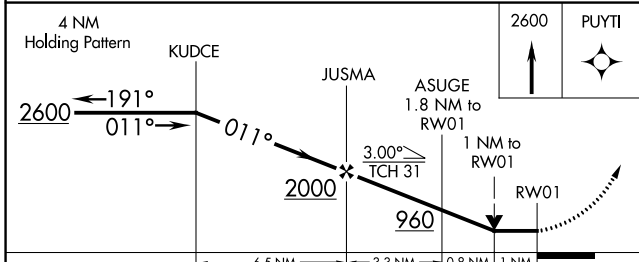
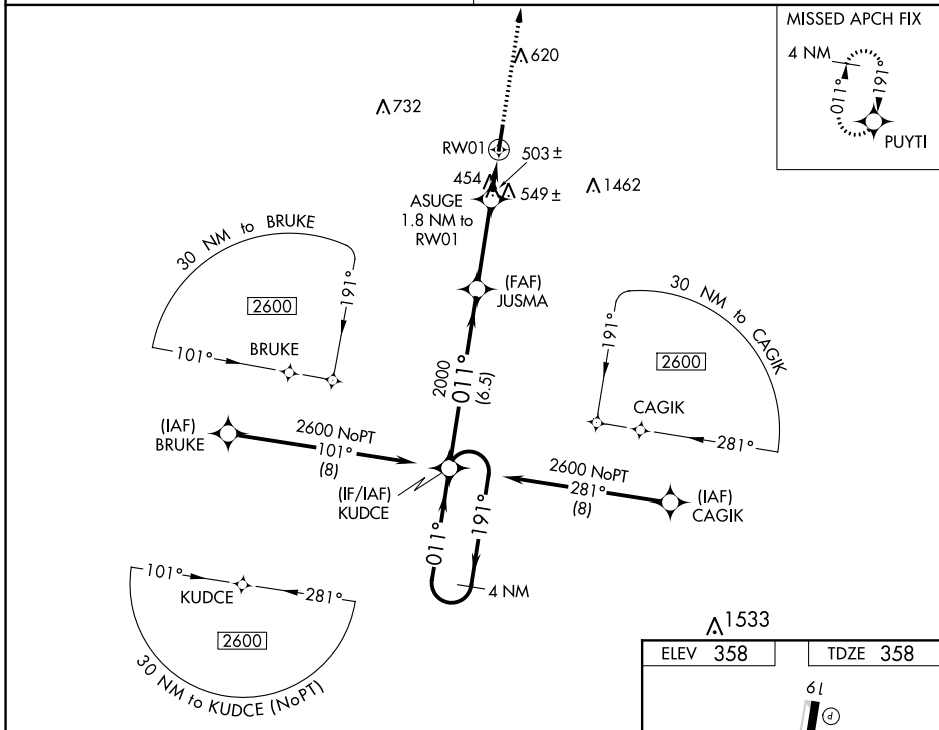
RNAV (GPS) RWY 1

GIBSON COUNTY (TGC)

NA Night landing: Rwy 19 NA. DME/DME RNP-0.3 NA. Helicopter visibility reduction below 3/4 SM NA. Obtain local altimeter setting on CTAF; when not received use McKellar-Sipes Rgnl altimeter setting and increase all MDA 60 feet, increase Circling Cat C visibility 1/4 mile.

MISSED APPROACH: Climb to 2600 direct PUYTI and hold.

MEMPHIS CENTER **134.65 316.15** UNICOM **122.8 (CTAF)**



CATEGORY	A	B	C	D
LP MDA	720-1 362 (400-1)			
LNAV MDA	800-1 442 (500-1)		800-1 3/8 442 (500-1 3/8)	
C CIRCLING	980-1 622 (700-1)		980-1 3/4 622 (700-1 3/4) 1780-3 1422 (1500-3)	

SE-1, 18 MAY 2023 to 15 JUN 2023

SE-1, 18 MAY 2023 to 15 JUN 2023