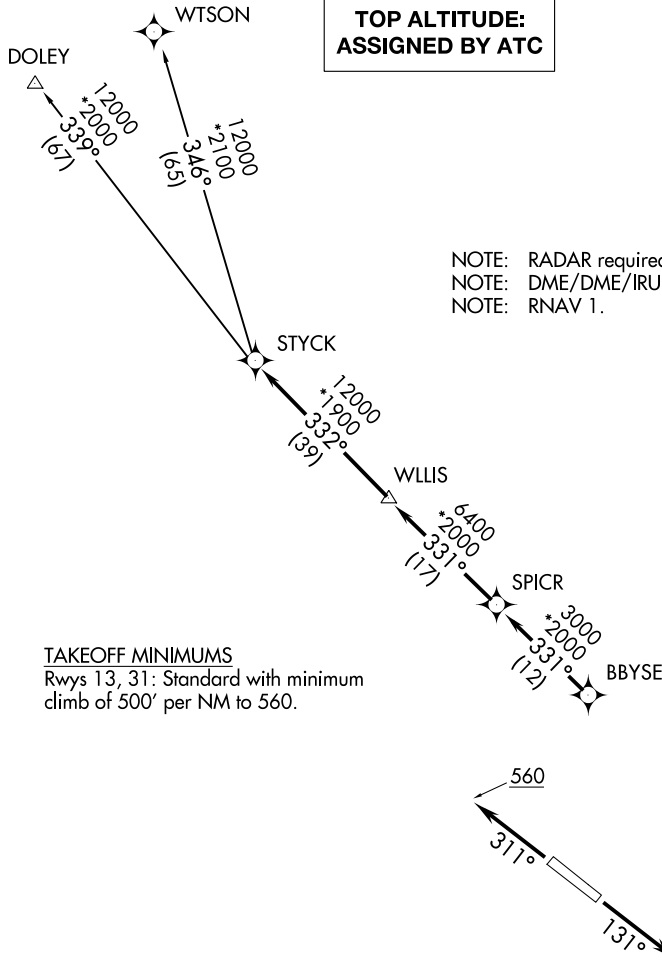


STYCK EIGHT DEPARTURE (RNAV)

AWOS-3
118.075
CTAF
122.8
HOUSTON DEP CON
128.6 360.85

**TOP ALTITUDE:
ASSIGNED BY ATC**



NOTE: RADAR required.
NOTE: DME/DME/IRU or GPS required.
NOTE: RNAV 1.

TAKEOFF MINIMUMS
Rwys 13, 31: Standard with minimum
climb of 500' per NM to 560.

NOTE: Chart not to scale.



DEPARTURE ROUTE DESCRIPTION

TAKEOFF RUNWAY 13: Climb on heading 131° to 560 for RADAR vectors to BBYSE, thence. . .
TAKEOFF RUNWAY 31: Climb on heading 311° to 560 for RADAR vectors to BBYSE, thence. . .
. . . on track 331° to SPICR, then on track 331° to WLLIS, then on track 332° to STYCK, then on
(transition). Maintain ATC assigned altitude. Expect filed altitude 10 minutes after departure.

DOLEY TRANSITION (STYCK8.DOLEY)
WTSON TRANSITION (STYCK8.WTSON)

STYCK EIGHT DEPARTURE (RNAV)