

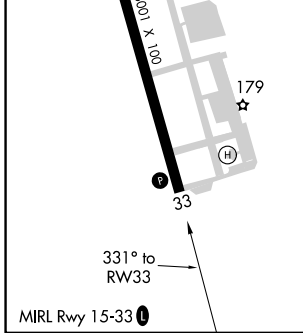
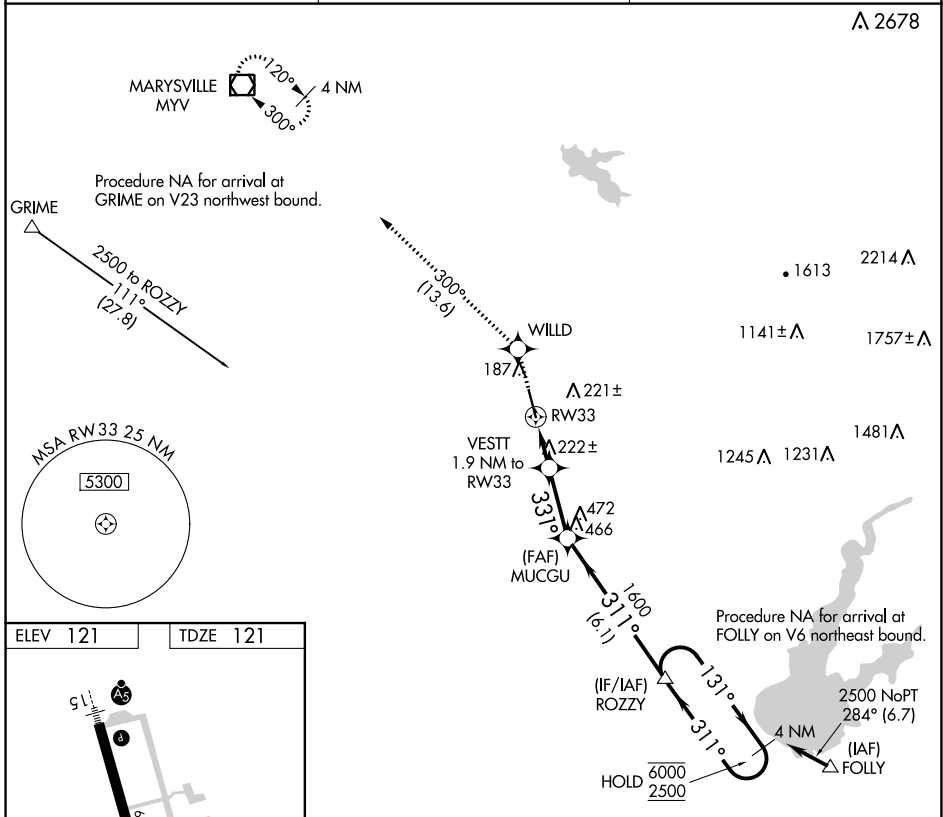
APP CRS	Rwy Idg	<b>6001</b>
<b>331°</b>	TDZE	<b>121</b>
	Apt Elev	<b>121</b>

# RNAV (GPS) RWY 33

LINCOLN RGNL/KARL HARDER FLD (LHM)

RNP APCH.	MISSED APPROACH: Climb to 2000 direct WILLD and on track 300° to MYV VOR/DME and hold.
<p><b>▼</b> Rwy 33 helicopter visibility reduction below 3/4 SM NA. When local altimeter setting not received, use Beale AFB altimeter setting and increase all MDA 40 feet, and increase LNAV Cat C/D visibility 1/8 mile. VDP NA with Beale AFB altimeter setting.</p>	

AWOS-3 <b>124.25</b>	NORCAL APP CON <b>125.4 259.1</b>	UNICOM <b>123.0 (CTAF) 0</b>
-------------------------	--------------------------------------	---------------------------------



2000	WILLD	tr 300°	MYV	ROZZY	4 NM Holding Pattern
	VESTT	1.9 NM to RW33	MUCCGU	ROZZY	4 NM Holding Pattern
		0.9 NM to RW33			
		3.04° TCH 31			
		760	1600	6000	2500
		0.9 NM	1 NM	2.6 NM	6.1 NM
CATEGORY	A	B	C	D	
LNAV MDA	480-1 359 (400-1)				

SW-2, 18 MAY 2023 to 15 JUN 2023

SW-2, 18 MAY 2023 to 15 JUN 2023