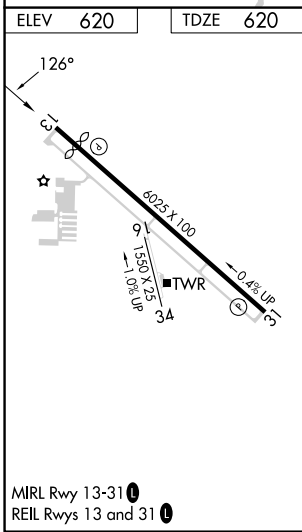
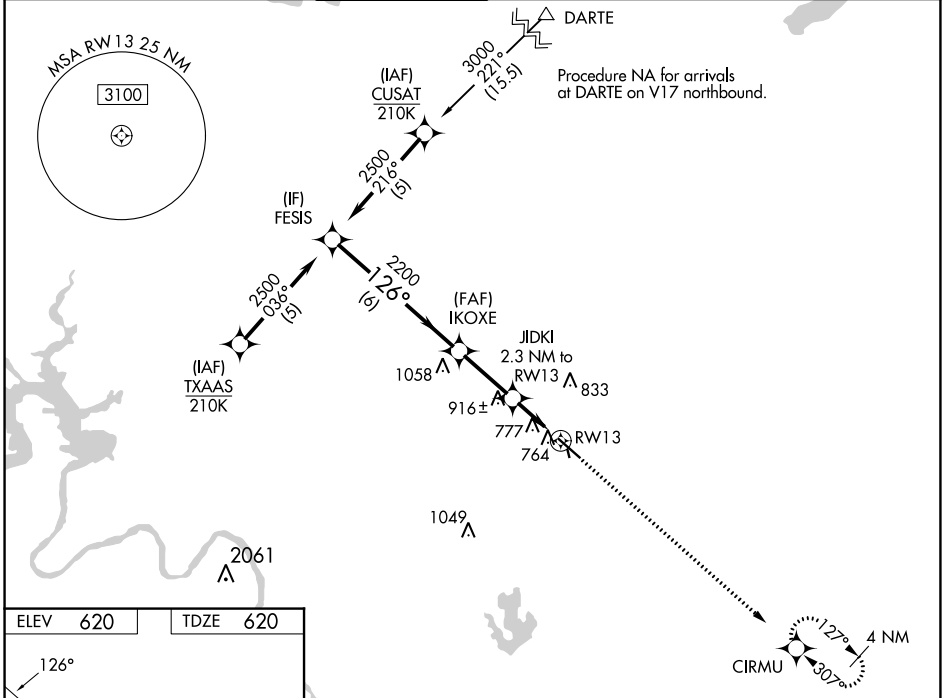


WAAS CH 63116 W13A	APP CRS 126°	Rwy Idg TDZE Apt Elev	5425 620 620
--	------------------------	-----------------------------	---

RNAV (GPS) RWY 13

AUSTIN EXEC (EDC)

RNP APCH - GPS.		<p>⚠ Circling NA to Rwy 16 and 34. Rwy 13 helicopter visibility reduction below $\frac{3}{4}$ SM NA. For uncompensated Baro-VNAV systems, LNAV/VNAV NA below -16°C or above 54°C.</p>		<p>MISSED APPROACH: Climb to 2200 direct CIRMU and hold.</p>	
AWOS-3 118.825	AUSTIN APP CON 127.225 317.65	EXECUTIVE TOWER* 120.3 (CTAF) 0	GND CON 119.45	CLNC DEL 126.025 (When twr closed)	UNICOM 122.975



	FESIS	IKOXE	JIDKI	RWY 13
	2500	2200	2.3 NM to RWY 13	1.3 NM to RWY 13
	2500	2200	1380	2200
	GP 3.00° TCH 40			
	6 NM 2.5 NM 1 NM 1.3 NM			
CATEGORY	A	B	C	D
LPV DA	870- $\frac{3}{4}$ 250 (300- $\frac{3}{4}$)			
LNAV/VNAV DA	1080-1 $\frac{3}{8}$ 460 (500-1 $\frac{3}{8}$)			
LNAV MDA	1080-1 460 (500-1)		1080-1 $\frac{3}{8}$ 460 (500-1 $\frac{3}{8}$)	
C CIRCLING	1140-1 520 (600-1)	1160-1 540 (600-1)	1280-1 $\frac{3}{4}$ 660 (700-1 $\frac{3}{4}$)	1280-2 660 (700-2)