

VOR/DME ACO <b>114.4</b> Chan 91	APP CRS <b>146°</b>	Rwy Idg <b>2768</b> TDZE <b>1188</b> Apt Elev <b>1188</b>
--	------------------------	---

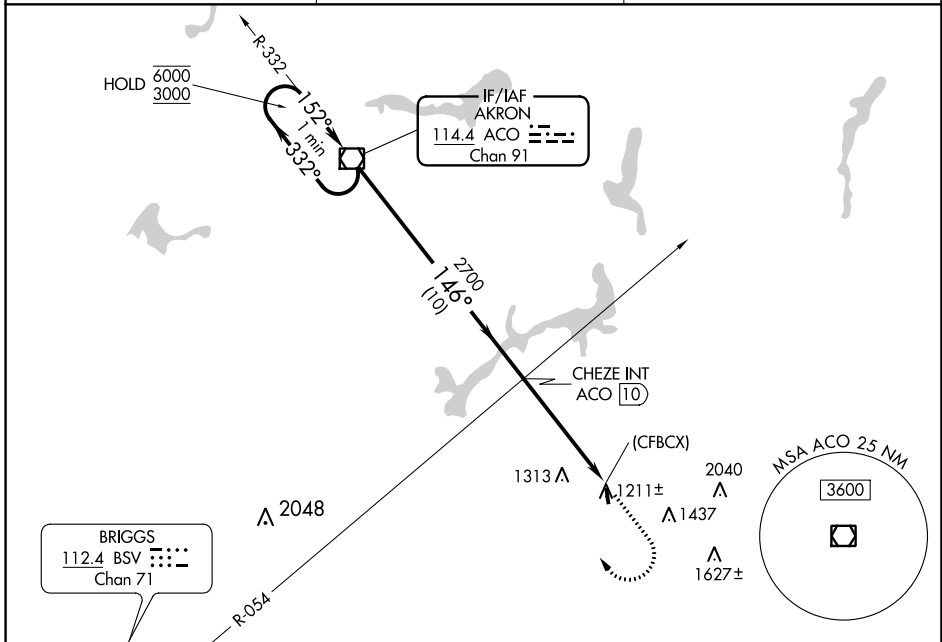
# VOR RWY 18

TRI-CITY (3G6)

**NA** Procedure NA at night. Rwy 18 helicopter visibility reduction below 1 SM NA. Use Akron-Canton Rgnl altimeter setting, when not received, use Ravenna altimeter setting.

**MISSED APPROACH:** Climb to 3000 then climbing right turn to 3100 direct ACO VOR/DME and hold.

CAK ASOS <b>121.05</b>	CLEVELAND APP CON * <b>125.5 371.875</b>	CTAF <b>122.9 0</b>
---------------------------	---	------------------------



One Minute Holding Pattern	ACO VOR/DME		3000	3100	ACO
	6000 ← 332°	3000 → 152°	↑	↷	☐
	2700	CHEZE INT ACO (10)	2.79°	(CFBCX)	
	10 NM	4.8 NM	TCH 40	0.2	
CATEGORY	A	B	C	D	
S-18	1680-1	492 (500-1)	NA		
CIRCLING	1680-1	1800-1	NA		
	492 (500-1)	612 (700-1)			

ELEV	1188	TDZE	1188
	146°	81	2768 X 45
		36	
LIRL Rwy 18-36 0*			
FAF to MAP 4.8 NM			
Knots	60	90	120 150 180
Min:Sec	4:48	3:12	2:24 1:55 1:36

EC-2, 18 MAY 2023 to 15 JUN 2023

EC-2, 18 MAY 2023 to 15 JUN 2023