

OCEANSIDE, CALIFORNIA

COPTER TACAN RWY 21

TACAN NFG Chan 55	APCH CRS 211°	Rwy ldg TDZE Arpt Elev 6005 78 78
-----------------------------	-------------------------	---

AL-5985 [USN] CAMP PENDLETON MCAS (MUNN FLD) (KNFG)

⚠ * When ALS inop, increase vis to 1 mile.
Visibility reduction by Helicopters NA.

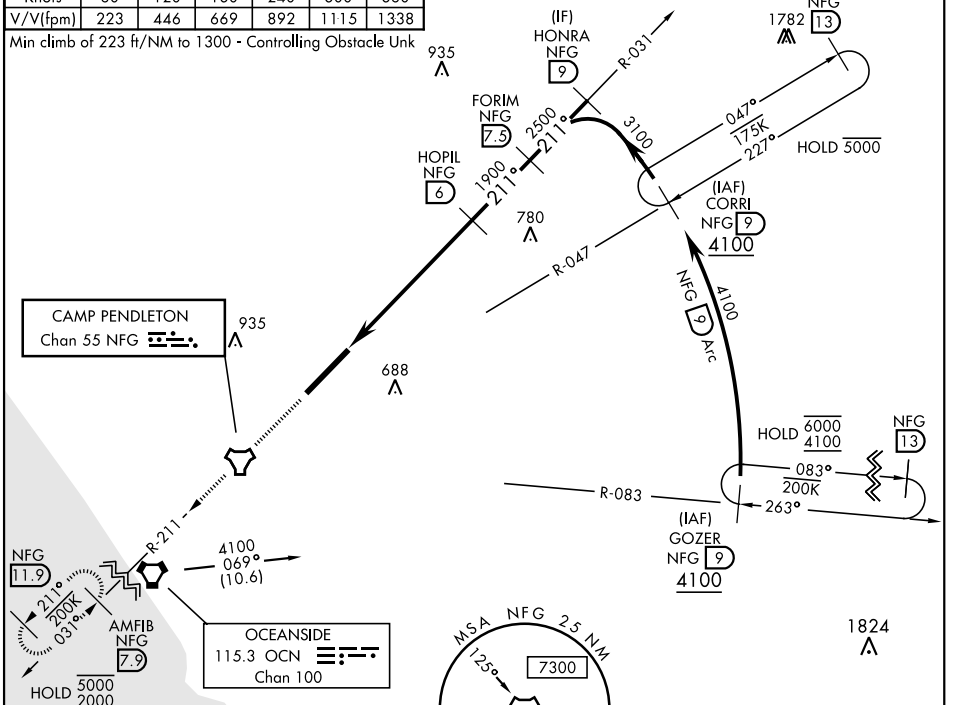
SALSF

MISSED APPROACH: Climb to 2000 direct NFG TACAN then direct AMFIB and hold.

ATIS ★ 285.45	SOCAL APP CON 127.3 323.0	TOWER ★ 128.775 340.2	GND CON 134.675 360.2	CLNC DEL 134.675 271.6	ASR/ PAR
-------------------------	-------------------------------------	---------------------------------	---------------------------------	----------------------------------	-------------

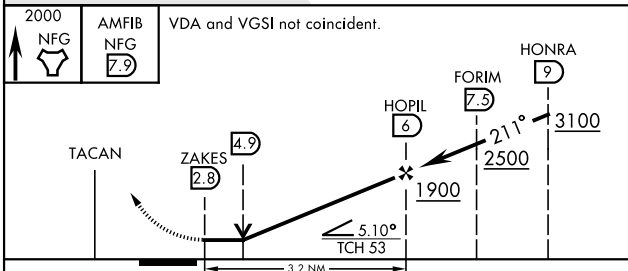
Knots	60	120	180	240	300	360
V/V(fpm)	223	446	669	892	1115	1338

Min climb of 223 ft/NM to 1300 - Controlling Obstacle Unk



EMERG SAFE ALT 100 NM 13,600

2000 NFG AMFIB NFG VDA and VGSI not coincident.



ELEV 78	TDZE 78
---------	---------

211° to TACAN

0.3% DOWN

16955 x 200

TWR 169

HIRL Rwy 3-21

CATEGORY	COPTER	
H-21*	940- $\frac{3}{4}$	862 (900- $\frac{3}{4}$)
CIRCLING	NOT AUTHORIZED	

OCEANSIDE, CALIFORNIA 33°18'N-117°21'W CAMP PENDLETON MCAS (MUNN FLD) (KNFG)

Amdt 5 02DEC21

COPTER TACAN RWY 21

SW-3, 18 MAY 2023 to 15 JUN 2023

SW-3, 18 MAY 2023 to 15 JUN 2023