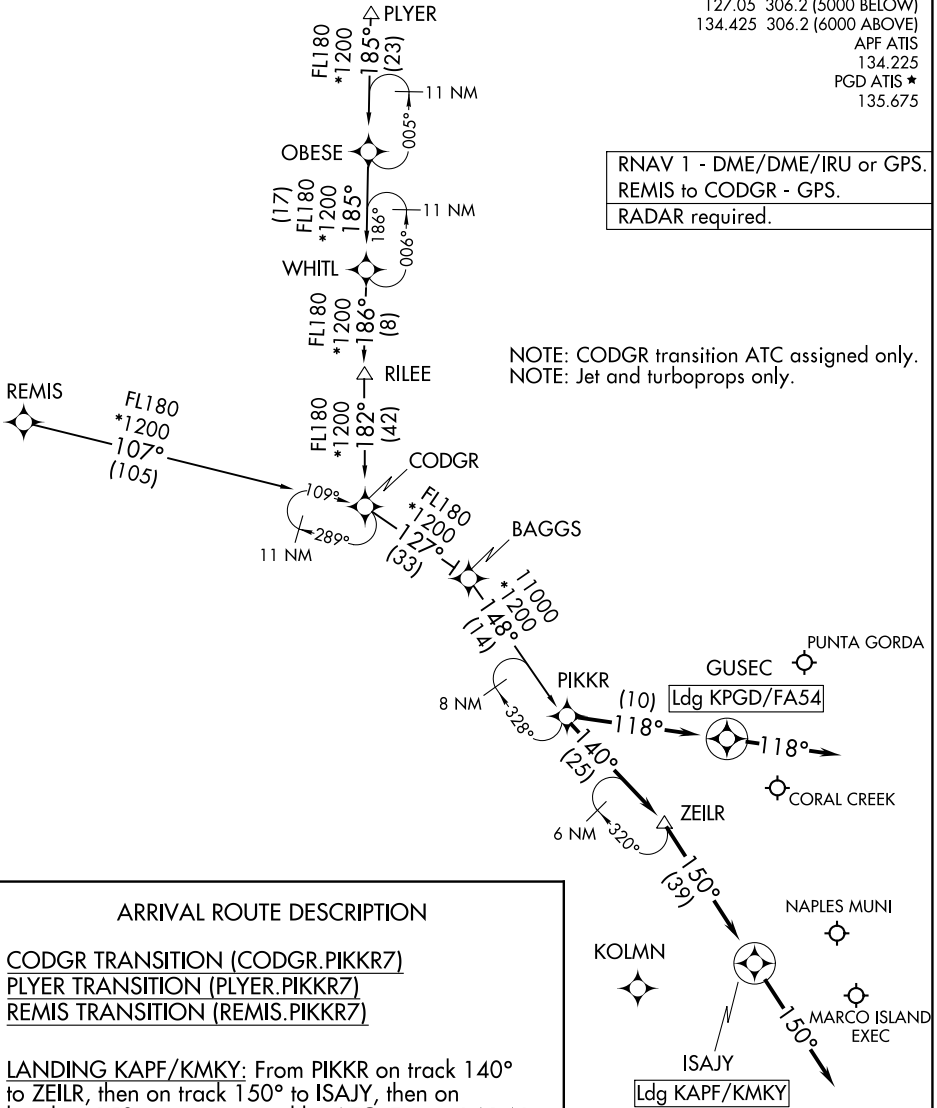


FORT MYERS APP CON ★
 127.05 306.2 (5000 BELOW)
 134.425 306.2 (6000 ABOVE)
 APF ATIS
 134.225
 PGD ATIS ★
 135.675

RNAV 1 - DME/DME/IRU or GPS.
 REMIS to CODGR - GPS.
 RADAR required.

NOTE: CODGR transition ATC assigned only.
 NOTE: Jet and turboprops only.



SE-3, 18 MAY 2023 to 15 JUN 2023

SE-3, 18 MAY 2023 to 15 JUN 2023

ARRIVAL ROUTE DESCRIPTION

CODGR TRANSITION (CODGR.PIKKR7)
PLYER TRANSITION (PLYER.PIKKR7)
REMIS TRANSITION (REMIS.PIKKR7)

LANDING KAPF/KMKY: From PIKKR on track 140° to ZEILR, then on track 150° to ISAJY, then on heading 150° or as assigned by ATC. Expect RADAR vectors to final approach course.

LANDING KPGD/FA54: From PIKKR on track 118° to GUSEC, then on heading 118° or as assigned by ATC. Expect RADAR vectors to final approach course.

NOTE: Chart not to scale.