

WAAS CH 77642 W09A	APP CRS 092°	Rwy Idg TDZE 1007 Apt Elev 1007	4802
--	------------------------	---	-------------

RNAV (GPS) RWY 9

DARKE COUNTY (VES)

RNP APCH:

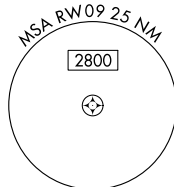
▼ Circling Rwy 27 NA at night. Rwy 9 helicopter visibility reduction below $\frac{3}{4}$ SM NA.
For uncompensated Baro-VNAV systems, LNAV/VNAV NA below -16° C or above 54° C.

MISSED APPROACH:
Climb to 2700 direct
WEGLU and hold.

AWOS-3PT
125.9

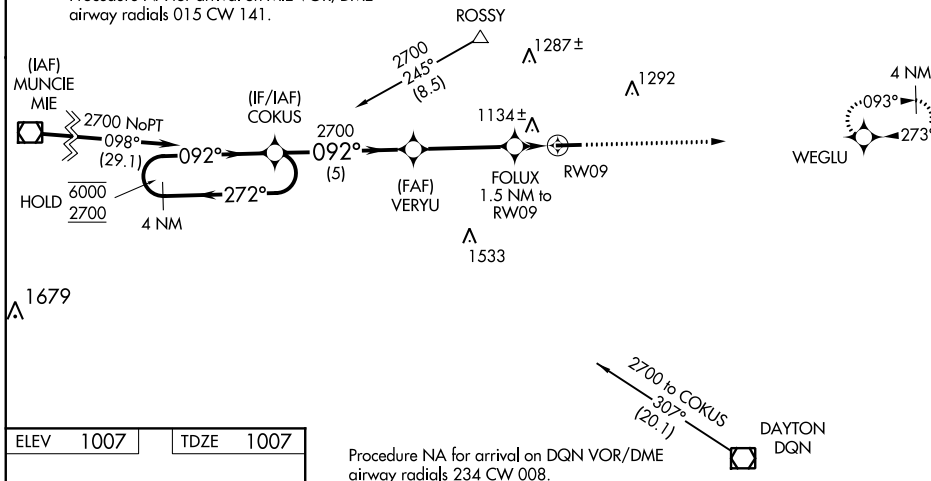
COLUMBUS APP CON
118.425 352.05

UNICOM
122.8 (CTAF) 0

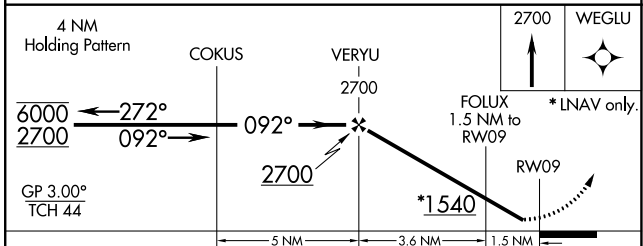
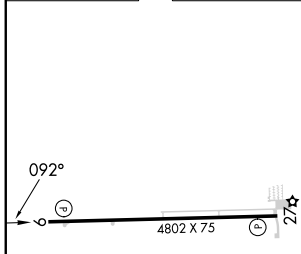


Procedure NA for arrivals at
ROSSY on V55 southeast bound
and V210 eastbound.

Procedure NA for arrival on MIE VOR/DME
airway radials 015 CW 141.



ELEV 1007	TDZE 1007
-----------	-----------



CATEGORY	A	B	C	D
LPV DA	1257-1 250 (300-1)			NA
LNAV/VNAV DA	1400-1 $\frac{1}{8}$ 393 (400-1 $\frac{1}{8}$)			NA
LNAV MDA	1400-1	393 (400-1)	1400-1 $\frac{1}{8}$ 393 (400-1 $\frac{1}{8}$)	NA
C CIRCLING	1440-1 433 (500-1)	1480-1 473 (500-1)	1660-1 $\frac{3}{4}$ 653 (700-1 $\frac{3}{4}$)	NA

REIL Rwy 9 and 27 **0**
MIRL Rwy 9-27 **0**

EC-2, 18 MAY 2023 to 15 JUN 2023

EC-2, 18 MAY 2023 to 15 JUN 2023