

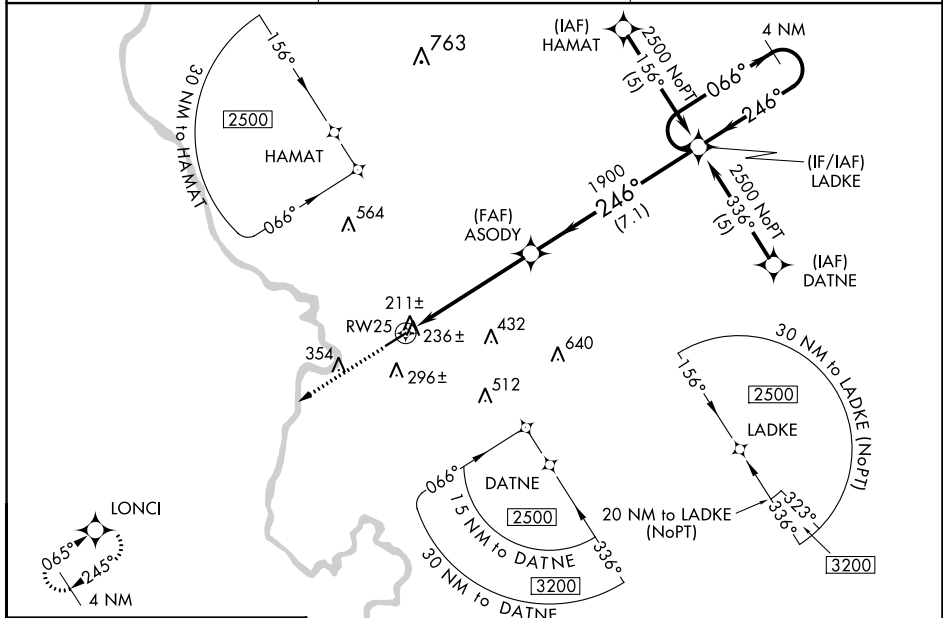
WAAS CH 42818 W25A	APP CRS 246°	Rwy Idg 5003 TDZE 147 Apt Elev 147
--	------------------------	---

RNAV (GPS) RWY 25

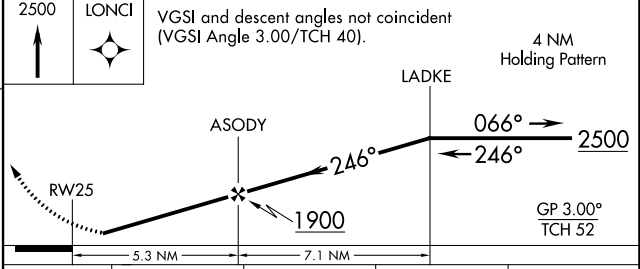
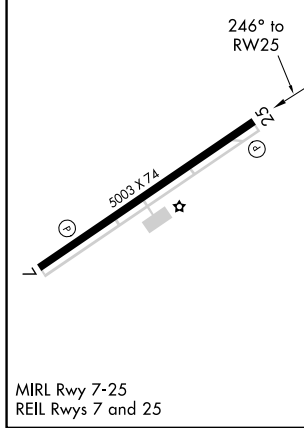
MARLBORO COUNTY JETPORT-H E AVENT FLD (BBP)

<p>RNP APCH.</p> <p>▼ Baro-VNAV NA when using Florence altimeter setting. For uncompensated Baro-VNAV systems, LNAV/VNAV NA below -15°C or above 47°C. Rwy 25 helicopter visibility reduction below 3/4 SM NA. When local altimeter setting not received, use Florence altimeter setting and increase all DA 61 feet and MDA 80 feet. Increase LPV all Cats, and LNAV Cat C and D visibility 1/4 mile.</p>	<p>MISSED APPROACH: Climb to 2500 direct LONCI and hold.</p>
---	--

<p>AWOS-3PT 123.825</p>	<p>FLORENCE APP CON ★ 118.6 341.7</p>	<p>UNICOM 122.8 (CTAF)</p>
------------------------------------	--	---------------------------------------



ELEV 147	TDZE 147
----------	----------



CATEGORY	A	B	C	D
LPV DA	441-1 294 (300-1)			
LNAV/VNAV DA	621-1 3/4 474 (500-1 3/4)			
LNAV MDA	680-1	533 (600-1)	680-1 1/2 533 (600-1 1/2)	680-1 3/4 533 (600-1 3/4)

SE-2, 18 MAY 2023 to 15 JUN 2023

SE-2, 18 MAY 2023 to 15 JUN 2023