

APP CRS	Rwy Idg	4032
066°	TDZE	775
	Apt Elev	775

RNAV (GPS) RWY 7

PAUL C MILLER/SPARTA (8D4)

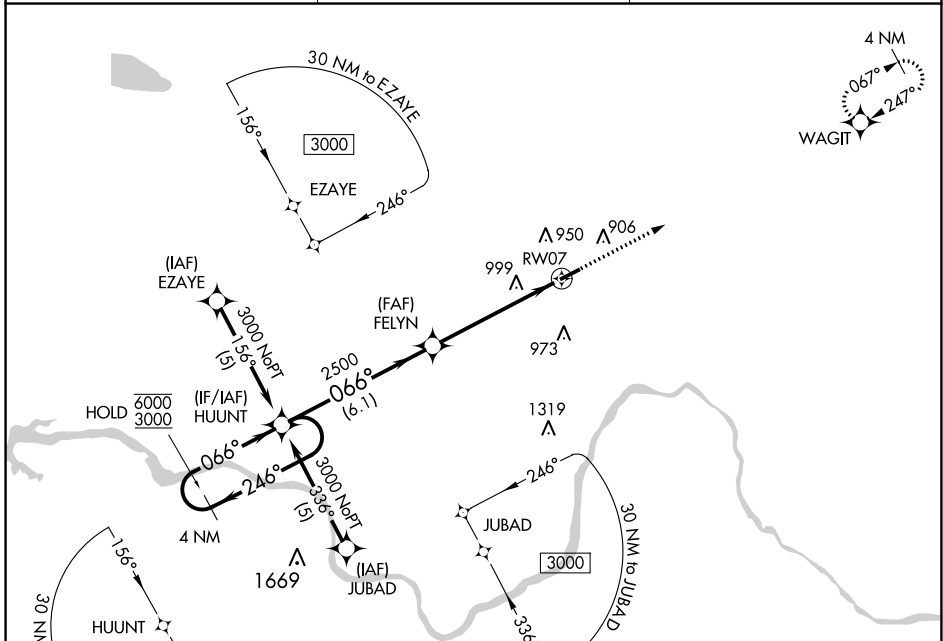
RNP APCH:

▼ Rwy 7 helicopter visibility reduction below 3/4 SM NA. When local altimeter setting not received, use Grand Rapids altimeter setting. VDP NA when using Grand Rapids altimeter setting.

▲NA

MISSED APPROACH: Climb to 3000 direct WAGIT and hold.

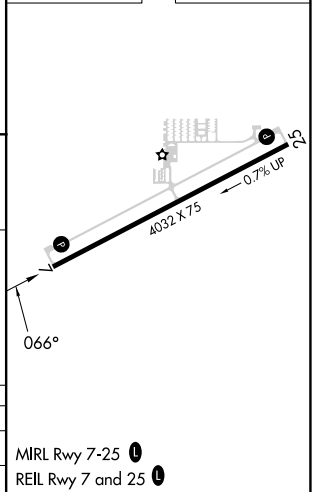
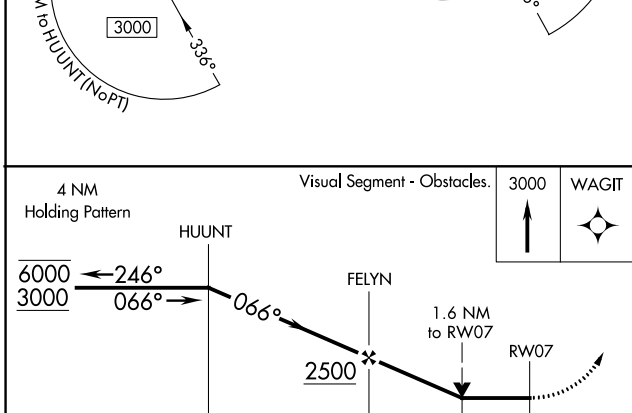
AWOS-AV 132.95	GREAT LAKES APP CON * 124.6 257.6	UNICOM 122.8 (CTAF) 0
--------------------------	---------------------------------------------	---------------------------------



EC-1, 18 MAY 2023 to 15 JUN 2023

EC-1, 18 MAY 2023 to 15 JUN 2023

ELEV 775	TDZE 775
----------	----------



CATEGORY	A	B	C	D
LNAV MDA	1380-1	605 (700-1)		NA
CIRCLING	1380-1	605 (700-1)		NA

MIRL Rwy 7-25 **0**
REIL Rwy 7 and 25 **0**