

WAAS CH <b>86231</b> <b>W16A</b>	APP CRS <b>156°</b>	Rwy Idg TDZE Apt Elev	<b>4435</b> <b>1459</b> <b>1478</b>
----------------------------------------	------------------------	-----------------------------	-------------------------------------------

# RNAV (GPS) RWY 16

TAYLOR COUNTY (MDZ)

RNP APCH.

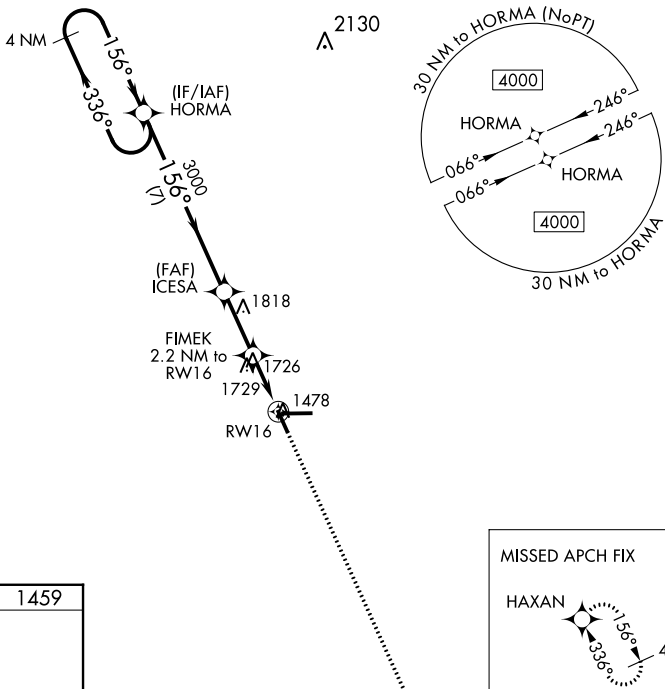
**⚠** When local altimeter setting not received, use Merrill altimeter setting and increase all MDA 100 feet and increase all Cat C/D visibility  $\frac{1}{4}$  mile. Rwy 16 helicopter visibility reduction below  $\frac{3}{4}$  SM NA. VDP NA when using Merrill altimeter setting.

**MISSED APPROACH:**  
Climb to 4000 direct HAXAN and hold.

AWOS-3  
**119.025**

MINNEAPOLIS CENTER  
**124.4 317.7**

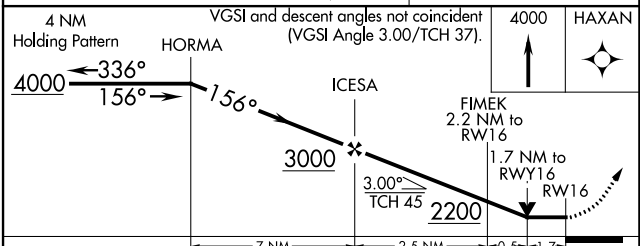
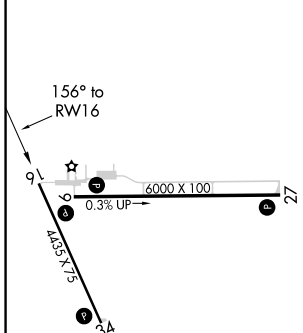
UNICOM  
**122.8 (CTAF)**



EC-3, 18 MAY 2023 to 15 JUN 2023

EC-3, 18 MAY 2023 to 15 JUN 2023

ELEV 1478	TDZE 1459
-----------	-----------



CATEGORY	A	B	C	D
LP MDA	2040-1	581 (600-1)	2040-1 $\frac{3}{4}$	581 (600-1 $\frac{3}{4}$ )
LNAV MDA	2060-1	601 (600-1)	2060-1 $\frac{3}{4}$	601 (600-1 $\frac{3}{4}$ )
CIRCLING	2060-1	582 (600-1)	2060-1 $\frac{3}{4}$ 582 (600-1 $\frac{3}{4}$ )	2180-2 $\frac{1}{4}$ 702 (800-2 $\frac{1}{4}$ )