

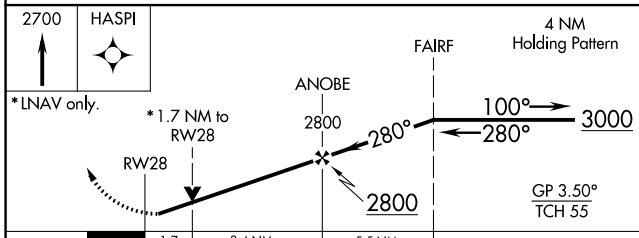
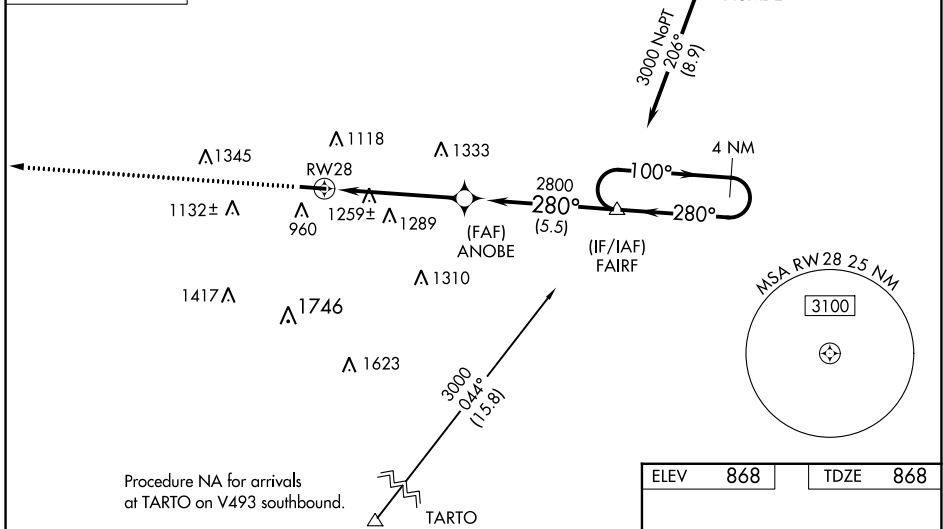
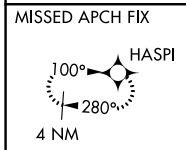
WAAS CH <b>69628</b> <b>W28A</b>	APP CRS <b>280°</b>	Rwy Idg TDZE Apt Elev	<b>5003</b> <b>868</b> <b>868</b>
--	------------------------	-----------------------------	---

# RNAV (GPS) RWY 28

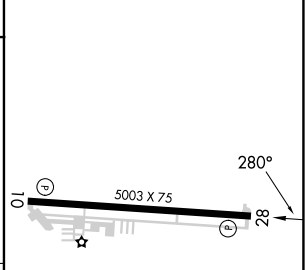
FAIRFIELD COUNTY (L.H.Q.)

RNP APCH.	<p>▼ Baro-VNAV NA when using Rickenbacker Intl altimeter setting. For uncompensated Baro-VNAV systems, LNAV/VNAV NA below -24°C or above 54°C. Rwy 28 helicopter visibility reduction below ¾ SM NA. VDP NA with Rickenbacker Intl altimeter setting. When local altimeter setting not received, use Rickenbacker Intl altimeter setting and increase all DA 48 feet; increase all MDA 60 feet.</p>	MISSED APPROACH: Climb to 2700 direct HASPI and hold.
-----------	---	--

ASOS <b>118.375</b>	COLUMBUS APP CON <b>134.0 279.6</b>	CLNC DEL <b>121.65</b>	UNICOM <b>122.725 (CTAF)</b>
------------------------	--	---------------------------	---------------------------------



ELEV	868	TDZE	868
------	-----	------	-----



CATEGORY	A	B	C	D
LPV DA	1068-¾	200 (200-¾)		NA
LNAV/VNAV DA	1641-2½	773 (800-2½)		NA
LNAV MDA	1520-1	652 (700-1)		NA
CIRCLING	1520-1 652 (700-1)	1560-1 692 (700-1)		NA

REIL Rwy 10 and 28 **1**  
MIRL Rwy 10-28 **1**

EC-2, 18 MAY 2023 to 15 JUN 2023

EC-2, 18 MAY 2023 to 15 JUN 2023