

WAAS Ch 42626 W23A	APP CRS 232°	Rwy Idg TDZE Apt Elev	6202 568 577
--	------------------------	-----------------------------	---

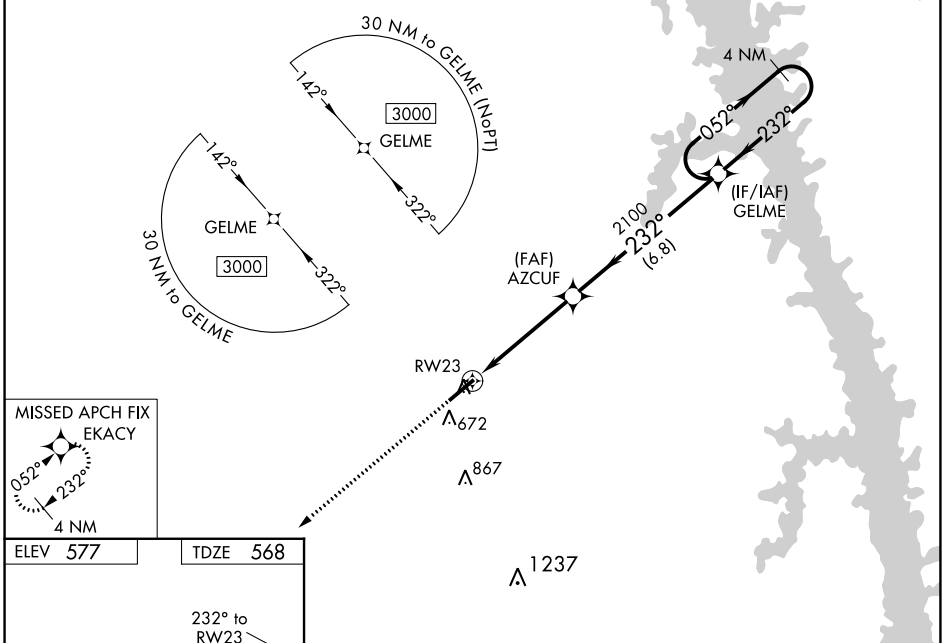
RNAV (GPS) RWY 23

KYLE-OAKLEY FLD (CEY)

⚠ DME/DME RNP-0.3 NA. Baro-VNAV and VDP NA with Mayfield altimeter setting. When local altimeter setting not received use Mayfield altimeter setting: increase all DA/MDA 40 feet, and increase LPV, LNAV/VNAV all Cats, and LNAV Cats C and D visibility 1/8 mile. For inop ODALS, increase LPV and LNAV/VNAV all Cats, and LNAV Cats C and D visibility 1/4 mile. Helicopter visibility reduction below 3/4 SM NA. For uncompensated Baro-VNAV systems, LNAV/VNAV NA below -16°C (4°F) or above 54°C (130°F).

ODALS MISSED APPROACH: Climb to 3000 direct EKACY and hold.

AWOS-3 119.975	MEMPHIS CENTER 133.65 292.15	UNICOM 122.7 (CTAF) 0
--------------------------	--	---------------------------------



ELEV 577 TDZE 568

232° to RW23

6202 X 100

MIRL Rwy 5-23 0
REL Rwy 5 0

3000 EKACY VGSI and RNAV glidepath not coincident (VGSI Angle 3.50/TCH 38). 4 NM Holding Pattern

*LNAV only.

AZCUF 2100 052° 3000
232°
2100

RW23 *1 NM to RW23

GP 3.00° TCH 40

1 NM 3.7 NM 6.8 NM

CATEGORY	A	B	C	D
LPV DA		859-7/8	291 (300-7/8)	
LNAV/DA VNAV		861-7/8	293 (300-7/8)	
LNAV MDA	980-3/4	412 (500-3/4)	980-1	412 (500-1)
C CIRCLING	1000-1 423 (500-1)	1040-1 463 (500-1)	1040-1 1/2 463 (500-1 1/2)	1180-2 603 (700-2)

SE-1, 18 MAY 2023 to 15 JUN 2023

SE-1, 18 MAY 2023 to 15 JUN 2023