

WAAS CH <b>77639</b> <b>W31A</b>	APP CRS <b>320°</b>	Rwy Idg TDZE Apt Elev	<b>6631</b> <b>5289</b> <b>5320</b>
--	------------------------	-----------------------------	---

# RNAV (GPS) X RWY 31

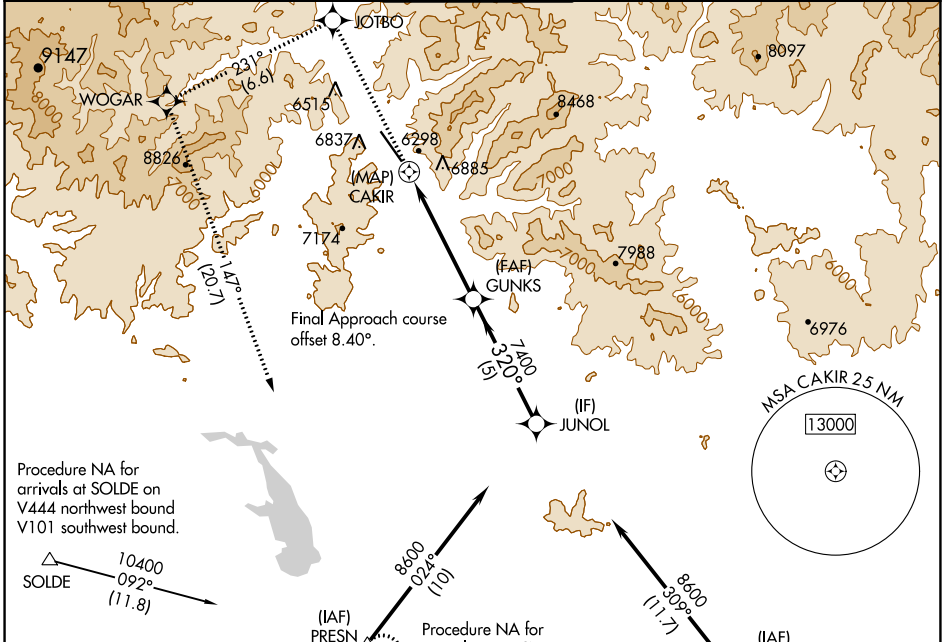
FRIEDMAN MEML (SUN)

**⚠** MISSED APPROACH: (Do not exceed 185 KIAS until WOGAR) Climb to 10500 direct JOTBO and on track 231° to WOGAR and on track 147° to PRESN and hold. \*Missed approach requires minimum climb of 420 feet per NM to 9500; if unable to meet climb gradient, see RNAV (GPS) Y RWY 31.

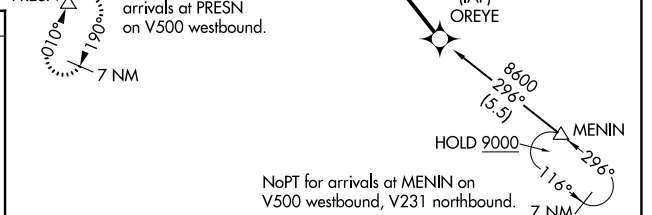
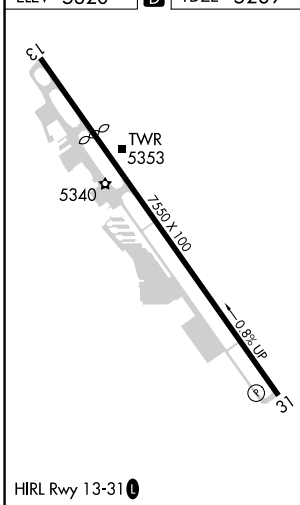
**⚠** DME/DME RNP-0.3 NA. Rwy 31 helicopter visibility reduction below 1 SM NA.

**⚠** -14°C

ATIS <b>128.225</b>	SALT LAKE CENTER <b>118.05 363.0</b>	HAILEY TOWER * <b>125.6 (CTAF) 0</b>	GND CON <b>121.7</b>	UNICOM <b>122.95</b>
------------------------	---	---	-------------------------	-------------------------



ELEV 5320	<b>D</b>	TDZE 5289
-----------	----------	-----------



10500	JOTBO	tr 231°	WOGAR	tr 147°	PRESN	GUNKS	JUNOL
			CAKIR				
CATEGORY	A	B	C	D			
LP MDA*	6180-1¼	891 (900-1¼)	6180-2½	891 (900-2½)			
LNVA MDA*	6920-1¼ 1631 (1600-1¼)	6920-1½ 1631 (1600-1½)	6920-3	1631 (1600-3)			