

WAAS CH 42638 W09A	APP CRS 093°	Rwy Idg 4201 TDZE 708 Apt Elev 708
--	------------------------	--

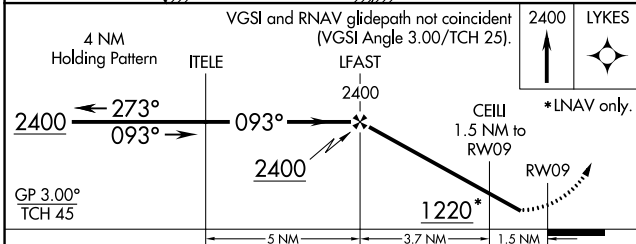
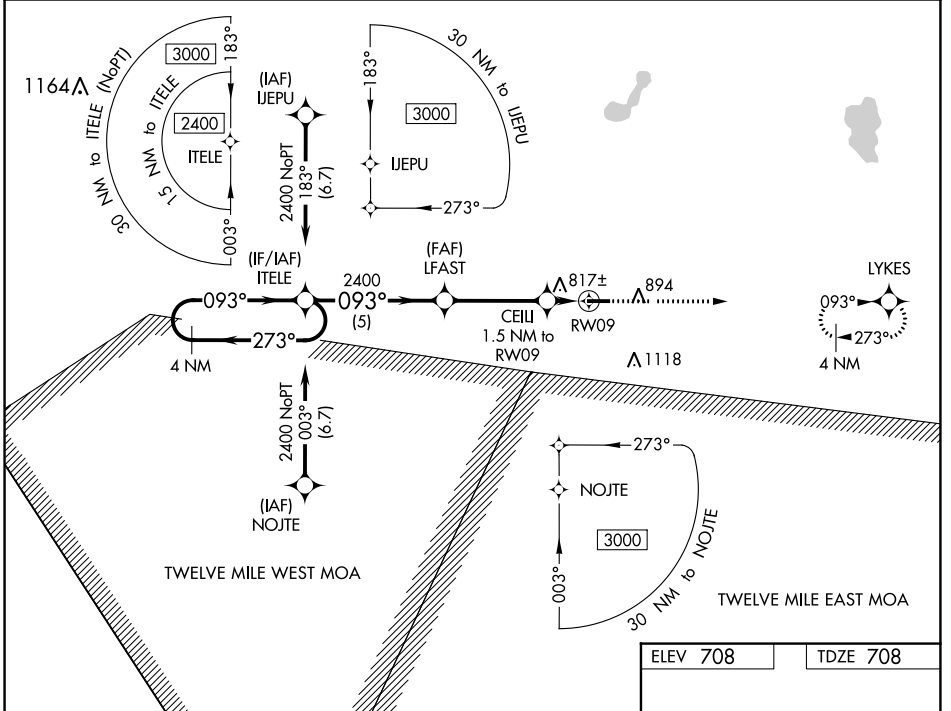
RNAV (GPS) RWY 9

ARENS FLD (RWN)

Baro-VNAV NA. Use Knox altimeter setting; when not received, use Rochester altimeter setting and increase all DA/MDA 20 feet and LNAV Cat C visibility 1/8 mile.
NA DME/DME RNP-0.3 NA. Helicopter visibility reduction below 3/4 SM NA.

MISSED APPROACH: Climb to 2400 direct LYKES and hold.

OXI AWOS-3 135.775	SOUTH BEND APP CON * 132.05 257.8	UNICOM 122.8 (CTAF)
------------------------------	---	-------------------------------



ELEV 708	TDZE 708
----------	----------

MIRL Rwy 9-27
REIL Rws 9 and 27

CATEGORY	A	B	C	D
LPV DA	995-1 287 (300-1)			NA
LNAV/VNAV DA	1132-1½ 424 (500-1½)			NA
LNAV MDA	1120-1 412 (500-1)		1120-1⅛ 412 (500-1⅛)	NA
C CIRCLING	1240-1 532 (600-1)		1480-2¼ 772 (800-2¼)	NA

EC-2, 18 MAY 2023 to 15 JUN 2023

EC-2, 18 MAY 2023 to 15 JUN 2023