

WAAS CH 50234 W23A	APP CRS 233°	Rwy Idg TDZE Apt Elev	5018 4482 4514
---------------------------------	------------------------	-----------------------------	---

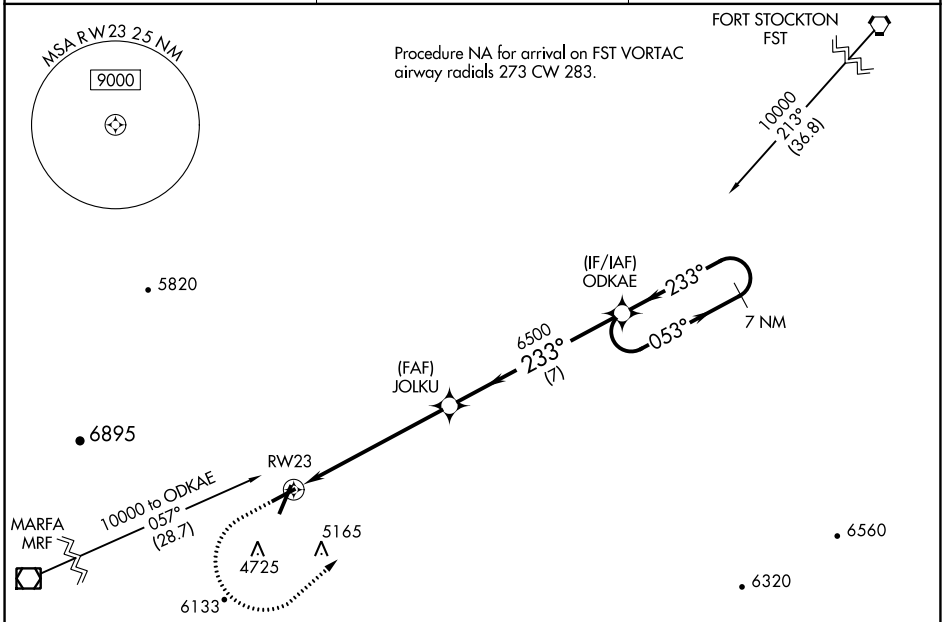
RNAV (GPS) RWY 23

ALPINE-CASPARIS MUNI (E38)

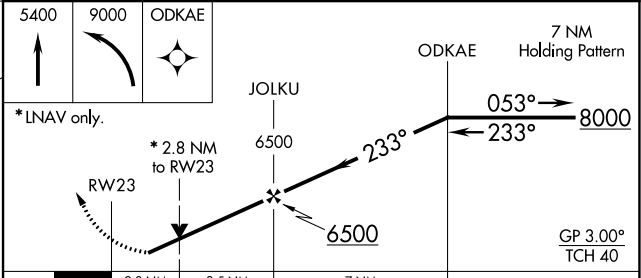
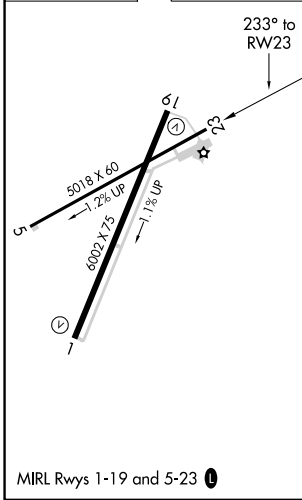
▼ For uncompensated Baro-VNAV systems, LNAV/VNAV NA below -23°C (-9°F) or above 54°C (130°F). Circling NA west of Rwy 1-19.
▲ Rwy 23 helicopter visibility reduction below ¼ SM NA.
 DME/DME RNP-0.3 NA.

MISSED APPROACH: (Do not exceed 165K until ODKAE)
 Climb to 5400 then climbing left turn to 9000 direct ODKAE and hold, continue climb-in-hold to 9000.

AWOS-3 119.025	ALBUQUERQUE CENTER 135.875 292.15	UNICOM 122.8 (CTAF) ①
--------------------------	---	---------------------------------



ELEV 4514	TDZE 4482
------------------	------------------



CATEGORY	A	B	C	D
LPV DA	4999-1 3/8		517 (500-1 3/8)	NA
LNAV/VNAV DA	5087-1 3/4		605 (600-1 3/4)	NA
LNAV MDA	5400-1 1/4	918 (900-1 1/4)	5400-2 1/2 918 (900-2 1/2)	NA
C CIRCLING	5400-1 1/4 886 (900-1 1/4)	5460-1 1/4 946 (1000-1 1/4)	5760-3 1246 (1300-3)	NA

SC-3, 18 MAY 2023 to 15 JUN 2023

SC-3, 18 MAY 2023 to 15 JUN 2023