

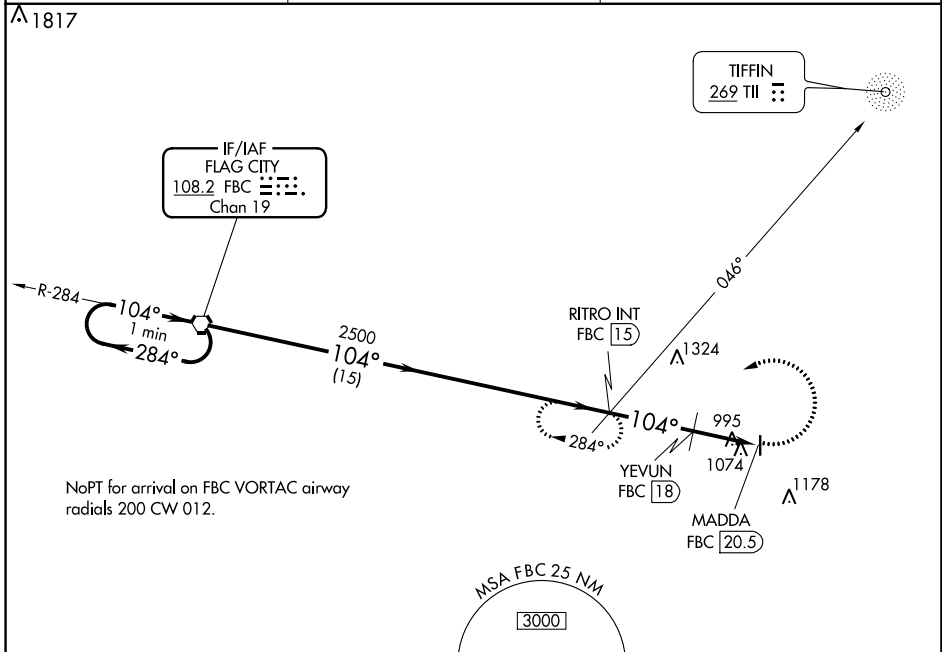
VORTAC FBC <b>108.2</b> Chan 19	APP CRS <b>104°</b>	Rwy Idg TDZE Apt Elev <b>N/A</b> <b>N/A</b> <b>830</b>
---------------------------------------	------------------------	---

**VOR-A**  
WYANDOT COUNTY (56D)

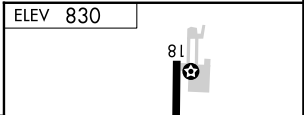
**NA** Procedure NA at night. When local altimeter setting not received, use Marion altimeter setting: increase all MDAs 40 feet and visibility Cot C/D ¼ SM.

MISSED APPROACH: Climbing left turn to 2500 on FBC VORTAC R-104 to RITRO INT/15 DME and hold.

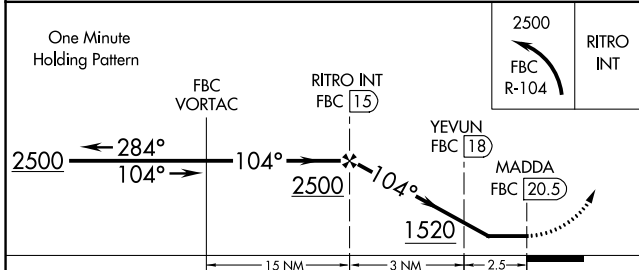
FDY ASOS <b>132.85</b>	CLEVELAND APP CON * <b>124.2 360.65</b>	UNICOM <b>123.05 (CTAF) 0</b>
---------------------------	--	----------------------------------



NoPT for arrival on FBC VORTAC airway radials 200 CW 012.



**ADF or DME REQUIRED**



CATEGORY	A	B	C	D
CIRCLING	1520-1 690 (700-1)	1520-1¼ 690 (700-1¼)	1540-2 710 (800-2)	1540-2¼ 710 (800-2¼)
YEVUN FIX MINIMUMS (DME REQUIRED)				
CIRCLING	1420-1 590 (600-1)	1440-1 610 (700-1)	1540-2 710 (800-2)	1540-2¼ 710 (800-2¼)

ELEV 830					
RITRO INT					
LURL Rwy 18-36 0					
FAF to MAP 5.5 NM					
Knots	60	90	120	150	180
Min:Sec	5:30	3:40	2:45	2:12	1:50

EC-2, 18 MAY 2023 to 15 JUN 2023

EC-2, 18 MAY 2023 to 15 JUN 2023