

WAAS CH 86917 W05A	APP CRS 049°	Rwy Idg TDZE Apt Elev	5105 24 26
--	------------------------	-----------------------------	---------------------------------------

RNAV (GPS) RWY 5

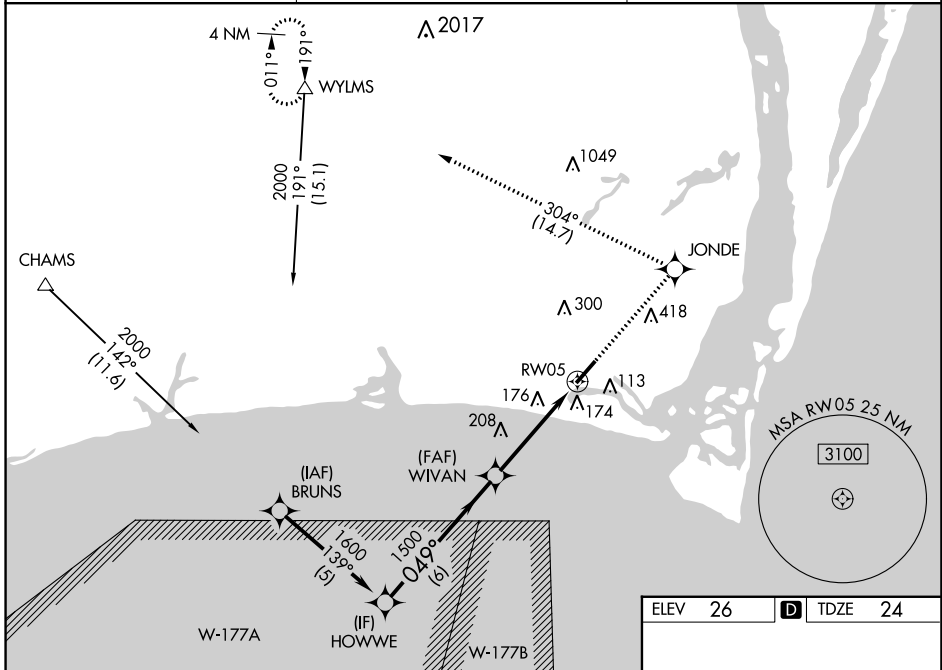
CAPE FEAR RGNL JETPORT/HOWIE FRANKLIN FLD (SUT)

RNP APCH - GPS.

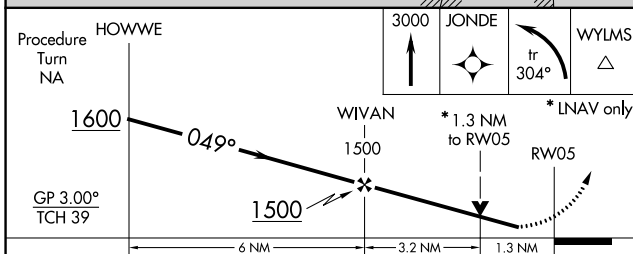
⚠ Baro-VNAV NA when using Wilmington altimeter setting. For uncompensated Baro-VNAV systems, LNAV/VNAV NA below -15°C or above 54°C. Rwy 5 helicopter visibility reduction below 3/4 SM NA. When local altimeter setting not received, use Wilmington altimeter setting and increase LPV DA to 325 feet, increase LNAV/VNAV DA to 511 feet, increase all MDAs 60 feet and LNAV visibility Cat C 1/8 SM, and Circling visibility Cat C 1/4 SM. VDP NA when using Wilmington altimeter setting.

⚠ MISSED APPROACH: Climb to 3000 direct JONDE and left turn on track 304° to WYLSM and hold.

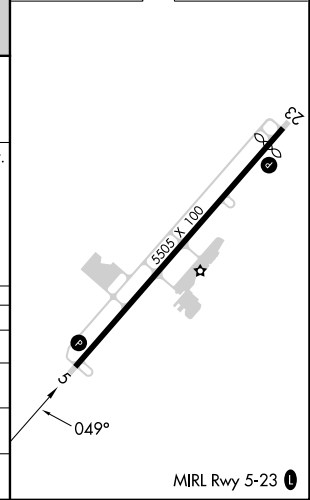
AWOS-3P 124.175	WILMINGTON APP CON * 118.25 284.65	UNICOM 123.05 (CTAF) 0
---------------------------	--	----------------------------------



ELEV 26	D TDZE 24
---------	------------------



CATEGORY	A	B	C	D
LPV DA	274-1	250 (300-1)		NA
LNAV/VNAV DA	460-1 1/2	436 (500-1 1/2)		NA
LNAV MDA	460-1	436 (500-1)	460-1 1/4 436 (500-1 1/4)	NA
CIRCLING	480-1 454 (500-1)	520-1 494 (500-1)	720-2 694 (700-2)	NA



RNAV (GPS) RWY 5

SE-2, 18 MAY 2023 to 15 JUN 2023

SE-2, 18 MAY 2023 to 15 JUN 2023