

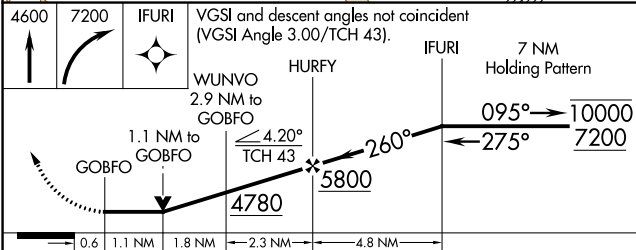
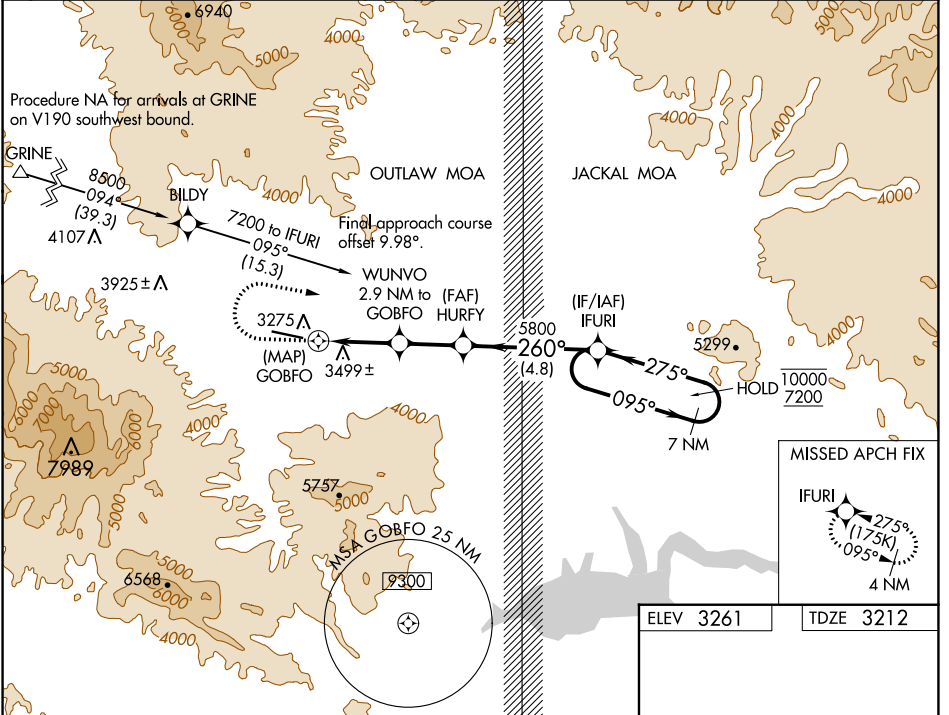
APP CRS	Rwy Idg	<b>6500</b>
<b>260°</b>	TDZE	<b>3212</b>
	Apt Elev	<b>3261</b>

# RNAV (GPS) RWY 27

SAN CARLOS APACHE (P13)

RNP APCH.	MISSED APPROACH: (Do not exceed 175K until IFURI) Climb to 4600 then climbing right turn to 7200 direct IFURI and hold, do not exceed 230K when continuing climb-in-hold to 7200.
<p><b>▼</b> Rwy 27 helicopter visibility reduction below 3/4 SM NA.</p> <p><b>▲NA</b> VDP NA when using San Manuel altimeter setting. When local altimeter setting not received, use San Manuel altimeter setting and increase all MDA 120 feet.</p>	<p>*Missed approach requires minimum climb of 290 feet per NM to 5340.</p>

AWOS-3 <b>120.075</b>	ALBUQUERQUE CENTER <b>125.4 269.3</b>	UNICOM <b>122.8 (CTAF) 0</b>
--------------------------	--	---------------------------------



CATEGORY	A	B	C	D
LNAV MDA*	3760-1	548 (500-1)		NA
LNAV MDA	4180-1¼ 968 (1000-1¼)	4180-1½ 968 (1000-1½)		NA
CIRCLING	4180-1¼ 919 (1000-1¼)	4180-1½ 919 (1000-1½)		NA

ELEV 3261 TDZE 3212

MIRL Rwy 9-27 0

REIL Rws 9 and 27

SW-4, 18 MAY 2023 to 15 JUN 2023

SW-4, 18 MAY 2023 to 15 JUN 2023