


WAAS CH 49202 W36A	APP CRS 359°	Rwy Idg TDZE Apt Elev	7002 589 589
---------------------------------	------------------------	-----------------------------	---

RNAV (GPS) RWY 36

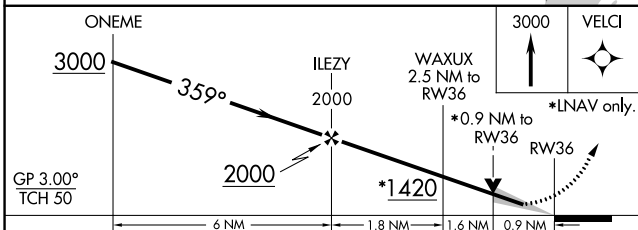
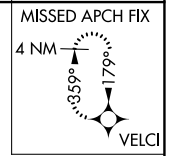
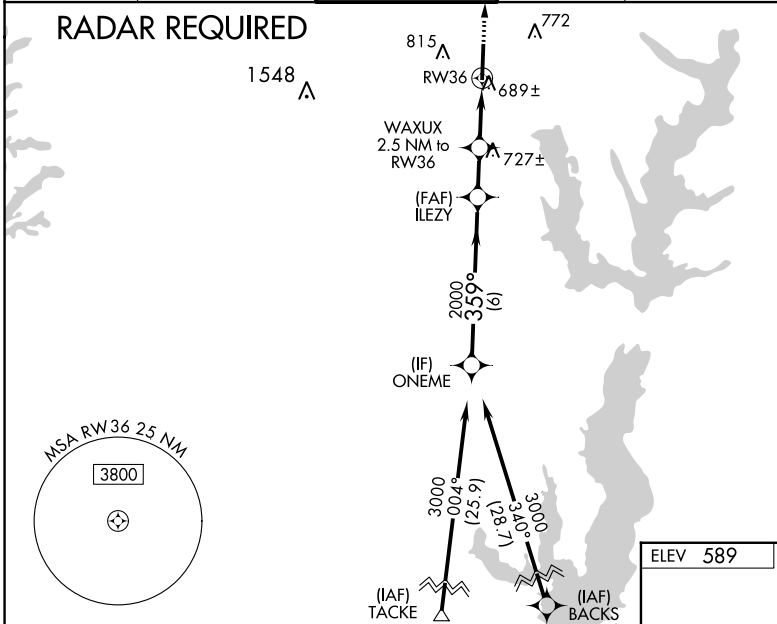
MCKINNEY NTL (TKI)

⚠ For uncompensated Baro-VNAV systems, LNAV/VNAV NA below -8°C (18°F) or above 54°C (130°F). When local altimeter setting not received, use Dallas Love Fld altimeter setting and increase all DA 70 feet and all MDA 80 feet, and increase LNAV/VNAV all Cats visibility 1/8 mile, LNAV Cat C/D and Circling Cat C/D visibility 1/4 mile. DME/DME RNP-0.3 NA. VDP and Baro-VNAV NA when using Dallas Love Fld altimeter setting. For inop MALS increase LNAV/VNAV all Cats visibility to 3/8 mile and LNAV Cat D visibility to 1 mile. For inop MALS when using Dallas Love Fld altimeter setting increase LPV all Cats visibility to 3/8 mile, LNAV/VNAV Cat D visibility to 1 1/8 mile, and LNAV Cat D visibility to 1 1/4 mile. Inop table does not apply to LPV all Cats.

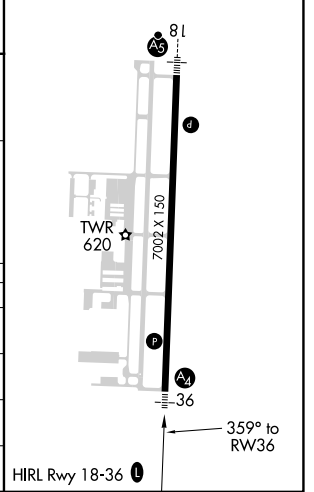
MALS
 =

MISSED APPROACH:
Climb to 3000 direct VELCI and hold.

ATIS 119.925	REGIONAL APP CON 124.3 282.275	MCKINNEY TOWER ★ 118.825 (CTAF) 	GND CON 121.875	CLNC DEL 121.35 (When twr closed)	UNICOM 122.95
------------------------	--	--	---------------------------	--	-------------------------



ELEV 589	TDZE 589
----------	----------



CATEGORY	A	B	C	D
LPV DA		789-3/4	200 (200-3/4)	
LNAV/VNAV DA		850-3/4	261 (300-3/4)	
LNAV MDA		940-3/4	351 (400-3/4)	
C CIRCLING	1120-1	531 (600-1)	1200-1 1/4 611 (700-1 1/4)	1380-2 1/2 791 (800-2 1/2)

SC-2, 18 MAY 2023 to 15 JUN 2023

SC-2, 18 MAY 2023 to 15 JUN 2023