

WAAS CH 53427 W18A	APP CRS 179°	Rwy Idg TDZE Apt Elev	5500 970 979
--	------------------------	-----------------------------	---

RNAV (GPS) RWY 18

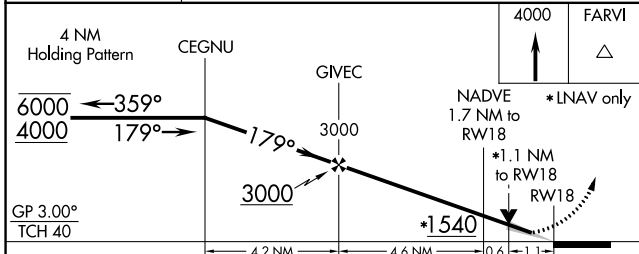
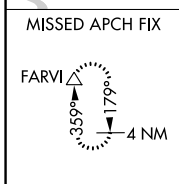
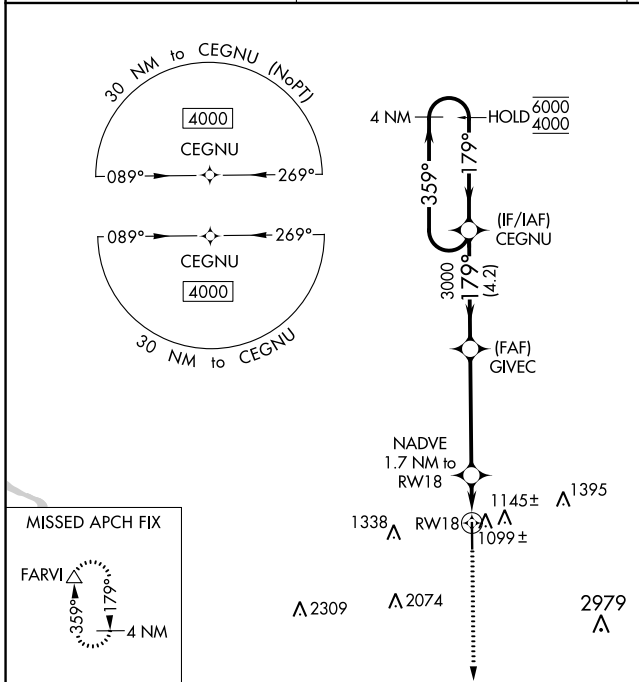
JAMES H CONNELL FLD AT INDEPENDENCE MUNI (IIB)

RNP APCH.

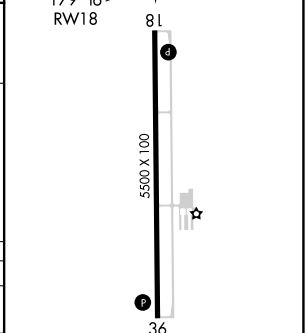
▽ For uncompensated Baro-VNAV systems, LNAV/VNAV NA
▲ below -16°C or above 54°C.

MISSED APPROACH: Climb to 4000 direct FARVI and hold, continue climb-in-hold to 4000.

AWOS-3 120.825	WATERLOO APP CON ★ 118.9 251.15	UNICOM 122.8 (CTAF) 0
--------------------------	---	--



ELEV 979	TDZE 970
----------	----------



CATEGORY	A	B	C	D
LPV DA		1220-3/4	250 (300-3/4)	
LNAV/VNAV DA		1280-7/8	310 (400-7/8)	
LNAV MDA	1360-1	390 (400-1)	1360-1 1/8	390 (400-1 1/8)
C CIRCLING	1500-1	521 (600-1)	1700-2 721 (800-2)	2440-3 1461 (1500-3)

MIRL Rwy 18-36 **0**
REIL Rwys 18 and 36 **0**

NC-3, 18 MAY 2023 to 15 JUN 2023

NC-3, 18 MAY 2023 to 15 JUN 2023

RNAV (GPS) RWY 18