

WAAS CH <b>90341</b> <b>W36A</b>	APP CRS <b>359°</b>	Rwy Idg TDZE Apt Elev	<b>5500</b> <b>979</b> <b>979</b>
--	------------------------	-----------------------------	---

# RNAV (GPS) RWY 36

JAMES H CONNELL FLD AT INDEPENDENCE MUNI (IIB)

RNP APCH.

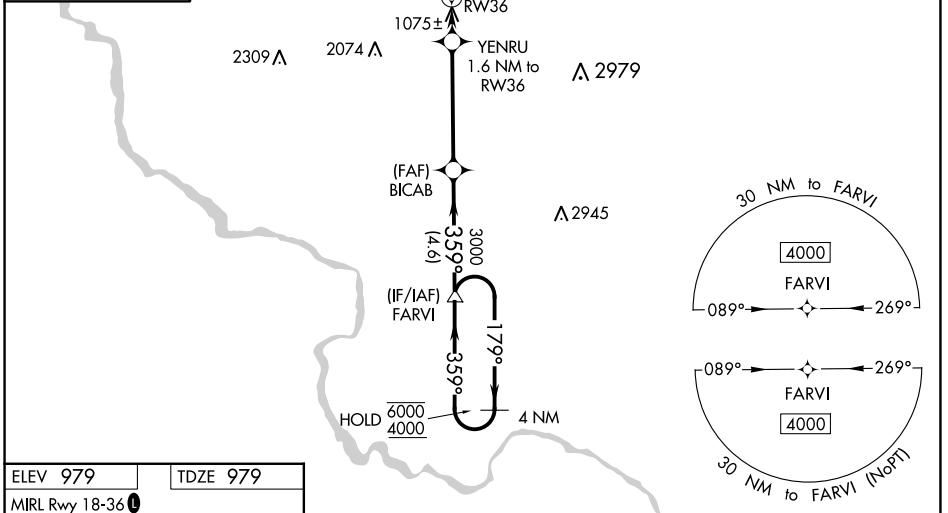
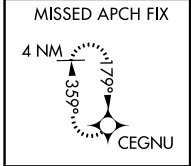
**▼**  
**▲** For uncompensated Baro-VNAV systems, LNAV/VNAV NA below -16°C or above 54°C.

MISSED APPROACH: Climb to 4000 direct CEGNU and hold, continue climb-in-hold to 4000.

AWOS-3  
**120.825**

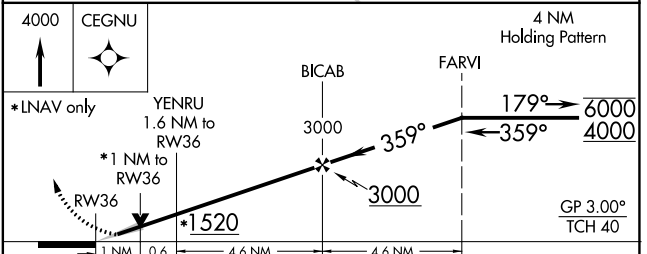
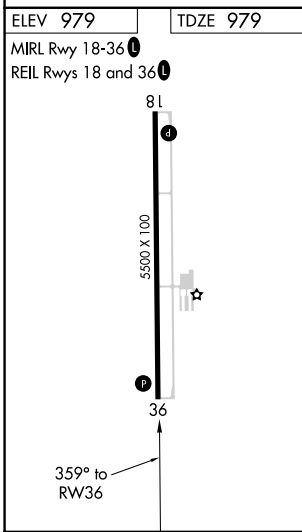
WATERLOO APP CON ★  
**118.9 251.15**

UNICOM  
**122.8 (CTAF) 0**



NC-3, 18 MAY 2023 to 15 JUN 2023

NC-3, 18 MAY 2023 to 15 JUN 2023



CATEGORY	A	B	C	D
LPV DA		1229- <sup>3</sup> / <sub>4</sub>	250 (300- <sup>3</sup> / <sub>4</sub> )	
LNAV/VNAV DA		1236- <sup>7</sup> / <sub>8</sub>	257 (300- <sup>7</sup> / <sub>8</sub> )	
LNAV MDA		1340-1	361 (400-1)	
<b>C</b> CIRCLING	1500-1	521 (600-1)	1700-2 721 (800-2)	2440-3 1461 (1500-3)

# RNAV (GPS) RWY 36