

APP CRS	Rwy Idg	<b>3201</b>
<b>052°</b>	TDZE	<b>84</b>
	Apt Elev	<b>85</b>

# RNAV (GPS) RWY 5

ST GEORGE (6J2)

**▼** DME/DME RNP-0.3 NA. Helicopter visibility reduction below 1 SM NA. Use Summerville altimeter setting; when not received, use Charleston altimeter setting and increase all MDAs 40 feet, increase LNAV and Circling Cat C visibility ¼ mile, increase LNAV and Circling Cat D visibility ½ mile. Procedure NA at night.

**▲** NA

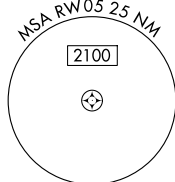
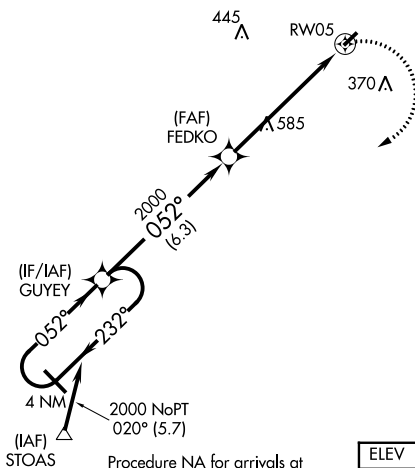
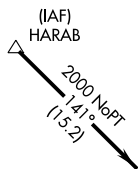
MISSED APPROACH: Climbing right turn to 2000 direct GUYEY and hold.

CHARLESTON APP CON  
**120.7 306.925**

UNICOM  
**122.8 (CTAF)**

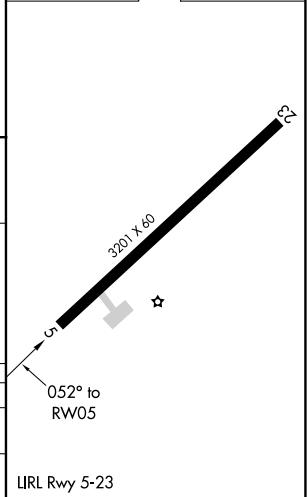
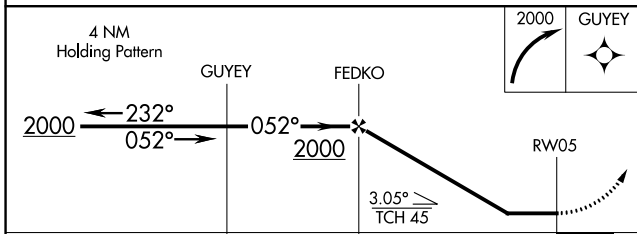
**▲ 648**

Procedure NA for arrivals at HARAB on V18 Northwest bound.



Procedure NA for arrivals at STOAS on V3 Southbound.

ELEV	<b>85</b>	TDZE	<b>84</b>
------	-----------	------	-----------



CATEGORY	A	B	C	D
LNAV MDA	940-1¼ 856 (900-1¼)	940-2½ 856 (900-2½)	940-2¾ 856 (900-2¾)	940-2¾ 856 (900-2¾)
CIRCLING	940-1¼ 855 (900-1¼)	940-2½ 855 (900-2½)	940-2¾ 855 (900-2¾)	940-2¾ 855 (900-2¾)

SE-2, 18 MAY 2023 to 15 JUN 2023

SE-2, 18 MAY 2023 to 15 JUN 2023