

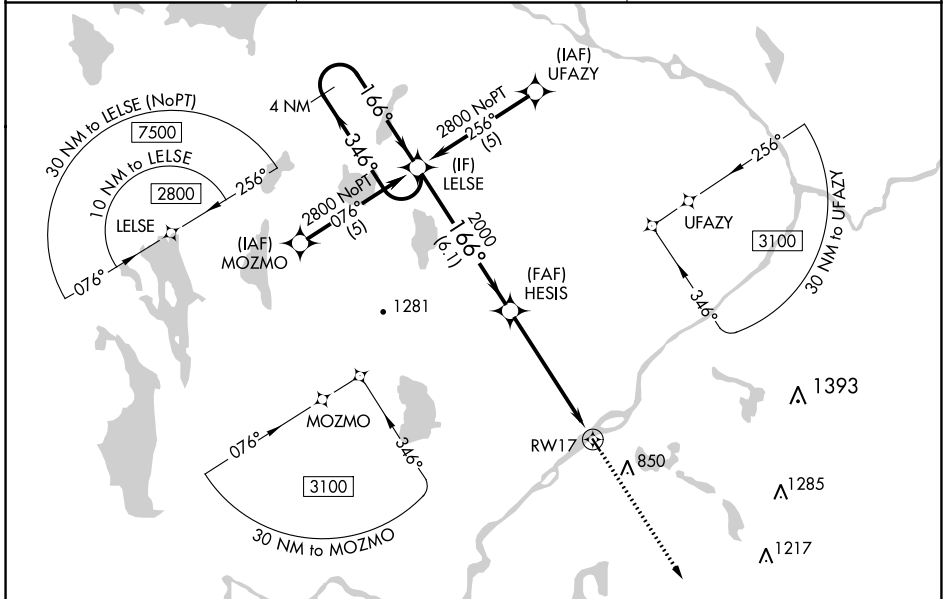
APP CRS	Rwy Idg	<b>2804</b>
<b>166°</b>	TDZE	<b>208</b>
	Apt Elev	<b>208</b>

# RNAV (GPS) RWY 17

LINCOLN RGNL (L.R.G)

RNP APCH.	Use Millinocket Muni altimeter setting, when not received use Bangor altimeter setting and increase all MDA 20 feet. Procedure NA at night. Rwy 17 helicopter visibility reduction below 1 SM NA.	MISSED APPROACH: Climb to 3100 direct LADNE and hold.
-----------	--	---

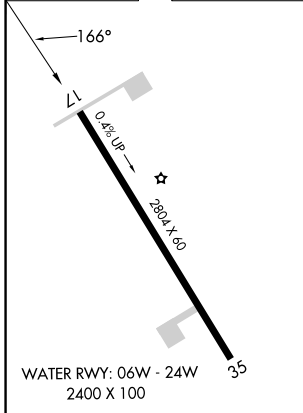
MLT ASOS <b>135.225</b>	BOSTON CENTER <b>124.25 290.5</b>	UNICOM <b>122.8 (CTAF) 0</b>
----------------------------	--------------------------------------	---------------------------------



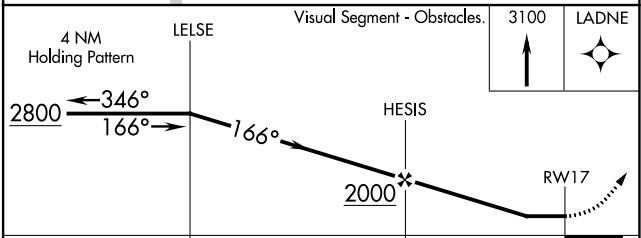
NE-1, 18 MAY 2023 to 15 JUN 2023

NE-1, 18 MAY 2023 to 15 JUN 2023

ELEV 208	TDZE 208
----------	----------



MIRL Rwy 17-35 **0**  
REIL Rws 17 and 35 **0**



CATEGORY	A	B	C	D
RNAV MDA	980-1 772 (800-1)	980-1¼ 772 (800-1¼)	NA	