

WAAS CH 45736 W35A	APP CRS 346°	Rwy Idg TDZE Apt Elev	2804 208 208
--	------------------------	-----------------------------	---

RNAV (GPS) RWY 35

LINCOLN RGNL (L.R.G)

RNP APCH.

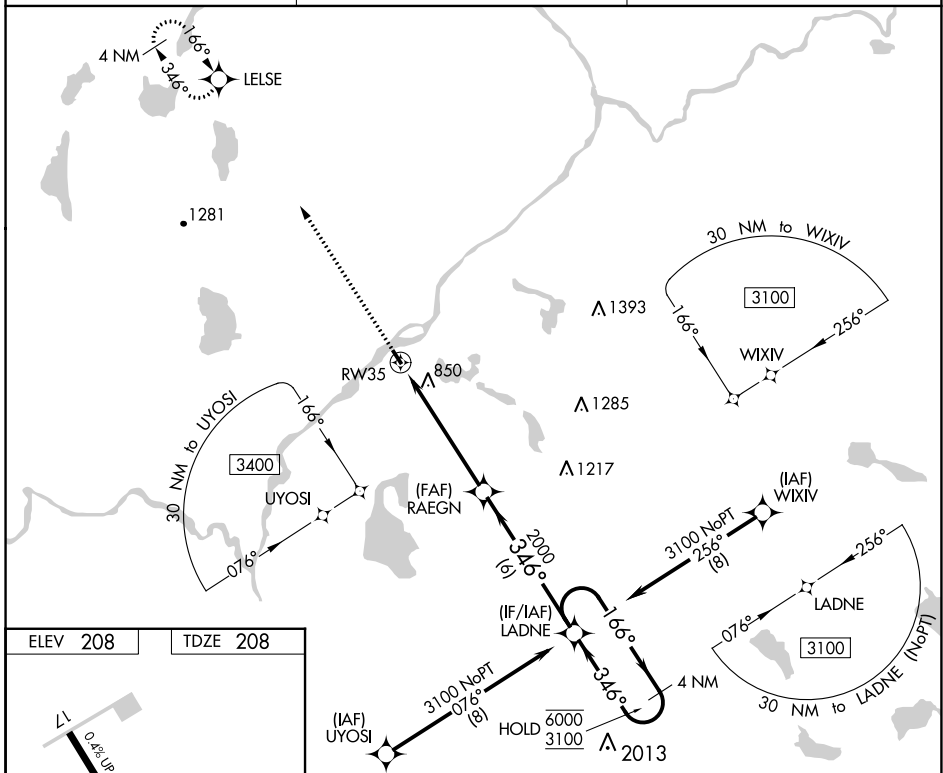
▼ Procedure NA at night. Use Millinocket altimeter setting; when
 ▲ NA not received, use Bangor Intl altimeter setting and increase all
 ☳ -31°C MDA 20 feet. Helicopter visibility reduction below 1 SM NA.

MISSED APPROACH:
 Climb to 2800 direct
 LELSE and hold.

MLT ASOS
135.225

BOSTON CENTER
124.25 290.5

UNICOM
122.8 (CTAF) 0



NE-1, 18 MAY 2023 to 15 JUN 2023

NE-1, 18 MAY 2023 to 15 JUN 2023

ELEV 208	TDZE 208
----------	----------

WATER RWY: 06W - 24W
 2400 X 100

MIRL Rwy 17-35
 REIL Rwy 17 and 35

2800	LELSE	Visual Segment - Obstacles.	LADNE	4 NM Holding Pattern
↑	✧			
		RAEGN		
		RW35		
		2000		
		5.5 NM	6 NM	
				166° → 6000
				← 346° 3100
CATEGORY	A	B	C	D
LP MDA	1120-1¼	912 (1000-1¼)		NA
LNAV MDA	1200-1¼ 992 (1000-1¼)	1200-1½ 992 (1000-1½)		NA
CIRCLING	1240-1¼ 1032 (1100-1¼)	1240-1½ 1032 (1100-1½)		NA