

COLUMBUS, OHIO

AL-6846 (FAA)

23054

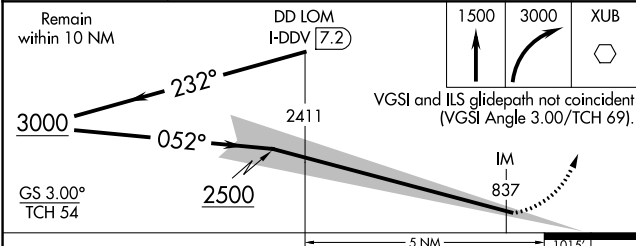
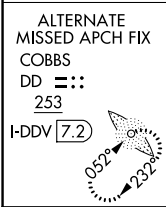
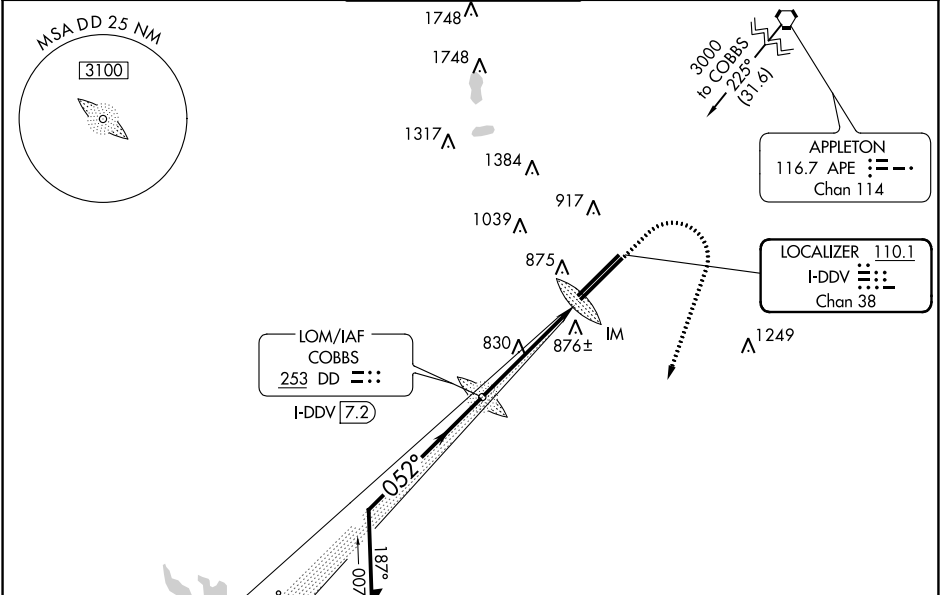
LOC/DME I-DDV <b>110.1</b> Chan <b>38</b>	APP CRS <b>052°</b>	Rwy Idg <b>12103</b> TDZE <b>736</b> Apt Elev <b>744</b>
---	------------------------	--

# ILS RWY 5R (CAT II)

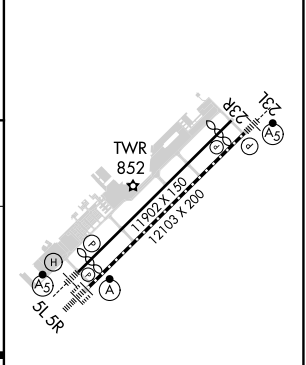
RICKENBACKER INTL (LCK)

ADF or DME required. <b>NA</b>	ALSIF-2 	MISSED APPROACH: Climb to 1500 then climbing right turn to 3000 direct XUB VOR and hold.
-----------------------------------	-------------	--

ATIS <b>132.75</b>	COLUMBUS APP CON <b>134.0 279.6</b>	RICK TOWER <b>120.05 348.4</b>	GND CON <b>125.275 275.8</b>	CLNC DEL <b>125.275 275.8</b>
-----------------------	--	-----------------------------------	---------------------------------	----------------------------------



ELEV 744	<b>D</b> TDZE 736
----------	-------------------



CATEGORY	A	B	C	D
S-ILS 5R		RA 100/12	100 DA 836	

**CATEGORY II ILS - SPECIAL AIRCREW & AIRCRAFT CERTIFICATION REQUIRED**

TDZ/CL Rwy 5R
REIL Rwy 23R
HIRL Rwys 5L-23R and 5R-23L

COLUMBUS, OHIO  
Amdt 3E 09SEP21

39°49'N-82°56'W

# RICKENBACKER INTL (LCK)

## ILS RWY 5R (CAT II)

EC-2, 18 MAY 2023 to 15 JUN 2023

EC-2, 18 MAY 2023 to 15 JUN 2023