

NCLUS THREE DEPARTURE

ATIS
132.75
CLNC DEL
125.275 275.8
GND CON
125.275 275.8
COLUMBUS DEP CON
134.0 279.6
RICK TOWER
120.05 348.4

RADAR required.

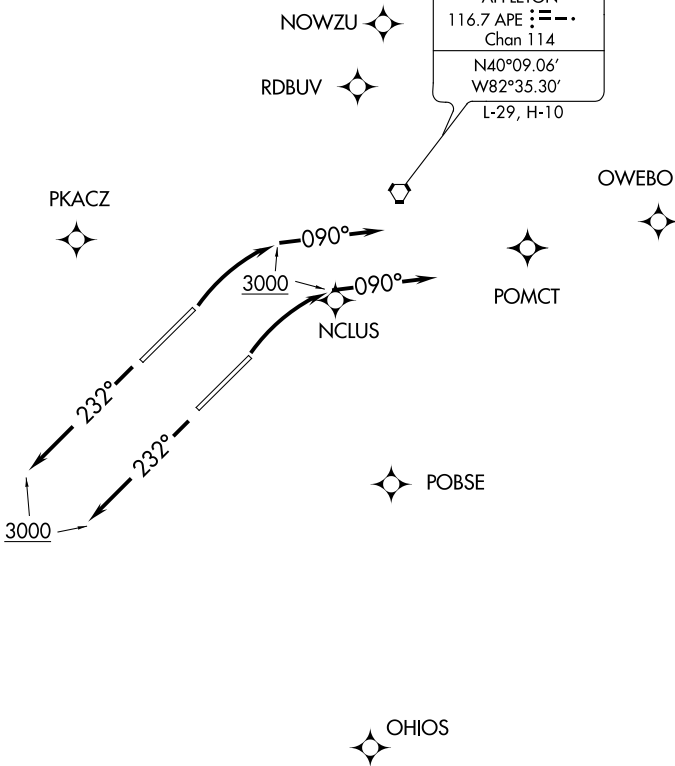
**TOP ALTITUDE:
3000**

ROSEWOOD
117.5 ROD
Chan 122
N40°17.27'
W84°02.59'
L-27, H-10

APPLETON
116.7 APE
Chan 114
N40°09.06'
W82°35.30'
L-29, H-10

TARRY
N40°03.26'
W83°54.85'
L-27, H-10

DAYTON
114.5 DGN
Chan 92
N40°00.99'-W84°23.81'
L-27, H-10



TAKEOFF MINIMUMS:

Rwy 5L/R: Standard.

Rwy 23L/R: Standard with a minimum climb of 230' per NM to 3000.

NOTE: Chart not to scale.

DEPARTURE ROUTE DESCRIPTION

TAKEOFF RUNWAYS 5L/R: Climbing right turn to 3000 on heading 090° thence....

TAKEOFF RUNWAYS 23L/R: Climb on heading 232° to 3000 thence....

....Expect radar vectors to first enroute fix. Expect clearance to requested altitude/flight level 10 minutes after departure.

EC-2, 18 MAY 2023 to 15 JUN 2023

EC-2, 18 MAY 2023 to 15 JUN 2023