

WALNUT COVE, NORTH CAROLINA

AL-6882 (FAA)

21252

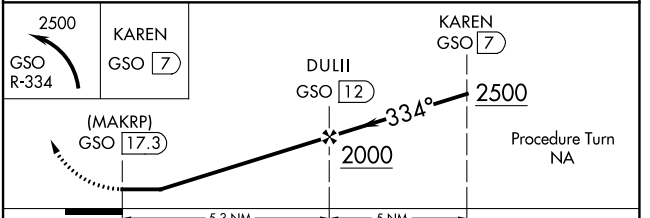
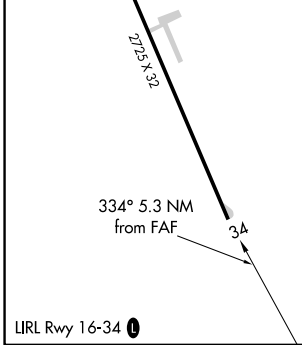
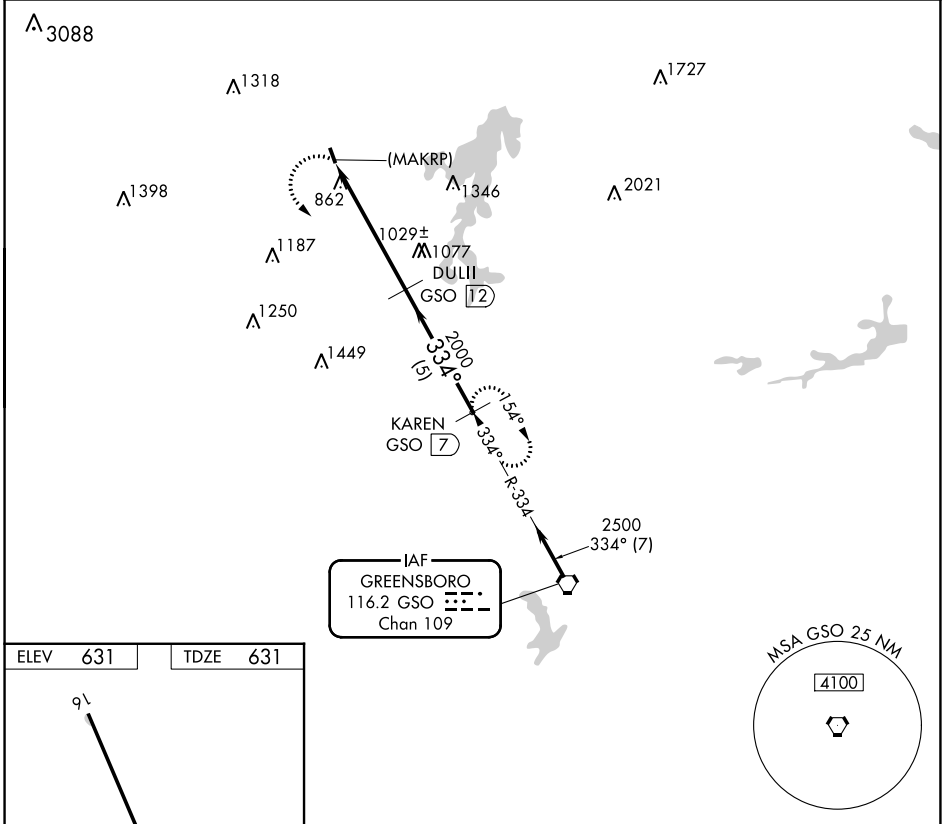
| | | | |
|------------|---------|--------------|------|
| VORTAC GSO | APP CRS | Rwy ldg TDZE | 2725 |
| 116.2 | 334° | 631 | |
| Chan 109 | | Apt Elev | 631 |

VOR/DME or GPS RWY 34

MEADOW BROOK FLD (N63)

NA Use Reidsville altimeter setting. Procedure NA at night. MISSED APPROACH: Climbing left turn to 2500 via GSO R-334 to KAREN GSO 7 DME and hold.

| | | |
|------------------------------|---|---------------------------------|
| SIF AWOS-3 119.775 | GREENSBORO APP CON 124.35 269.225 | UNICOM 123.0 (CTAF) 0 |
|------------------------------|---|---------------------------------|



| CATEGORY | A | B | C | D |
|----------|-----------------------|-------------------------|---|----|
| S-34 | 1400-1 769 (800-1) | 1400-1¼ 769 (800-1¼) | | NA |
| CIRCLING | 1400-1 769 (800-1) | 1440-1¼ 809 (900-1¼) | | NA |

WALNUT COVE, NORTH CAROLINA
Orig-A 09SEP21

36°18'N-80°09'W

VOR/DME or GPS RWY 34

MEADOW BROOK FLD (N63)

SE-2, 18 MAY 2023 to 15 JUN 2023

SE-2, 18 MAY 2023 to 15 JUN 2023