

WAAS CH 70436 W03A	APP CRS 038°	Rwy Idg TDZE Apt Elev	6001 3976 3979
--	------------------------	-----------------------------	---

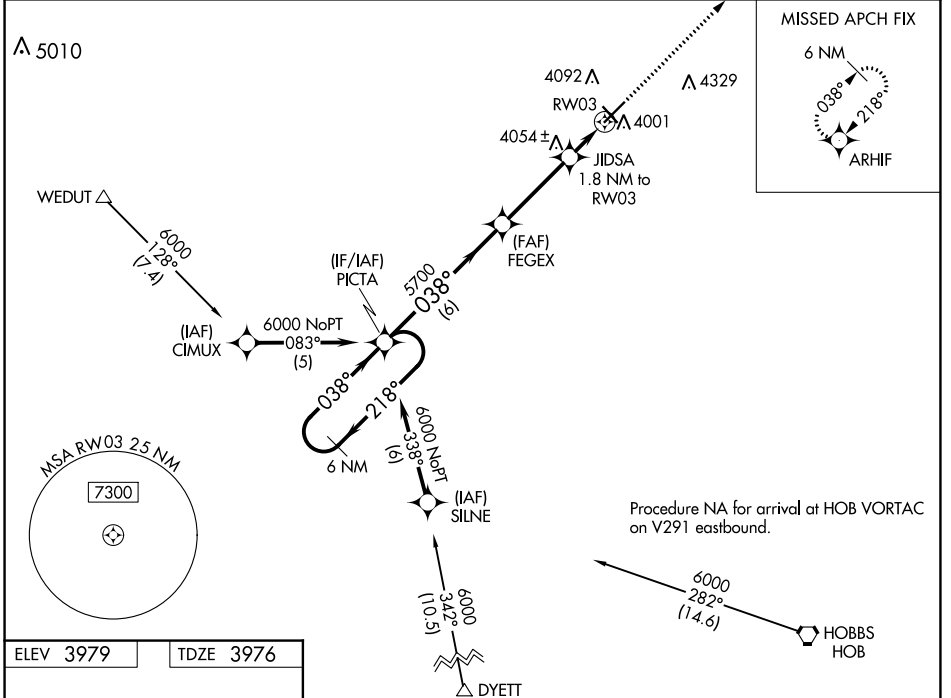
RNAV (GPS) RWY 3

LEA COUNTY/ZIP FRANKLIN MEML (E06)

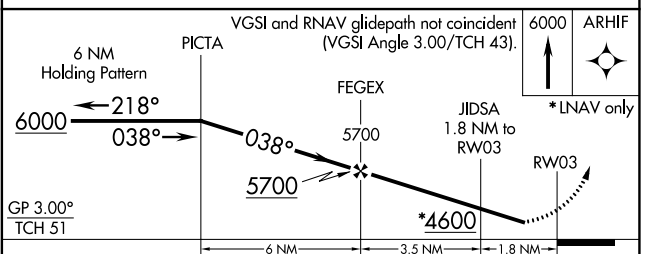
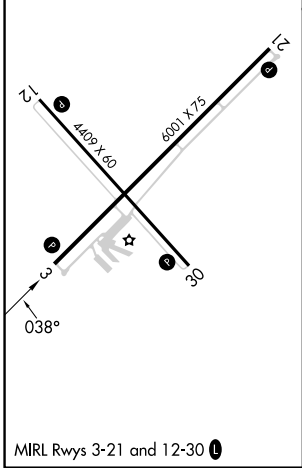
Baro-VNAV NA. DME/DME RNP-0.3 NA. Use Hobbs altimeter setting; when not received, procedure NA. Helicopter visibility reduction below 1 SM NA. Night landing: Rwy 3, 12, 30 NA.

MISSED APPROACH: Climb to 6000 direct ARHIF and hold.

FORT WORTH CENTER 133.1 298.95 **UNICOM 122.8 (CTAF) 0**



ELEV 3979	TDZE 3976
-----------	-----------



CATEGORY	A	B	C	D
LPV DA	4314-1½	338 (400-1½)		NA
LNNAV/VNAV DA	4314-1½	338 (400-1½)		NA
LNNAV MDA	4400-1	424 (500-1)	4400-1¼ 424 (500-1¼)	NA
C CIRCLING	4480-1	501 (600-1)	4720-2¼ 741 (800-2¼)	NA

SW-1, 18 MAY 2023 to 15 JUN 2023

SW-1, 18 MAY 2023 to 15 JUN 2023