

WAAS CH <b>40436</b> <b>W35A</b>	APP CRS <b>354°</b>	Rwy Idg TDZE Apt Elev	<b>3406</b> <b>1435</b> <b>1437</b>
--	------------------------	-----------------------------	---

# RNAV (GPS) RWY 35

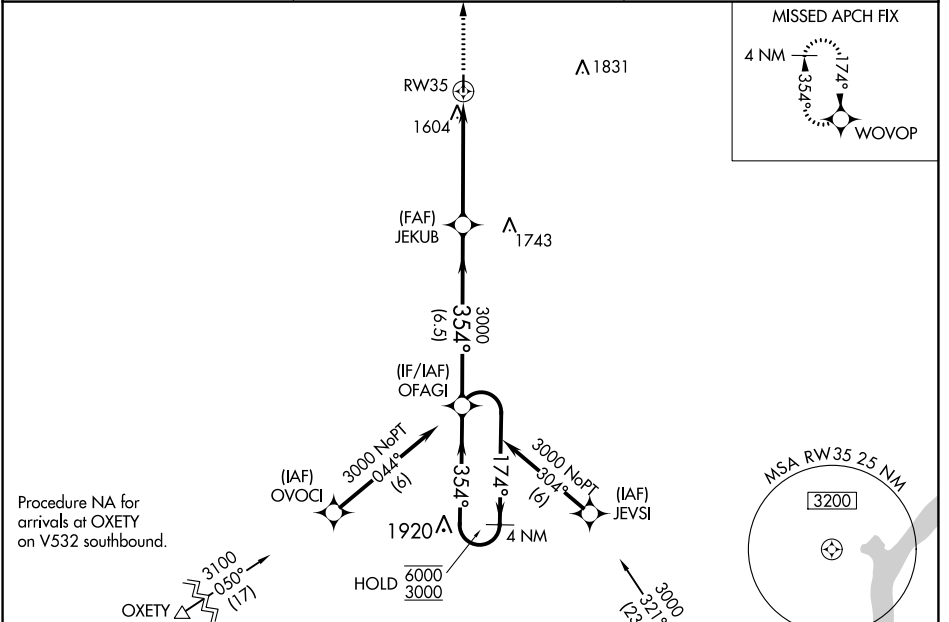
WASHINGTON COUNTY VETERAN'S MEML (K38)

RNP APCH - GPS.

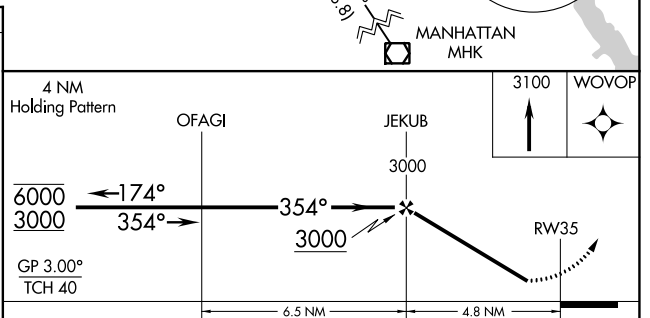
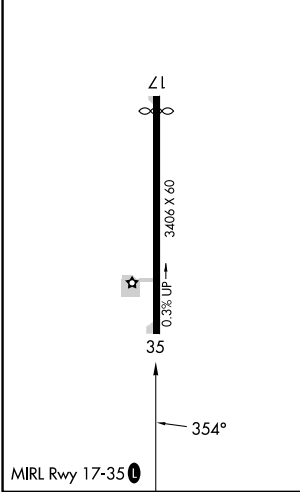
**⚠️ NA** Circling Rwy 17 NA at night.  
Rwy 35 helicopter visibility reduction below ¾ SM NA.  
Baro-VNAV NA. Use Concordia altimeter setting.

MISSED APPROACH: Climb to 3100 direct WOVOP and hold.

CNK ASOS <b>123.825</b>	KANSAS CITY CENTER <b>127.35 257.975</b>	CTAF <b>122.9</b>
----------------------------	---	----------------------



ELEV <b>1437</b>	TDZE <b>1435</b>
------------------	------------------



CATEGORY	A	B	C	D
LPV DA	1762-1		327 (400-1)	NA
LNAV/VNAV DA	1827-1½		392 (400-1½)	NA
LNAV MDA	2020-1	585 (600-1)	2020-1¾ 585 (600-1¾)	NA
<b>C</b> CIRCLING	2020-1	583 (600-1)	2020-1¾ 583 (600-1¾)	NA

NC-2, 18 MAY 2023 to 15 JUN 2023

NC-2, 18 MAY 2023 to 15 JUN 2023