

WAAS CH 99740 W19A	APP CRS 187°	Rwy Idg TDZE Apt Elev	6200 1303 1303
---------------------------------	------------------------	-----------------------------	---

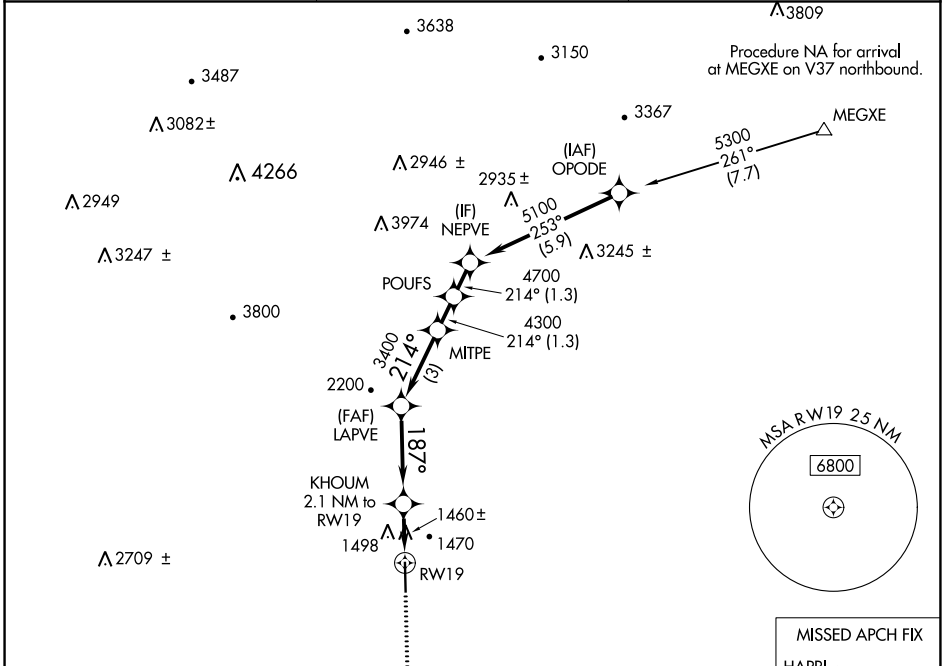
RNAV (GPS) RWY 19

WILKES COUNTY (UKF)

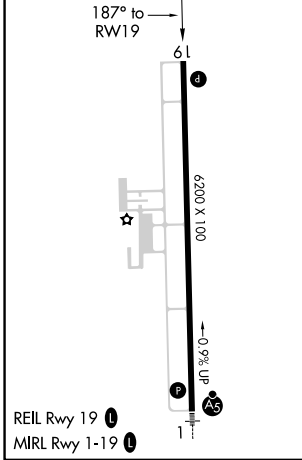
▼ DME/DME RNP-0.3 NA. VDP NA when using Hickory altimeter setting. When local altimeter setting not received, use Hickory altimeter setting and increase all MDAs 100 feet and LP and LNAV visibility Cats C/D ¼ SM and increase Circling visibility Cat C ½ SM. Rwy 19 helicopter visibility reduction below ¾ SM NA.

MISSED APPROACH: Climb to 5000 direct HAPRI and hold, continue climb-in-hold to 5000.

AWOS-3 126.625	ATLANTA CENTER 125.15 263.0	UNICOM 122.7 (CTAF) 0
--------------------------	---------------------------------------	---------------------------------



ELEV 1303	TDZE 1303
------------------	------------------



5000 HAPRI	VGSI and descent angles not coincident (VGSI Angle 3.00/TCH 47).	NEPVE	POUFS	MITPE	LAPVE	KHOUM
↑		5100	4700	4300	3400	2100
	1.2 NM to RWY 19	≤ 3.45° TCH 47	214°	187°	187°	187°
	1.2	0.9	3.5 NM	3 NM	1.3 NM	1.3 NM
CATEGORY	A	B	C	D		
LP MDA	1720-1	417 (500-1)	1720-1½	417 (500-1½)		
LNAV MDA	1760-1	457 (500-1)	1760-1¾	457 (500-1¾)		
C CIRCLING	1800-1 497 (500-1)	1880-1 577 (600-1)	1880-1½ 577 (600-1½)	2240-3 937 (1000-3)		

SE-2, 18 MAY 2023 to 15 JUN 2023

SE-2, 18 MAY 2023 to 15 JUN 2023