



**TOP ALTITUDE:  
ASSIGNED BY ATC**

AWOS-3PT  
118.125  
MILWAUKEE DEP CON  
125.35 307.0

**TAKEOFF MINIMUMS**

Rwys 18, 36: NA - Environmental.  
Rwys 8, 26: Standard.

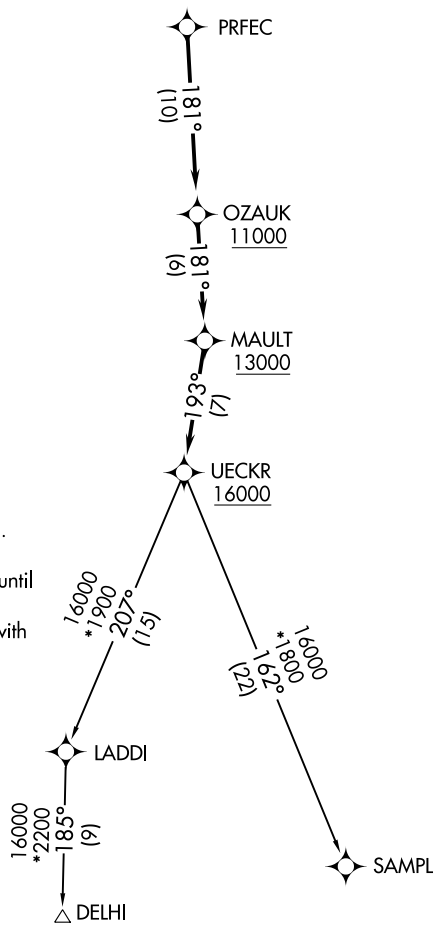
NOTE: RNAV 1.

NOTE: GPS or DME/DME/IRU required.

NOTE: RADAR required.

NOTE: Turbojet aircraft maintain 250K until advised by ATC.

NOTE: Notify ATC if unable to comply with crossing restrictions.



NOTE: Chart not to scale.

**DEPARTURE ROUTE DESCRIPTION**

Climb on assigned heading for RADAR vectors to PRFEC, thence...

...on track 181° to cross OZAUK at or above 11000, then on track 181° to cross MAULT at or above 13000, then on track 193° to cross UECKR at or above 16000, then on (transition). Maintain ATC assigned altitude, expect filed altitude ten minutes after departure.

DELHI TRANSITION (UECKR6.DELHI)

SAMPL TRANSITION (UECKR6.SAMPL)