

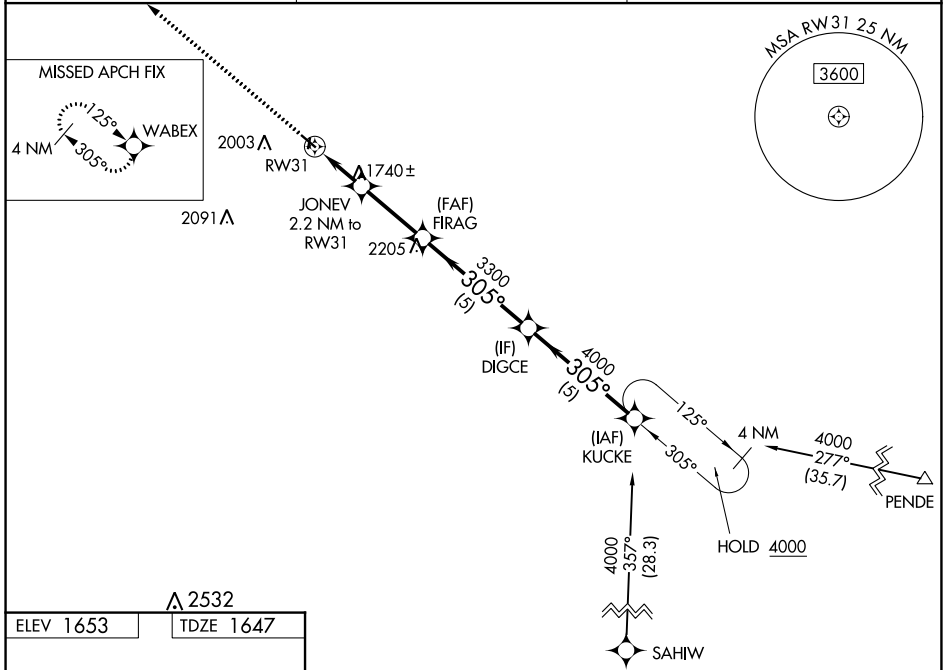
WAAS CH <b>45821</b> <b>W31A</b>	APP CRS <b>305°</b>	Rwy Idg TDZE <b>1647</b> Apt Elev <b>1653</b>	<b>3700</b>
--	------------------------	---	-------------

# RNAV (GPS) RWY 31

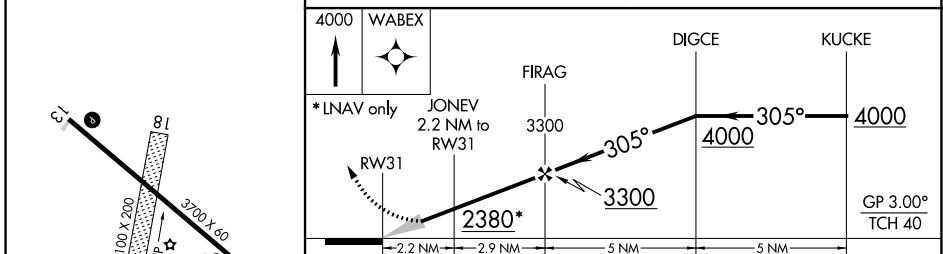
CREIGHTON MUNI (6K3)

RNP APCH.	<p><b>NA</b> Circling NA to Rwy 18 and 36. Baro-VNAV NA. Use Yankton altimeter setting; when not received, use O'Neill altimeter setting: increase DA to 2033 feet and all visibilities <math>\frac{1}{8}</math> SM; increase all MDA 20 feet.</p>	<p>MISSED APPROACH: Climb to 4000 direct WABEX and hold.</p>

YKN AWOS-3 <b>119.05</b>	MINNEAPOLIS CENTER <b>128.0 257.95</b>	CTAF <b>122.90</b>
-----------------------------	---	-----------------------



ELEV 1653	TDZE 1647
-----------	-----------



CATEGORY	A	B	C	D
LPV DA	2026-1 $\frac{1}{4}$	379 (400-1 $\frac{1}{4}$ )		NA
LNAV/VNAV DA	2026-1 $\frac{1}{4}$	379 (400-1 $\frac{1}{4}$ )		NA
LNAV MDA	2120-1	473 (500-1)		NA
CIRCLING	2160-1 507 (600-1)	2500-1 $\frac{1}{4}$ 847 (900-1 $\frac{1}{4}$ )		NA

NC-2, 18 MAY 2023 to 15 JUN 2023

NC-2, 18 MAY 2023 to 15 JUN 2023