

WAAS CH <b>86630</b> <b>W27A</b>	APP CRS <b>280°</b>	Rwy Idg TDZE Apt Elev	<b>3700</b> <b>1779</b> <b>1779</b>
--	------------------------	-----------------------------	---

# RNAV (GPS) RWY 27

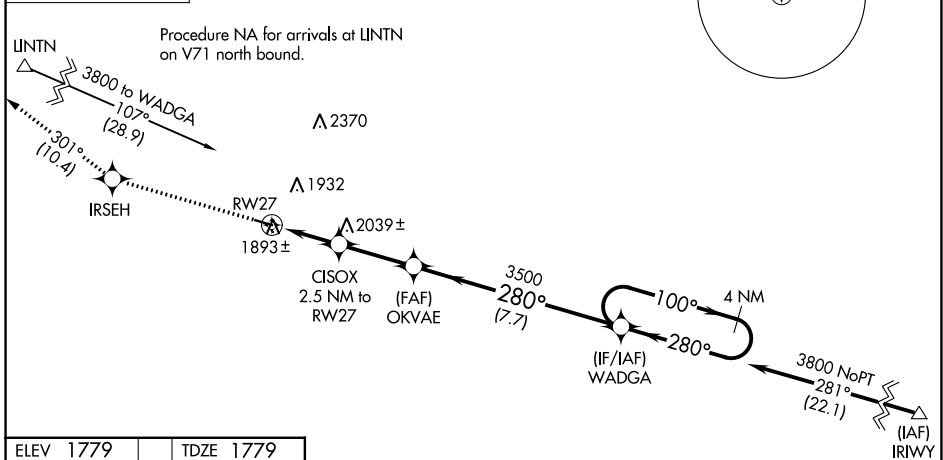
LINTON MUNI (7L2)

**RNP APCH.**

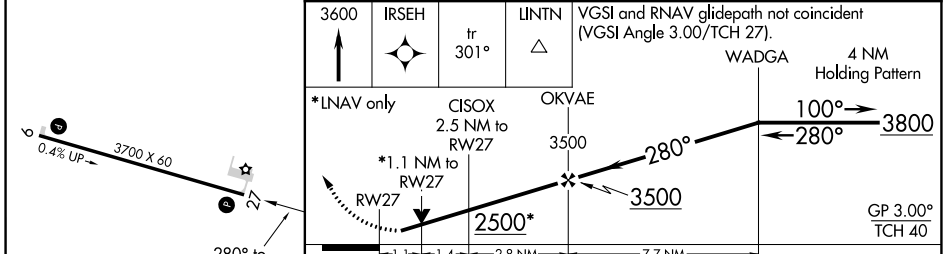
▼ For uncompensated Baro-VNAV systems, LNAV/VNAV NA below -18°C or above 54°C.  
 ▲ Rwy 27 helicopter visibility reduction below 3/4 SM NA. When local altimeter setting not received, use Bismarck Muni altimeter setting and increase all DA 107 feet and visibility LPV and LNAV/VNAV all Cats 1/4 SM; increase all MDA 120 feet and visibility LNAV Cat C 1/4 SM. Baro-VNAV and VDP NA when using Bismarck Muni altimeter setting.

MISSED APPROACH: Climb to 3600 direct IRSEH and on track 301° to LINTN and hold.

ASOS-3 <b>118.175</b>	MINNEAPOLIS CENTER <b>135.25 256.7</b>	CTAF <b>122.9</b>
--------------------------	---	----------------------



ELEV 1779	TDZE 1779
-----------	-----------



CATEGORY	A	B	C	D
LPV DA	2029-1 250 (300-1)			NA
LNAV/VNAV DA	2043-1 264 (300-1)			NA
LNAV MDA	2160-1	381 (400-1)	2160-1 <sup>1/8</sup> 381 (400-1 <sup>1/8</sup> )	NA

NC-1, 18 MAY 2023 to 15 JUN 2023

NC-1, 18 MAY 2023 to 15 JUN 2023