

WAAS CH 99630 W09A	APP CRS 100°	Rwy Idg TDZE Apt Elev	3700 1777 1779
--	------------------------	-----------------------------	---

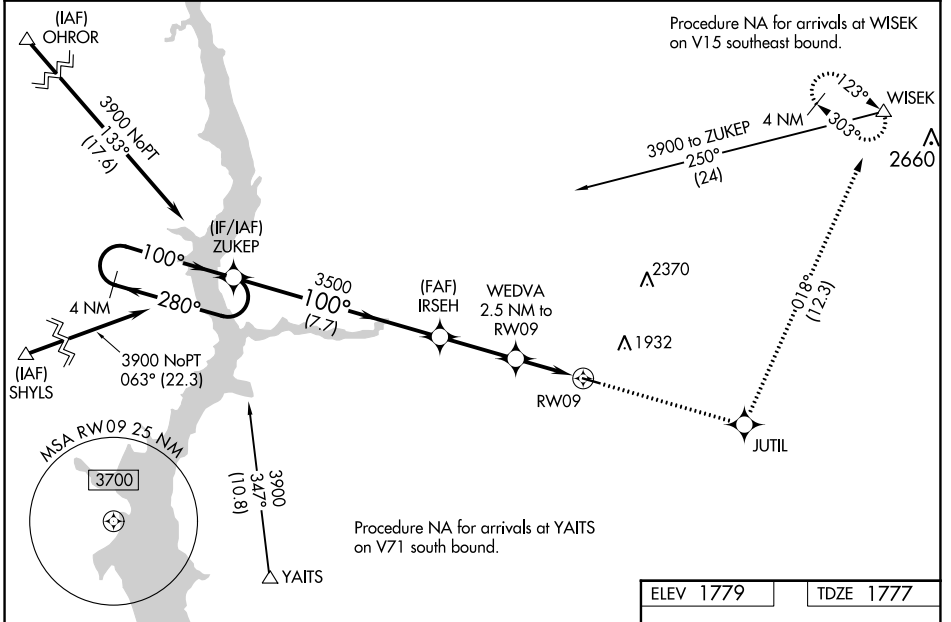
RNAV (GPS) RWY 9

LINTON MUNI (7L2)

▽ For uncompensated Baro-VNAV systems, LNAV/VNAV NA below -18°C (0°F) or above 54°C (130°F). DME/DME RNP-0.3 NA. When local altimeter setting not received, use Bismarck Muni altimeter setting: increase LPV DA to 2134 feet and all visibilities ¼ SM; increase LNAV/VNAV DA to 2198 and all visibilities ½ SM; increase all MDAs 120 feet and visibility LNAV Cat C ¼ SM and Circling Cat C ½ SM. Baro-VNAV and VDP NA when using Bismarck Muni altimeter setting.

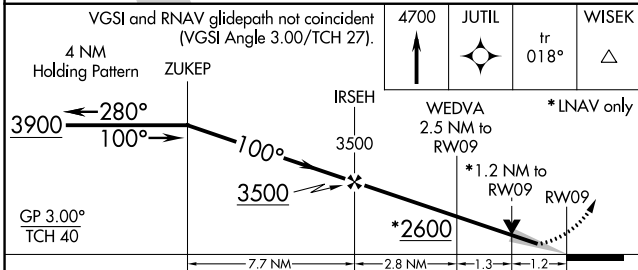
▲ MISSED APPROACH: Climb to 4700 direct JUTIL and on track 018° to WISEK and hold.

ASOS-3 118.175	MINNEAPOLIS CENTER 135.25 256.7	CTAF 122.9
--------------------------	---	----------------------



NC-1, 18 MAY 2023 to 15 JUN 2023

NC-1, 18 MAY 2023 to 15 JUN 2023



ELEV 1779	TDZE 1777			
VGSi and RNAV glidepath not coincident (VGSi Angle 3.00/TCH 27). 4700 JUTIL tr 018° WISEK Holding Pattern ZUKEP *LNAV only GP 3.00° TCH 40 7.7 NM 2.8 NM 1.3 NM 1.2 NM 100° to RW09 0.4% UP 3700 X 60				
CATEGORY	A	B	C	D
LPV DA	2027-1 250 (300-1)			NA
LNAV/VNAV DA	2091-1 314 (400-1)			NA
LNAV MDA	2160-1	383 (400-1)	2160-1½ 383 (400-1½)	NA
CIRCLING	2220-1 441 (500-1)	2360-1 581 (600-1)	2440-1¾ 661 (700-1¾)	NA

MIRL Rwy 9-27