

WAAS CH 69433 W36A	APP CRS 001°	Rwy Idg TDZE Apt Elev	4021 219 219
--	------------------------	-----------------------------	---

RNAV (GPS) RWY 36

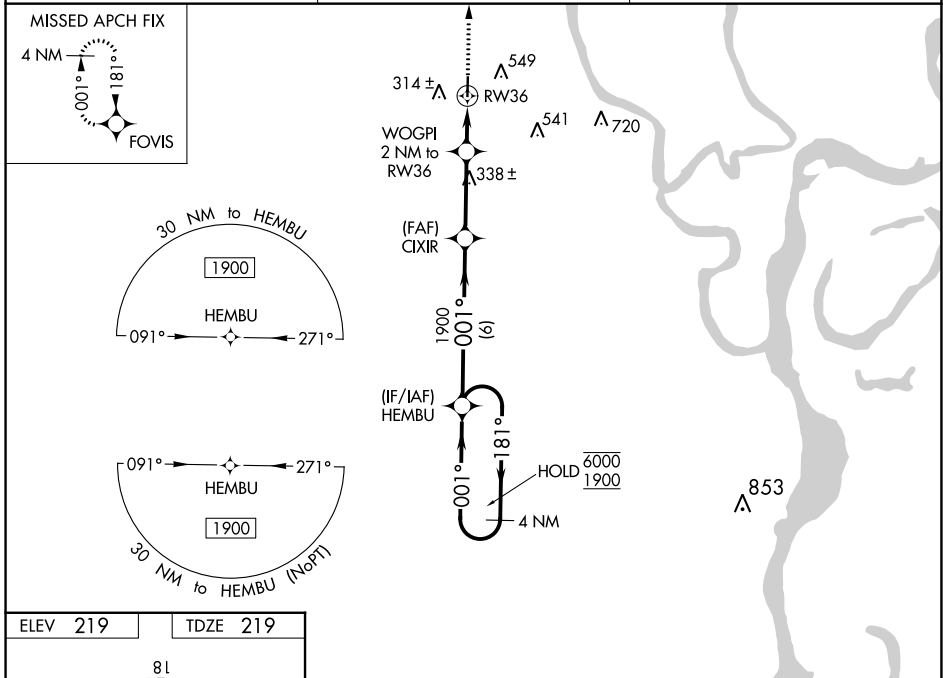
MARIANNA/LEE COUNTY-STEVE EDWARDS FLD (6M7)

RNP APCH

NA Rwy 36 helicopter visibility reduction below 3/4 SM NA. Baro-VNAV NA. Use Tunica altimeter setting; when not received, use West Memphis altimeter setting and increase LPV DA to 555 feet; LNAV/VNAV DA to 666 feet and all MDA 40 feet; increase Circling Cat C visibility 1/4 SM.

MISSED APPROACH: Climb to 1900 direct FOVIS and hold.

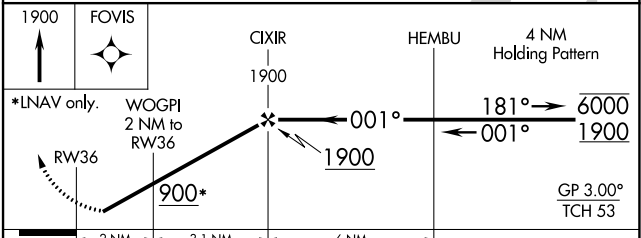
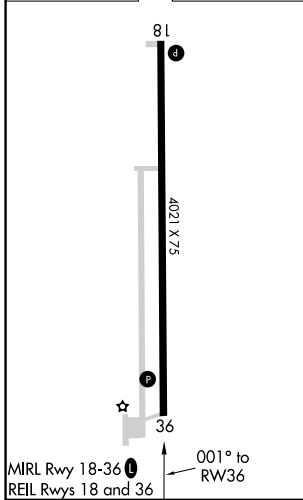
UTA AWOS-3 118.075	MEMPHIS CENTER 135.3 335.8	UNICOM 122.8 (CTAF)
------------------------------	--------------------------------------	-------------------------------



SC-1, 18 MAY 2023 to 15 JUN 2023

SC-1, 18 MAY 2023 to 15 JUN 2023

ELEV 219	TDZE 219
----------	----------



CATEGORY	A	B	C	D
LPV DA	527-1		308 (400-1)	NA
LNAV/VNAV DA	638-1 3/8		419 (500-1 3/8)	NA
LNAV MDA	660-1	441 (500-1)	660-1 3/8 441 (500-1 3/8)	NA
C CIRCLING	920-1	701 (800-1)	920-2 701 (800-2)	NA