

APP CRS	Rwy Idg	N/A
<b>347°</b>	TDZE	N/A
	Apt Elev	<b>4693</b>

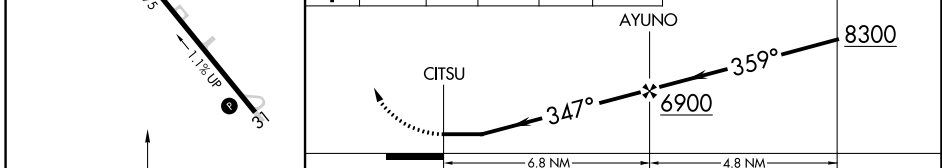
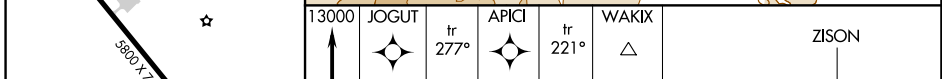
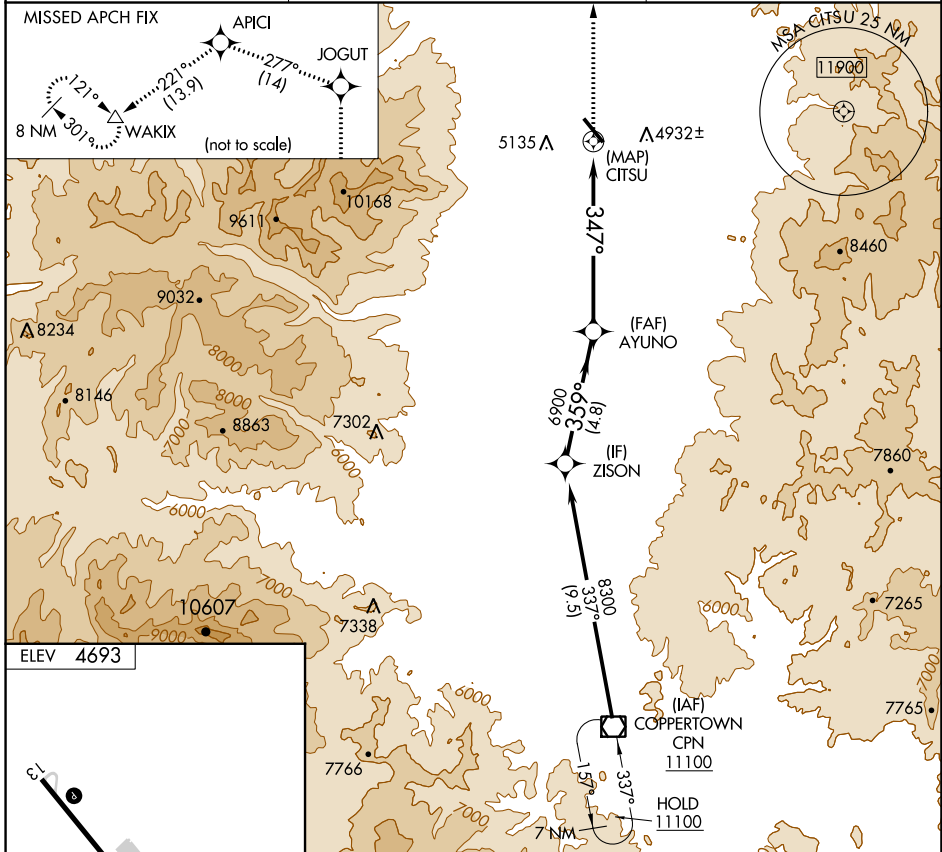
# RNAV (GPS)-A

DEER LODGE-CITY-COUNTY (38S)

**NA** Circling Rwy 13 NA at night. DME/DME RNP-0.3 NA. Rwy 13 helicopter visibility reduction below 1 SM NA. When local altimeter setting not received use Anaconda altimeter setting and increase all MDA 100 feet; increase Cat B visibility ¼ SM.

**MISSED APPROACH:** Climb to 13000 direct JOGUT and on track 277° to APICI and on track 221° to WAKIX and hold, continue climb-in-hold to 13000.

AWOS-AV	SALT LAKE CENTER	CTAF
<b>120.025</b>	<b>133.4 285.4</b>	<b>122.90</b>



CATEGORY	A	B	C	D
<b>CIRCLING</b>	5440-1 747 (800-1)	5460-1 767 (800-1)	5720-3 1027 (1100-3)	6300-3 1607 (1700-3)

NW-1, 18 MAY 2023 to 15 JUN 2023

NW-1, 18 MAY 2023 to 15 JUN 2023