

WAAS CH 53334 W09A	APP CRS 090°	Rwy Idg TDZE 1478 Apt Elev 1478
--	------------------------	---

RNAV (GPS) RWY 9

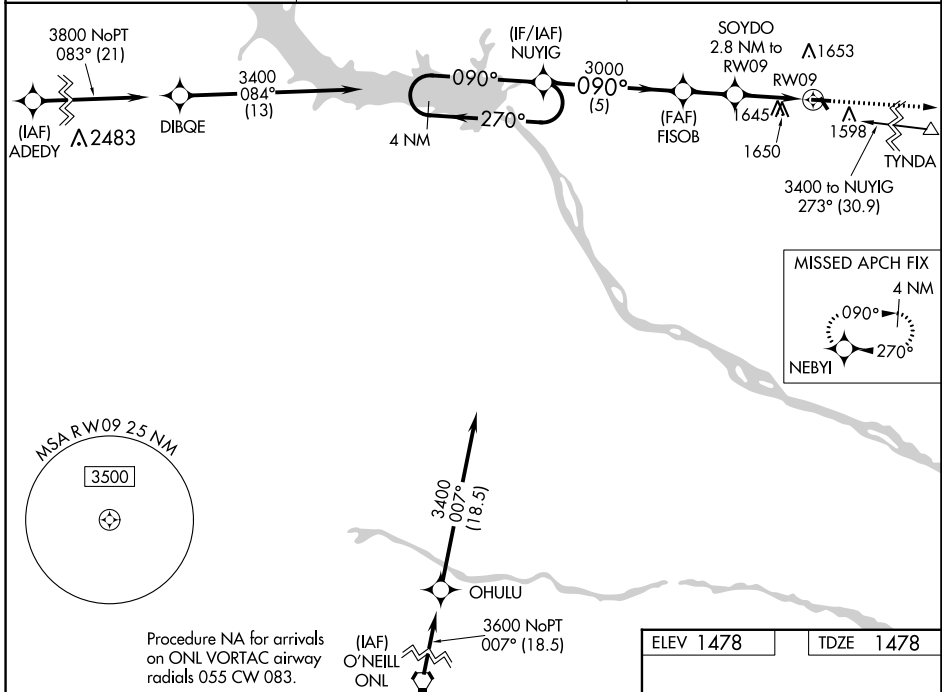
WAGNER MUNI (AGZ)

RNP APCH-GPS.

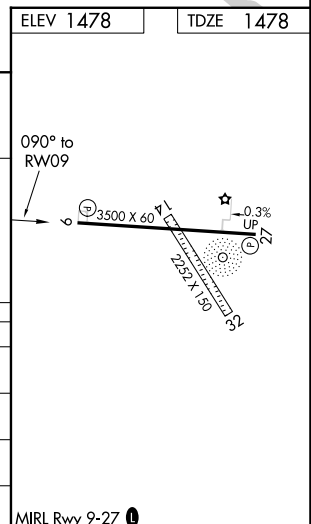
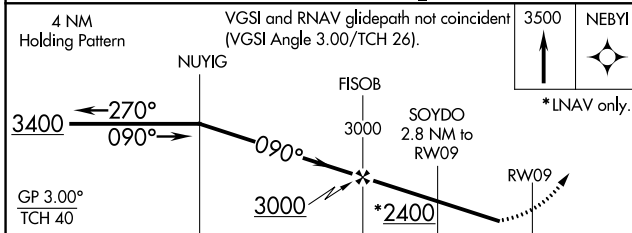
NA Rwy 9 helicopter visibility reduction below 3/4 SM NA. Circling NA to Rwy 14 and 32. Baro-VNAV NA. Use Yankton altimeter setting; when not received use O'Neill altimeter setting and increase all DA 51 feet, all MDA 60 feet and increase LPV all Cats visibility 1/8 mile, and LNAV/VNAV all Cats visibility 1/2 mile.

MISSED APPROACH:
Climb to 3500 direct NEBYI and hold.

YKN AWOS-3PT 119.05	MINNEAPOLIS CENTER 128.0 257.95	AUNICOM 122.8 (CTAF) 0
-------------------------------	---	----------------------------------



Procedure NA for arrivals on ONL VORTAC airway radials 055 CW 083.



CATEGORY	A	B	C	D
LPV DA	1847-1	369 (400-1)		NA
LNAV/VNAV DA	2053-1 5/8	575 (600-1 5/8)		NA
LNAV MDA	2020-1	542 (600-1)		NA
C CIRCLING	2080-1	602 (700-1)		NA

NC-1, 18 MAY 2023 to 15 JUN 2023

NC-1, 18 MAY 2023 to 15 JUN 2023