

RNAV (GPS) RWY 16

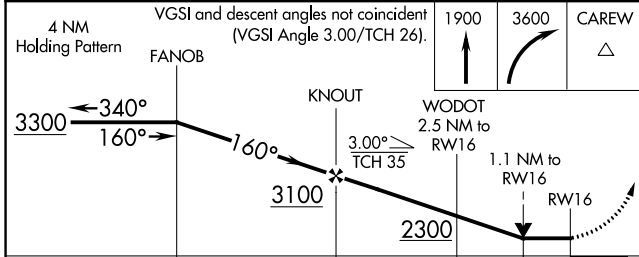
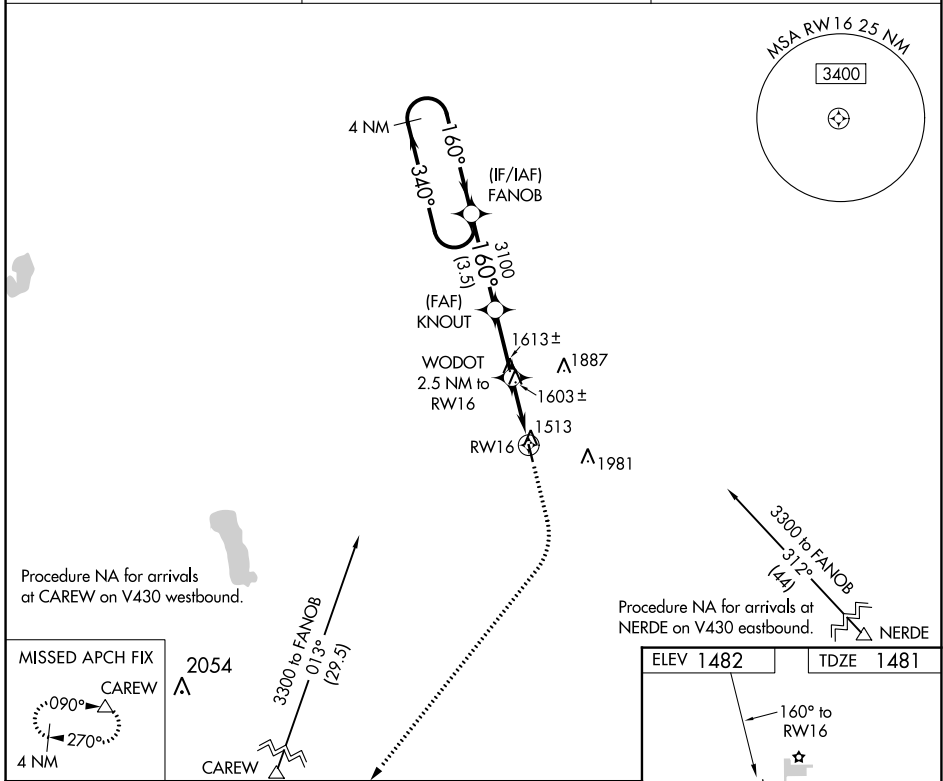
CANDO MUNI (9D7)

APP CRS	Rwy Idg	3500
160°	TDZE	1481
	Apt Elev	1482

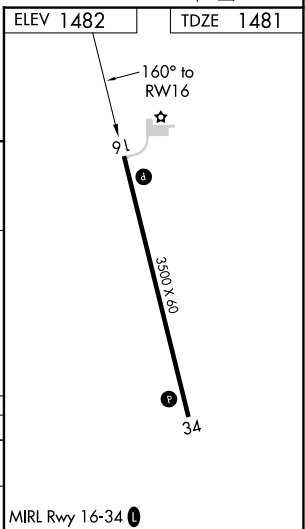
NA When local altimeter setting not received, use Devils Lake altimeter setting and increase all MDAs 80 feet. DME/DME RNP-0.3 NA. VDP NA with Devils Lake altimeter setting. Helicopter visibility reduction below 3/4 SM NA.

MISSED APPROACH: Climb to 1900 then climbing right turn to 3600 direct CAREW and hold.

AWOS-3 118.325	MINNEAPOLIS CENTER 124.2 270.3	CTAF 122.9 0
--------------------------	------------------------------------------	-------------------------------



CATEGORY	A	B	C	D
LNVAV MDA	1860-1	379 (400-1)		NA
CIRCLING	1900-1 418 (500-1)	1940-1 458 (500-1)		NA



NC-1, 18 MAY 2023 to 15 JUN 2023

NC-1, 18 MAY 2023 to 15 JUN 2023