

WAAS CH <b>90130</b> <b>W36A</b>	APP CRS <b>002°</b>	Rwy Idg TDZE Apt Elev	<b>4000</b> <b>904</b> <b>917</b>
--	------------------------	-----------------------------	---

# RNAV (GPS) RWY 36

ELDON MODEL AIRPARK (H79)

RNP APCH.

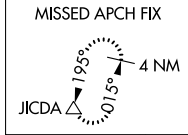
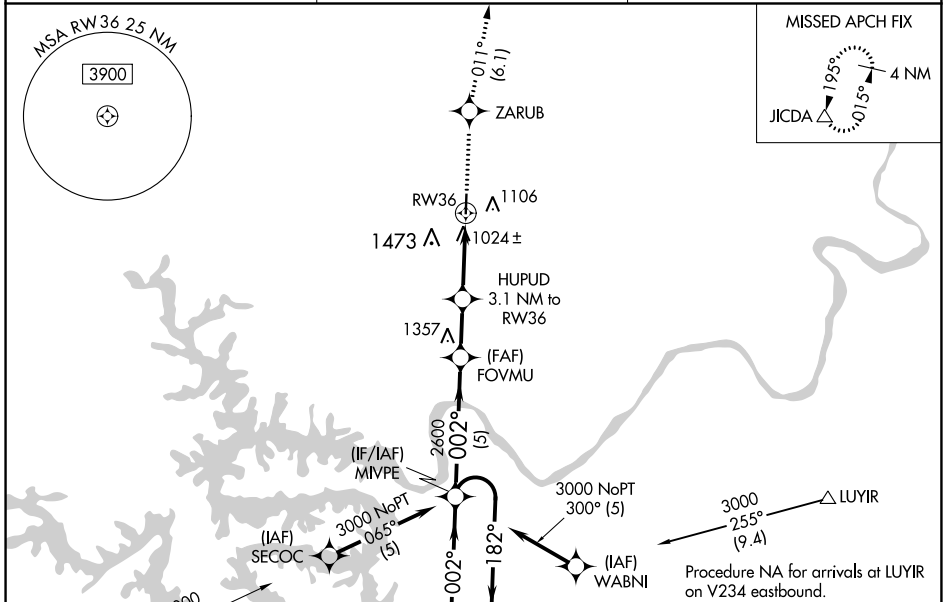
**NA** Rwy 36 helicopter visibility reduction below 3/4 SM NA. Use Kaiser/Lake Ozark altimeter setting, when not received use Fort Leonard Wood altimeter setting and increase all MDA 100 feet; increase LP Cat C visibility 1/2 SM, increase LNAV Cat C and Circling Cats B/C visibility 1/4 SM.

MISSED APPROACH: Climb to 3100 direct ZARUB and on track 011° to JICDA and hold.

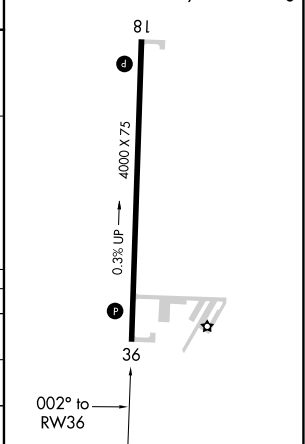
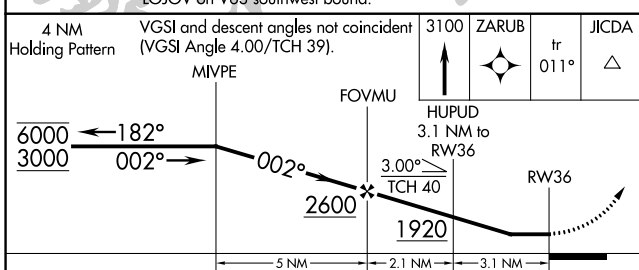
AIZ AWOS-3PT  
**135.325**

MIZZU APP CON  
**124.1 353.925**

UNICOM  
**122.8 (CTAF) 0**



ELEV 917	TDZE 904
MIRL Rwy 18-36	
REIL Rws 18 and 36	



CATEGORY	A	B	C	D
LP MDA	1320-1	416 (500-1)	1320-1 1/8 416 (500-1 1/8)	NA
LNAV MDA	1440-1	536 (600-1)	1440-1 1/2 536 (600-1 1/2)	NA
CIRCLING	1520-1 603 (700-1)	1820-1 1/4 903 (1000-1 1/4)	1820-2 3/4 903 (1000-2 3/4)	NA

NC-3, 18 MAY 2023 to 15 JUN 2023

NC-3, 18 MAY 2023 to 15 JUN 2023