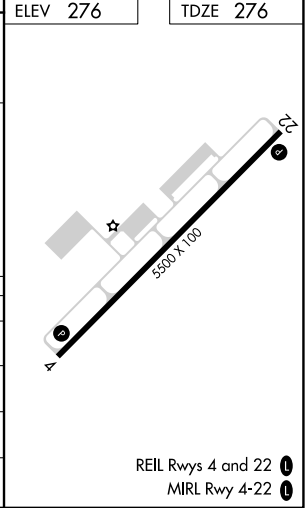
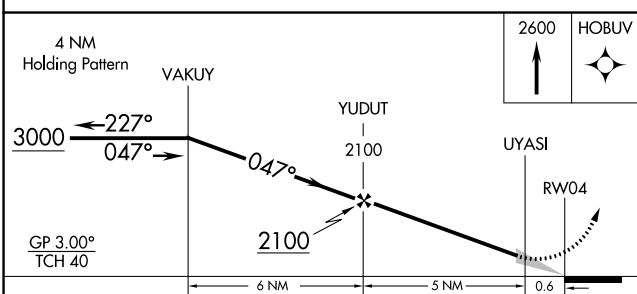
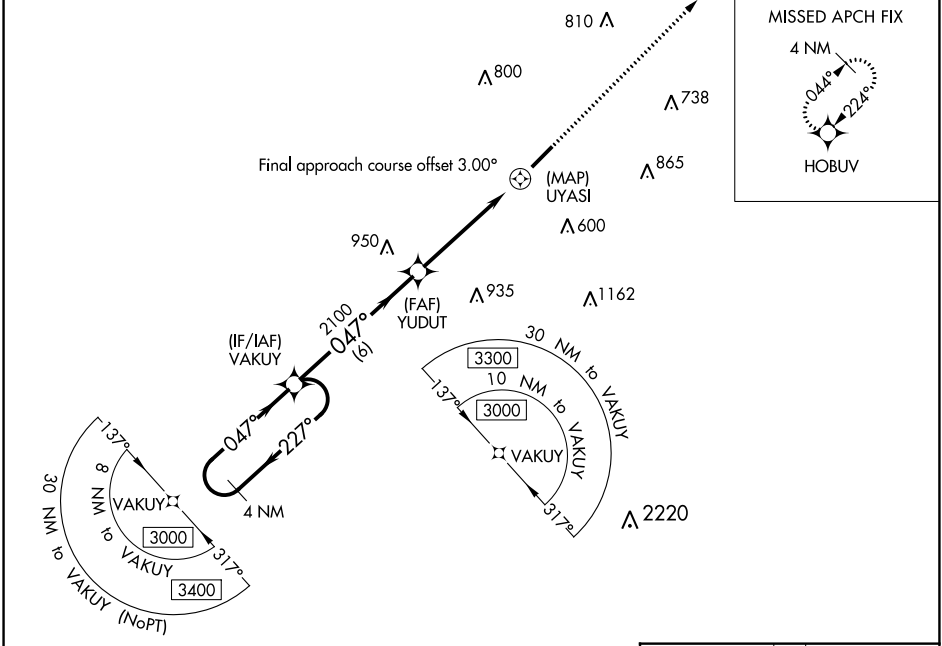


WAAS CH <b>97338</b> <b>W04A</b>	APP CRS <b>047°</b>	Rwy Idg TDZE <b>276</b> Apt Elev <b>276</b>	<b>5500</b>
--	------------------------	---	-------------

# RNAV (GPS) RWY 4

CONWAY RGNL (CXW)

<p><b>Baro-VNAV NA.</b> Use Bill and Hillary Clinton National/Adams Field altimeter setting; when not received, procedure NA. DME/DME RNP-0.3 NA.</p>	<p>MISSED APPROACH: Climb to 2600 direct HOBUV and hold.</p>		
<p>AWOS-2 <b>118.775</b></p>	<p>LITTLE ROCK APP CON <b>135.4 353.6</b> (040°-239°) <b>119.5 306.2</b> (240°-039°)</p>	<p>CLNC DEL <b>121.2</b></p>	<p>UNICOM <b>123.05 (CTAF)</b> <b>0</b></p>



CATEGORY	A	B	C	D
LPV DA	583-1		307 (400-1)	
LNAV/VNAV DA	658-1¼		382 (400-1¼)	
LNAV MDA	1340-1¼ 1064 (1100-1¼)	1340-1½ 1064 (1100-1½)	1340-3	1064 (1100-3)
<b>C</b> CIRCLING	1340-1¼ 1064 (1100-1¼)	1340-1½ 1064 (1100-1½)	1340-3 1064 (1100-3)	1380-3 1104 (1200-3)

SC-1, 18 MAY 2023 to 15 JUN 2023

SC-1, 18 MAY 2023 to 15 JUN 2023