

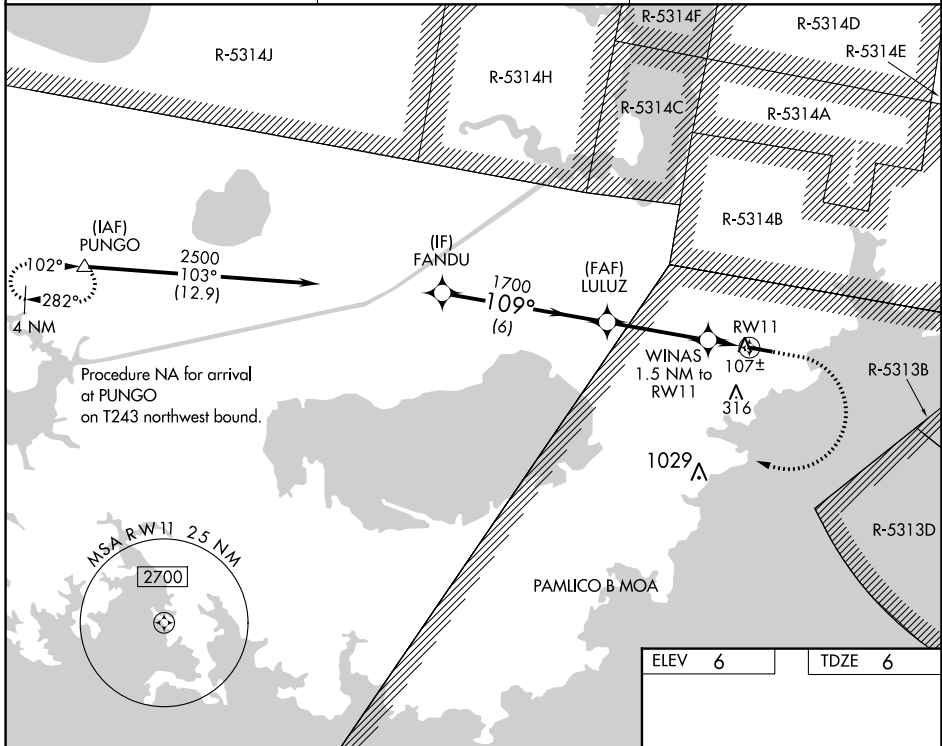
WAAS CH 40442 W11A	APP CRS 109°	Rwy Idg TDZE Apt Elev	4700 6 6
--	------------------------	-----------------------------	-------------------------------------

RNAV (GPS) RWY 11

HYDE COUNTY (7W6)

RNP APCH. MISSED APPROACH: Climb to 500 then climbing right turn 3000 direct PUNGO and hold.

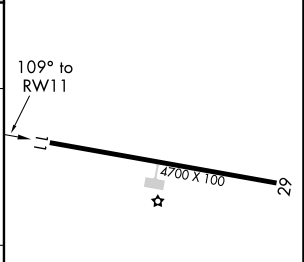
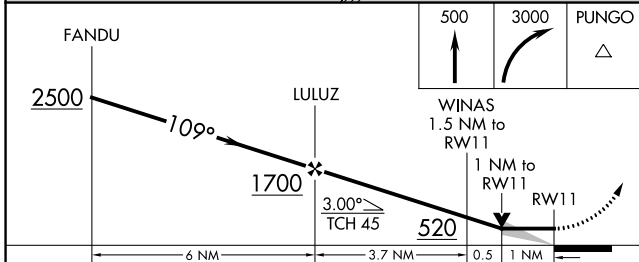
AWOS-3P 119.275	CHERRY POINT APP CON 124.725 350.35	UNICOM 122.7 (CTAF)
---------------------------	---	-------------------------------



SE-2, 18 MAY 2023 to 15 JUN 2023

SE-2, 18 MAY 2023 to 15 JUN 2023

ELEV 6	TDZE 6
--------	--------



CATEGORY	A	B	C	D
LP MDA	360-1	354 (400-1)		NA
LNAV MDA	360-1	354 (400-1)		NA
CIRCLING	420-1 414 (500-1)	460-1 454 (500-1)		NA

MIRL Rwy 11-29