

NELIGH

ANTELOPE CO (4V9) 1 SW UTC-6(-5DT) N42°06.74' W98°02.39'

OMAHA
L-12H
IAP

1774 B NOTAM FILE OLU

RWY 01-19: H3700X60 (CONC) MIRL

RWY 01: PAPI(P2L)—GA 3.0° TCH 41'.

RWY 19: PAPI(P2L)—GA 3.5° TCH 41'. Tree.

RWY 13-31: H3310X60 (CONC) S-12.5 MIRL

RWY 13: Thld dspclcd 405'. Road.

RWY 31: Thld dspclcd 405'. Road.

RUNWAY DECLARED DISTANCE INFORMATION

RWY 13: TORA-3310 TODA-3310 ASDA-3310 LDA-2905

RWY 31: TORA-3310 TODA-3310 ASDA-3310 LDA-2905

SERVICE: FUEL 100LL LGT ACTIVATE PAPI Rwy 01-19; MIRL Rwy 01-19—CTAF; after 0200Z‡ ACTIVATE MIRL Rwy 13-31—CTAF.

AIRPORT REMARKS: Attended Mon-Fri 1400-2300Z‡. Courtesy car avbl.

AIRPORT MANAGER: 402-887-4827

COMMUNICATIONS: CTAF/UNICOM 122.8

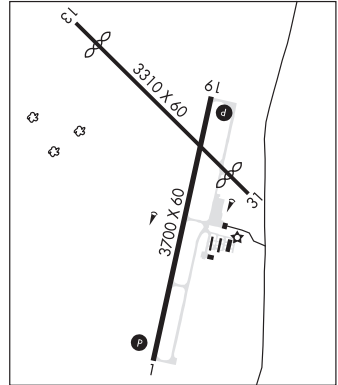
Ⓡ **MINNEAPOLIS CENTER APP/DEP CON** 128.0

CLEARANCE DELIVERY PHONE: For CD ctc Minneapolis ARTCC at 651-463-5588.

RADIO AIDS TO NAVIGATION: NOTAM FILE ONL.

OMNEILL (H) (H) VORTACW 113.9 ONL Chan 86 N42°28.23' W98°41.22' 116° 35.9 NM to fld. 2028/10E.

COMM/NAV/WEATHER REMARKS: UNICOM unmon.



NORFOLK RGNL/KARL STEFAN MEML FLD (OFK)(KOFK) 3 SW UTC-6(-5DT) N41°59.13'

OMAHA
H-5C, L-12H
IAP, AD

W97°26.11'

1573 B NOTAM FILE OFK MON Airport

RWY 14-32: H5806X100 (ASPH-PFC) S-75, D-192, 2S-175,

2D-400 MIRL 0.4% up SE

RWY 14: PAPI(P4L)—GA 3.0° TCH 40'. Thld dspclcd 287'. Railroad.

RWY 32: REIL. PAPI(P4L)—GA 3.5° TCH 49'. Thld dspclcd 360'. Tree.

RWY 02-20: H5801X100 (ASPH-PFC) S-60, D-192, 2D-360 HIRL

RWY 02: MALSR. PAPI(P4L)—GA 3.0° TCH 49'. Fence.

RWY 20: PAPI(P4L)—GA 3.0° TCH 40'. Thld dspclcd 297'. Tree.

RUNWAY DECLARED DISTANCE INFORMATION

RWY 14: TORA-5443 TODA-5800 ASDA-5443 LDA-5160

RWY 32: TORA-5517 TODA-5800 ASDA-5517 LDA-5160

SERVICE: S4 FUEL 100LL, JET A LGT Actvt MALSR Rwy 02; REIL Rwy 32; PAPI Rwy 02, 20, 14 and 32; HIRL Rwy 02-20; MIRL Rwy 14-32—CTAF.

AIRPORT REMARKS: Attended Mon-Fri 1300-0100Z‡; Sat 1300-2300Z‡; Sun 1600-2300Z‡. For svc after hrs call 402-841-5130 or 402-992-7914. Rwy svc fuel avbl 24 hrs for 100LL only. Rwy 20 dsgnd as the calm wind rwy. All rwys have left hand tfc only.

AIRPORT MANAGER: 402-371-7210

WEATHER DATA SOURCES: ASOS 119.025 (402) 644-4480.

COMMUNICATIONS: CTAF/UNICOM 122.7

RCO 122.3 (COLUMBUS RADIO)

Ⓡ **MINNEAPOLIS CENTER APP/DEP CON** 125.025

CLEARANCE DELIVERY PHONE: For CD if una to ctc on FSS freq, ctc Minneapolis ARTCC at 651-463-5588.

AIRSPACE: CLASS E.

RADIO AIDS TO NAVIGATION: NOTAM FILE OFK.

(L) (L) **VOR/DME** 109.6 OFK Chan 33 N41°59.28' W97°26.07' at fld. 1539/8E.

VOR unusable:

150°-210° byd 30 NM blo 4,000'

210°-255° byd 34 NM blo 3,500'

255°-150° byd 34 NM blo 3,300'

DME unusable:

150°-210° byd 30 NM blo 4,000'

210°-255° byd 34 NM blo 4,000'

255°-150° byd 34 NM blo 3,300'

ILS 111.5 I-OFK Rwy 02. Class IE.

