

ALBERT (See PHILIPSBURG on page 297)

ALLEGHENY CO (See PITTSBURGH on page 299)

ALLENTOWN

ALLENTOWN QUEEN CITY MUNI (XLL)(KXLL) 2 SW UTC-5(-4DT) N40°34.22' W75°29.30'

NEW YORK
L-30K, 33A, 34G
IAP

399 B NOTAM FILE IPT

RWY 07-25: H3950X75 (ASPH-GRVD) S-12 MIRL

RWY 07: REIL. PAPI(P4L)—GA 3.0° TCH 41'. Brush.

RWY 25: REIL. PAPI(P4L)—GA 3.5° TCH 40'. Pole.

RWY 15-33: H3160X75 (ASPH) S-12 MIRL 0.4% up SE

SERVICE: S2 FUEL 100LL, JET A LGT Actvt REIL Rwy 07-25; MIRL Rwy 07-25 & 15-33—CTAF. Rwy 25 VGSi unusbl byd 3 deg L of course.

NOISE: Noise abatement procedures in effect, for details ctc arpt manager.

AIRPORT REMARKS: Attended 1200-2300Z. Deer, groundhogs and birds on and invof arpt. For svc after hrs ctc 610-266-6000.

AIRPORT MANAGER: 610-791-5193

WEATHER DATA SOURCES: AWOS-3 127.875 (610) 231-3111. Unavbl byd 8 nm.

COMMUNICATIONS: CTAF/UNICOM 122.7

③ APP/DEP CON 119.65 (3000' and blo) 124.45 (above 3000')

CLNC DEL 118.9

CLEARANCE DELIVERY PHONE: For CD ctc Allentown Apch at 800-728-6322.

RADIO AIDS TO NAVIGATION: NOTAM FILE IPT.

EAST TEXAS (L) (L) VOR/DME 110.2 ETX Chan 39 N40°34.86' W75°41.04' 103° 9.0 NM to fld. 741/9W.

VOR unusable:

255°-265°



LEHIGH VALLEY INTL (ABE)(KABE) 3 NE UTC-5(-4DT) N40°39.14' W75°26.42'

NEW YORK
H-101, 12J, L-33A, 34G
IAP, AD

394 B TPA—See Remarks LRA Class I, ARFF Index C NOTAM FILE ABE

RWY 06-24: H7599X150 (ASPH-GRVD) S-120, D-228, 2S-175, 2D-368 PCN 65 F/C/X/U HIRL CL

RWY 06: MALSR. PAPI(P4L)—GA 3.0° TCH 74'. RVR-TR Trees.

RWY 24: REIL. PAPI(P4R)—GA 3.0° TCH 71'. RVR-TR Thld dsplcd 510'. Road.

RWY 13-31: H5800X150 (ASPH-GRVD) S-75, D-161, 2S-175,

2D-290 PCN 35 F/A/W/U HIRL

RWY 13: MALSR.

RWY 31: REIL. PAPI(P4L)—GA 3.0° TCH 54'. Pole.

RUNWAY DECLARED DISTANCE INFORMATION

RWY 06: TORA-7599 TODA-7599 ASDA-7599 LDA-7599

RWY 13: TORA-5800 TODA-5800 ASDA-5800 LDA-5800

RWY 24: TORA-7599 TODA-7599 ASDA-7599 LDA-7089

RWY 31: TORA-5800 TODA-5800 ASDA-5800 LDA-5800

ARRESTING GEAR/SYSTEM

RWY 13: EMAS

RWY 31: EMAS

SERVICE: S4 FUEL 100LL, JET A OX1, 2

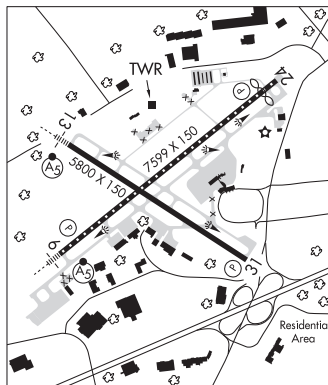
NOISE: Noise abatement procedures for turbojet powered acft in effect; preferential Rwy 06-24. Rwy 06-24 fly rwy heading until 2000'.

Rwy 06, Rwy 13 and Rwy 24 departures be advised that departures are over a noise sensitive area. Rwy 31 turbojet departures turn right heading 360° until 2000' MSL.

AIRPORT REMARKS: Attended continuously. Birds, groundhogs and deer on and invof arpt. TPA—1399(1006) reciprocating props, 1999(1606) turbine powered acft. Military acft plan to park and refuel on Hangar 7 apron. Twy C rstd to maximum acft weight 12,500 lbs. Twy B south of Twy B3 rstd to acft with wingspan 118' or less. Twy B3 west of Rwy 13-31 rstd to acft with wingspan 118' or less. Twy E north of Rwy 06-24 rstd to max acft weight 12,500 lbs. Twy J south of Twy A rstd to acft with wingspan 118' or less. North GA aprn clsd. U.S. Customs user fee arpt. Ldg fee. Flight Notification Service (ADCUS) avbl—2 hours PPR.

AIRPORT MANAGER: 610-266-6001

WEATHER DATA SOURCES: ASOS 126.975 (610) 264-1765.



CONTINUED ON NEXT PAGE

CONTINUED FROM PRECEDING PAGE

COMMUNICATIONS: ATIS 126.975 UNICOM 122.95

Ⓡ ALLENTOWN APP/DEP CON 119.65 (3000' & blo) 124.45 (abv 3000') 124.45 (from west)

TOWER 120.5 GND CON 121.9 CLNC DEL 124.05

AIRSPACE: CLASS C svc ctc APP CON.

RADIO AIDS TO NAVIGATION: NOTAM FILE ABE.

ALLENTOWN (L) (L) VORTACW 117.5 FJC Chan 122 N40°43.60' W75°27.28' 182° 4.5 NM to fld. 681/10W.

TACAN AZIMUTH & DME unusable:

061°-299° byd 30 NM blo 4,000'

300°-060° byd 26 NM blo 4,500'

VOR unusable:

021°-189° byd 10 NM

190°-260° blo 9,000'

190°-260° byd 24 NM

261°-306° byd 9 NM blo 4,000'

307°-349°

350°-020° blo 3,500'

350°-020° byd 33 NM blo 4,000'

ILS 110.7 I-ABE Rwy 06. Class IIE.

ILS 111.9 I-BXY Rwy 13. Class IB.

ILS/DME 108.55 I-GUW Chan 22(Y) Rwy 24. Class "IE".

COMM/NAV/WEATHER REMARKS: During ATC Zero events, ARFF will mnt 120.5 for emerg notifications.

ALLENTOWN N40°43.60' W75°27.28' NOTAM FILE ABE.

NEW YORK

(L) (L) VORTACW 117.5 FJC Chan 122 182° 4.5 NM to Lehigh Valley Intl. 681/10W.

H-10I, L-30K, 33A, 34G

TACAN AZIMUTH & DME unusable:

061°-299° byd 30 NM blo 4,000'

300°-060° byd 26 NM blo 4,500'

VOR unusable:

021°-189° byd 10 NM

190°-260° blo 9,000'

190°-260° byd 24 NM

261°-306° byd 9 NM blo 4,000'

307°-349°

350°-020° blo 3,500'

350°-020° byd 33 NM blo 4,000'