

AUGUSTA

AUGUSTA SPB (M00) 3 S UTC-5(-4DT) N44°16.05' W69°46.90'

MONTREAL

23 NOTAM FILE BGR
WATERWAY 13W-31W: 2500X100 (WATER)
WATERWAY 13W: Trees. Rgt tfc.
WATERWAY 31W: Trees.

SEAPLANE REMARKS: Unattended. Daytime use only. Unmarked shoals E of sealane. Location has tidal fluctuation of 4'. Sealane poorly marked, irregular shaped channel. Docks removed durg winter months Oct-May.

AIRPORT MANAGER: 207-626-2306

COMMUNICATIONS: CTAF 122.9

CLEARANCE DELIVERY PHONE: For CD ctc Portland Apch at 207-874-7320, when Apch clsd ctc Boston ARTCC at 603-879-6859.

AUGUSTA STATE (AUG)(KAUG) 1 NW UTC-5(-4DT) N44°19.24' W69°47.84'

MONTREAL

352 B TPA-1400(1048) NOTAM FILE AUG

H-11D, L-32H

RWY 17-35: H5002X100 (ASPH-GRVD) S-50, D-60 HIRL

IAP

0.7% up S
RWY 17: MALSR. PAPI(P4L)—GA 3.0° TCH 53'.
RWY 35: REIL. PAPI(P4L)—GA 3.0° TCH 40'. Road.

RWY 08-26: H2613X75 (ASPH) S-30 MIRL

RWY 08: Trees.
RWY 26: Fence.

RUNWAY DECLARED DISTANCE INFORMATION

RWY 08: TORA-2613 TODA-2613 ASDA-2613 LDA-2613
RWY 17: TORA-5002 TODA-5002 ASDA-5002 LDA-5002
RWY 26: TORA-2613 TODA-2613 ASDA-2613 LDA-2613
RWY 35: TORA-5002 TODA-5002 ASDA-5002 LDA-5002

ARRESTING GEAR/SYSTEM

RWY 17: EMAS
RWY 35: EMAS

SERVICE: S4 **FUEL** 100LL, JET A **LGT** ACTIVATE MALSR Rwy 17, REIL Rwy 35, PAPI Rwy 17 and Rwy 35, HIRL Rwy 17-35, MIRL Rwy 08-26—CTAF.

AIRPORT REMARKS: Attended 1200-0100Z†. Arpt unatndd aft dark durg snow and ice season. Fld cond rprts snow depths, BA may not be avbl for rwys fm 2300-1100Z†. Birds and deer on and invof arpt. Seagulls on and invof rwy intersections. For 100LL aft nml bus hrs call 207-622-2507. Rwy 35 designated calm wind rwy. Rwy 17-35 have EMAS category B2. Twy F east clsd to all acct with wing span greater than 45'. Air carrier ramp clsd to general aviation tfc. Ldg fee for multi-engine acct, fee waived with fuel purchase.

AIRPORT MANAGER: 207-626-2306

WEATHER DATA SOURCES: ASOS 118.325 (207) 623-0432.

COMMUNICATIONS: CTAF/UNICOM 123.0

RCO 122.1R 114.95T 122.2 (BANGOR RADIO)

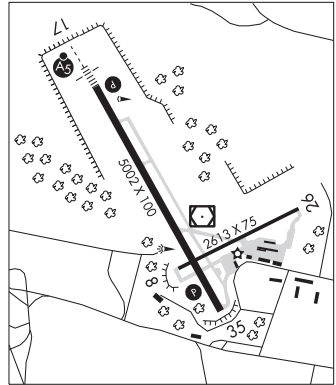
Ⓡ **PORTLAND APP/DEP CON** 128.35 (1045-0500Z†)

Ⓡ **BOSTON CENTER APP/DEP CON** 128.2 (112°-292°) 120.25 (293°-111°) (0500-1045Z†)

CLNC DEL 119.95 299.2

CLEARANCE DELIVERY PHONE: For CD when Portland Apch clsd, ctc Boston ARTCC at 603-879-6859.

AIRSPACE: CLASS E.



CONTINUED ON NEXT PAGE

CONTINUED FROM PRECEDING PAGE

RADIO AIDS TO NAVIGATION: NOTAM FILE AUG.

(VL) (DH) VOR/DME 114.95 AUG Chan 96(Y) N44°19.20' W69°47.79' at fld. 349/18W.

VOR unusable:

- 005°-015° byd 10 NM blo 7,000'
- 018°-050° byd 40 NM
- 055°-058° byd 40 NM
- 065°-089° byd 40 NM
- 075°-089° byd 25 NM blo 3,000'
- 090°-115° byd 15 NM
- 116°-175° byd 40 NM
- 116°-189° byd 25 NM blo 3,000'
- 188°-207° byd 40 NM
- 190°-205° byd 10 NM blo 5,000'
- 206°-220° byd 25 NM blo 3,000'
- 208°-213° byd 40 NM blo 3,000'
- 208°-213° byd 49 NM blo 7,000'
- 208°-213° byd 68 NM
- 225°-245° byd 40 NM
- 246°-256° byd 40 NM blo 7,000'
- 246°-256° byd 53 NM
- 257°-261° byd 40 NM
- 271°-275° byd 40 NM
- 300°-353° byd 40 NM

DME unusable:

- 010°-070° byd 25 NM blo 7,000'
- 071°-143° byd 25 NM blo 3,000'
- 144°-154° byd 25 NM blo 7,000'
- 155°-189° byd 25 NM blo 3,000'
- 190°-205° byd 10 NM blo 5,000'
- 206°-220° byd 25 NM blo 3,000'
- 221°-285° byd 15 NM blo 6,000'

DUNNS NDB (LOMW) 366 AU N44°24.66' W69°51.64' 171° 6.1 NM to fld. 238/18W.

ILS 108.7 I-AUG Rwy 17. Class I.B. LOM DUNNS NDB. Glideslope unusable byd 5° right side of LOC course; blw 430'; byd 9 NM. LOC unusable fm 0.5 NM to thld abv 1,500'.

BANGOR

BANGOR INTL (BGR)(KBGR) P (ANG ARNG) 3 W UTC-5(-4DT) N44°48.45' W68°49.69'
 192 B TPA—See Remarks LRA ARFF Index—See Remarks NOTAM FILE BGR

HALIFAX
H-11D, L-32I
IAP, DIAP, AD

RWY 15-33: H11440X200 (ASPH-GRVD) S-100, D-210, 2D-400

PCN 120R/A/W/T HIRL CL

RWY 15: ALSF2. TDZL. PAPI(P4L)—GA 3.0° TCH 55'. RVR-TMR 0.4% down.

RWY 33: MALS.R. PAPI(P4L)—GA 3.0° TCH 57'. RVR-TMR Trees.

RUNWAY DECLARED DISTANCE INFORMATION

RWY 15: TORA-11440 TODA-11440 ASDA-11440 LDA-11440

RWY 33: TORA-11440 TODA-11440 ASDA-11440 LDA-11440

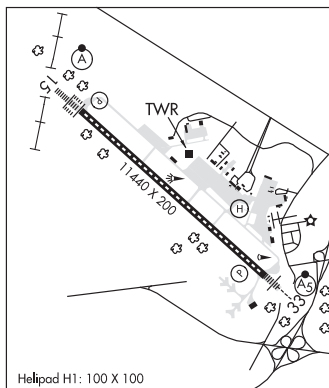
SERVICE: S4 FUEL 100LL, JET A OX 2, 4 MILITARY—JASU 1(MD-3) 1(MC-11) (MA-1A) FUEL A+ + (Mil), A, A+ (C207-992-4600) (NC-100LL) FLUID SP PRESAIR LPOX LOX -Off-base contracted LOX avbl H24-rqr 24 hr notice. OIL O-133-148(Mil)

AIRPORT REMARKS: Attended continuously. TPA for turbo jet acct is 2000(1808) unless otherwise instructed. ARFF Index B with Index E capabilities avbl 24/7. Flight Notification Service (ADCUS) available. Twy L CLOSED.

MILITARY REMARKS: Transient acct may be diverted to civilian side during non-duty hrs & weekends. Fee required; no ANG transient alert.

CAUTION Bash Phase II period Sep-Nov, Apr-May. Expect increased bird activity. Ctc Base Ops/Command Post/SOF for current bird watching cond. **MISC** Rwy 15-33 grooved. **ANG** Opr 1100-1930Z‡ Mon-Fri, clsd weekends and hol. PPR rqr for ANG ramp. Ctc fld mgmt DSN 698-7232, C207-404-7232 for PPR dur opr hrs. Pre-coord all transportation requirements and and haz cargo with PPR rqr. PPR valid +/- 1 hr unless prior coord. 3 hr out call, 30 min out call 311.0 to CFM customs/AG and tran svc. Comd post C207-404-7788 24 hrs. **ARNG** Opr 1230-2100Z‡ Mon-Fri exc hol. Ltd maint. J8. PPR May-Oct svc DSN 626-1100.

AIRPORT MANAGER: 207-992-4600



CONTINUED ON NEXT PAGE