

**MISSOULA MONTANA** (MSO)(KMSO) 4 NW UTC-7(-6DT) N46°54.98' W114°05.43'  
 3206 B Class I, ARFF Index B NOTAM FILE MSO  
**RWY 12-30:** H9501X150 (ASPH-GRVD) S-145, D-170, 2D-255  
 PCN 83 F/D/W/T HIRL

**GREAT FALLS**  
 H-ID, L-13C  
 IAP, AD

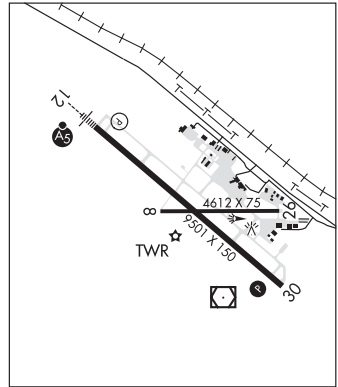
**RWY 12:** MALS.R. PAPI(P4L)—GA 3.0° TCH 55'. RVR-T  
**RWY 30:** REIL. PAPI(P4L)—GA 3.0° TCH 50'. RVR-R  
**RWY 08-26:** H4612X75 (ASPH-GRVD) S-30, D-50 PCN 40 F/D/W/T  
 MIRL

**RUNWAY DECLARED DISTANCE INFORMATION**

**RWY 08:** TORA-4612 TODA-4612 ASDA-4612 LDA-4612  
**RWY 12:** TORA-9501 TODA-9501 ASDA-9501 LDA-9501  
**RWY 26:** TORA-4612 TODA-4612 ASDA-4612 LDA-4612  
**RWY 30:** TORA-9501 TODA-9501 ASDA-9501 LDA-9501

**SERVICE:** S4 **FUEL** 100LL, JET A1+ **OX** 1, 2, 3, 4 **LGT** When ATCT  
 clsd ACTVT MALS.R Rwy 12; PAPI Rwy 30; MIRL Rwy 08-26; HIRL  
 Rwy 12-30—CTAF.

**AIRPORT REMARKS:** Attended continuously. Parachute Jumping. Cold temperature airport. Altitude correction required at or below -12C. Migratory and small bird activity on and in/ov arpt dur months of April-May and Oct-Dec. When twr clsd Rwy 08-26 clsd exc taxi. Hang glider ops 5.5 NM east of AER 30. Ctc arpt mgr to req apvl prior to ultralight ops. Rwy 12-30 180° turns for acft over 12,500 lbs GWT prohibited on all movement areas. Avoid locked turns at all times. Twy G btn Rwy 08 end to Rwy 12-30 rstd to acft under 12,500 lbs. Aprn W ramp btn trml ramp and minuteman ramp clsd. Avoid locked turns at all times. Ldg fee for all coml acft and all acft over 12,500 lbs.



**AIRPORT MANAGER:** 406-728-4381

**WEATHER DATA SOURCES:** ASOS (406) 728-3743

**COMMUNICATIONS:** CTAF 118.4 ATIS 126.65 (406-549-2989) UNICOM 122.95

Ⓡ SPOKANE APP/DEP CON 124.9 (1400-0620Z‡)

Ⓡ SALT LAKE CENTER APP/DEP CON 127.075 (0620-1400Z‡)

MILLER PEAK RCO 122.2 (GREAT FALLS RADIO)

TOWER 118.4 (1300-0500Z‡) GND CON 121.9

**AIRSPACE:** CLASS D svc 1300-0500Z‡; other times CLASS E.

**RADIO AIDS TO NAVIGATION:** NOTAM FILE MSO.

(VL) (L) VOR/DME 112.8 MSO Chan 75 N46°54.48' W114°05.02' at fld. 3202/13E.

VOR unusable:

- 047°-067° byd 30 NM
- 067°-086° byd 30 NM blo 14,000'
- 086°-120° byd 27 NM blo 13,000'
- 086°-120° byd 36 NM blo 14,000'
- 086°-154° byd 20 NM blo 11,000'
- 120°-154° byd 35 NM blo 13,000'
- 172°-227° byd 25 NM
- 227°-247° byd 20 NM blo 12,000'
- 227°-247° byd 30 NM
- 228°-335° byd 40 NM
- 247°-262° byd 30 NM blo 12,000'
- 262°-277° byd 30 NM blo 10,000'
- 297°-347° byd 30 NM
- 347°-047° byd 10 NM
- 349°-359°
- 360°-157° byd 40 NM

DME unusable:

- 047°-067° byd 30 NM
- 067°-086° byd 30 NM blo 14,000'
- 086°-120° byd 27 NM blo 14,000'
- 086°-120° byd 39 NM
- 086°-154° byd 20 NM blo 11,000'
- 120°-154° byd 35 NM blo 13,000'
- 172°-227° byd 25 NM
- 227°-247° byd 20 NM blo 12,000'
- 227°-247° byd 30 NM
- 247°-262° byd 30 NM blo 12,000'
- 262°-277° byd 30 NM blo 10,000'
- 297°-347° byd 30 NM
- 347°-047° byd 10 NM

ILS 109.3 I-MSO Rwy 12. Class IA. LOC unusable byd 29° left of course byd 30° right of course.