

**BUFFALO**

**JOHNSON CO** (BYG)(KBYG) 3 NW UTC-7(-6DT) N44°22.87' W106°43.31'

**CHEYENNE**  
H-1E, 2G, L-13D  
IAP

4970 B NOTAM FILE BYG

**RWY 13-31:** H6143X75 (ASPH) S-12.5 PCN 24 F/D/X/T MIRL

1.1% up NW

**RWY 13:** PAPI(P4L)—GA 3.0° TCH 51'.

**RWY 31:** REIL. PAPI(P4L)—GA 3.0° TCH 42'.

**SERVICE:** S4 **FUEL** 100LL, JET A **LGT** ACTIVATE MIRL Rwy 13-31, PAPI Rwys 13 and Rwy 31 and REIL Rwy 31—122.8.

**AIRPORT REMARKS:** Attended Mon-Fri 1500-0000Z†, Sat 1500-1900Z‡. For svc after hrs call 307-217-2060 or 210-287-1548. 100LL avbl self svc credit card. For Jet A after hrs phone 307-217-2060 or 210-287-1548. Deer on and invof arpt. Terrain drops off both sides of Rwy 13-31. Rwy 31 +250' drop 170' left first 417'.

**AIRPORT MANAGER:** 307-684-9672

**WEATHER DATA SOURCES:** ASOS 135.425 (307) 684-2558.

**COMMUNICATIONS:** CTAF/UNICOM 122.8

**CRAZY WOMAN RCO** 122.2 (CASPER RADIO)

Ⓡ **SALT LAKE CENTER APP/DEP CON** 127.75

**CLEARANCE DELIVERY PHONE:** For CD ctc Salt Lake ARTCC at 801-320-2568.

**RADIO AIDS TO NAVIGATION:** NOTAM FILE CPR.

**CRAZY WOMAN (VH) (DH) VORV/DME** 117.3 CZI Chan 120

N43°59.98' W106°26.14' 319° 26.0 NM to fld.

4800/13E.

VOR unusable:

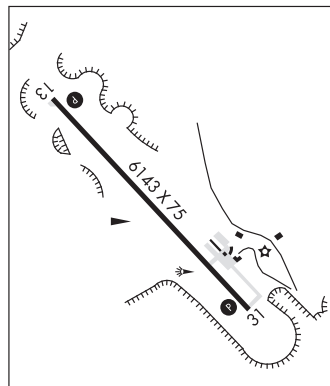
225°-230° byd 40 NM

231°-241° byd 40 NM blo 18,000'

242°-254° byd 40 NM

255°-265° byd 40 NM blo 25,000'

266°-300° byd 40 NM



**CAMP GUERNSEY** (See GUERNSEY on page 298)

**CASPER**

**CASPER/NATRONA CO INTL** (CPR)(KCPR) 7 NW UTC-7(-6DT)

N42°54.35' W106°27.82'

**CHEYENNE**  
H-3F, 5A, L-11E, 12F  
IAP, AD

5344 B LRA Class I, ARFF Index B NOTAM FILE CPR

**RWY 03-21:** H10165X150 (ASPH-GRVD) S-130, D-170, 2D-270

PCN 46 F/B/X/T HIRL

**RWY 03:** MALSR. PAPI(P4R)—GA 3.0° TCH 50'. RVR-T

**RWY 21:** REIL. VASI(V4L)—GA 3.0° TCH 56'. RVR-R

**RWY 08-26:** H8679X150 (ASPH-GRVD) S-85, D-140, 2D-260

PCN 44 F/B/X/T HIRL

**RWY 08:** MALSR. VASI(V4R)—GA 3.0° TCH 103'. RVR-T

**RWY 26:** REIL. PAPI(P4R)—GA 3.0° TCH 50'. RVR-R 0.4% up.

**RUNWAY DECLARED DISTANCE INFORMATION**

**RWY 03:** TORA-10165 TODA-10165 ASDA-10165 LDA-10165

**RWY 08:** TORA-8679 TODA-8679 ASDA-8679 LDA-8679

**RWY 21:** TORA-10165 TODA-10165 ASDA-10165 LDA-10165

**RWY 26:** TORA-8679 TODA-8679 ASDA-8679 LDA-8679

**SERVICE:** S4 **FUEL** 100LL, JET A **OX** 1, 2, 3, 4 **LGT** ATC-CTL. When ATCT clsd ACTVT MALSR Rwy 03 and 08; REIL Rwy 21; PAPI Rwy 03 and 26; HIRL Rwy 03-21 and Rwy 08-26; twy lgt—CTAF.

**AIRPORT REMARKS:** Attended continuously. Emerg pwr avbl Rwy 08-26 and Rwy 03-21. Rwy 08-26 and Rwy 03-21 have lgt'd distance remaining signs. Rwys clsd to FSL, TGL, and PLA aircraft more than 250,000 lbs except for 4 hrs PPR 307-995-3949. 225 ft crane 1 NM northeast of arpt. Flight Notification Service (ADCUS) available.

**AIRPORT MANAGER:** 307-472-6688

**WEATHER DATA SOURCES:** ASOS (307) 472-8960 LAWRS 1200-0400Z‡.

**COMMUNICATIONS:** CTAF 118.3 ATIS 126.15 UNICOM 122.95

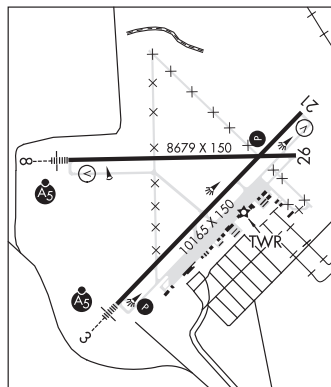
**RCO** 122.6 (CASPER RADIO)

Ⓡ **APP/DEP CON** 120.65 (1200-0400Z‡)

Ⓡ **DENVER CENTER APP/DEP CON** 135.6 (0400-1200Z‡)

**TOWER** 118.3 (1200-0400Z‡) **GND CON** 121.9 **CLNC DEL** 121.9

**CLEARANCE DELIVERY PHONE:** For CD ctc Casper Apxh at 307-472-8940, when Apxh clsd ctc Denver ARTCC at 303-651-4257.



**CONTINUED ON NEXT PAGE**

NW, 10 AUG 2023 to 5 OCT 2023

## CONTINUED FROM PRECEDING PAGE

AIRSPACE: CLASS D svc 1200-0400Z†; other times CLASS E.

RADIO AIDS TO NAVIGATION: NOTAM FILE CPR.

MUDDY MOUNTAIN (VH) (DH) VORW/DME 116.2 DDY Chan 109 N43°05.45' W106°16.62' 205° 13.8 NM to fld.  
5863/12E.

VOR unusable:

132°-142° byd 40 NM blo 18,000'

143°-153° byd 40 NM

154°-164° byd 40 NM blo 10,800'

154°-164° byd 81 NM

165°-180° byd 40 NM

ILS 111.3 I-SYD Rwy 03. Class IB. Syd LOC is unmonitored from 0400-1200Z† daily.

COMM/NAV/WEATHER REMARKS: Emerg freq 121.5 not avbl at twr.

**HARFORD FLD** (HAD)(KHAD) 5 N UTC-7(-6DT) N42°55.46' W106°18.57' **CHEYENNE**

5370 NOTAM FILE CPR

RWY 07-25: 3810X30 (DIRT)

RWY 07: Bldg.

AIRPORT REMARKS: Unattended. Antelope on and invof arpt. Line of sight problem btn Rwy 07 and Rwy 25, Rwy 25 slopes uphill first 510'. Abandoned arpt 1.5 miles west.

AIRPORT MANAGER: 307-262-0606

COMMUNICATIONS: CTAF 122.9

CLEARANCE DELIVERY PHONE: For CD ctc Casper Apch at 307-472-8940, when Apch clsd ctc Denver ARTCC at 303-651-4257.

**CASPER** N43°07.52' W106°20.43' **CHEYENNE**

RCO 122.6 (CASPER RADIO)

L-11E, 12F

**CENTRAL WYOMING RGNL** (See RIVERTON on page 308)

**CHEROKEE** N41°45.34' W107°34.92' NOTAM FILE CPR. **CHEYENNE**

(H) (H) VORW/DME 115.0 CKW Chan 97 065° 17.4 NM to Rawlins Muni/Harvey Fld. 7050/15E.

RCO 122.4 (CASPER RADIO)

H-3E, L-11E