

LONGVIEW

EAST TEXAS RGNL (GGG)(KGGG) 8 S UTC-6(-5DT) N32°23.04' W94°42.69'

MEMPHIS
H-61, L-17D
IAP, AD

- 366 B ARFF Index—See Remarks NOTAM FILE GGG
- RWY 13-31:** H10000X150 (ASPH-GRVD) S-95, D-155, 2S-175, 2D-288 PCN 51 F/C/X/T HIRL
- RWY 13:** MALSR. RVR-T Thld dsplcd 800'.
- RWY 31:** PAPI(P4L)—GA 3.0° TCH 50'. RVR-R
- RWY 18-36:** H6110X150 (ASPH-GRVD) S-95, D-155, 2S-175, 2D-280 PCN 29 F/C/X/T MIRL
- RWY 18:** PAPI(P4L)—GA 3.0° TCH 59'. Tree.
- RWY 36:** PAPI(P4R)—GA 3.0° TCH 50'. Tree.

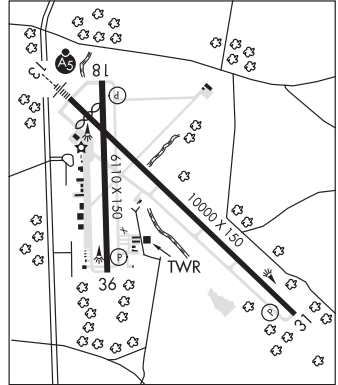
LAND AND HOLD—SHORT OPERATIONS

LDG RWY	HOLD—SHORT POINT	AVBL LDG DIST
RWY 31	18-36	8100
RWY 36	13-31	4080

RUNWAY DECLARED DISTANCE INFORMATION

- RWY 13:** TORA-10000 TODA-10000 ASDA-10000 LDA-9200
- RWY 18:** TORA-6109 TODA-6109 ASDA-6109 LDA-6109
- RWY 31:** TORA-10000 TODA-10000 ASDA-9200 LDA-9200
- RWY 36:** TORA-6109 TODA-6109 ASDA-6109 LDA-6109

SERVICE: S4 FUEL 100LL, JET A OX3, 4 LGT HIRL Rwy 13-31 preset med intst; to incr intst actvt—CTAF. When ATCT clsd actvt MALSR Rwy 13—CTAF. MIRL Rwy 18-36 not avbl when ATCT clsd. Rwy 36 PAPI unsbl byd 8° right of rwy centerline.



AIRPORT REMARKS: Attended 1200-0300Z†. Birds on and invof arpt (seasonal). For fuel after hrs call 903-643-8748. Class I, ARFF Index A. PPR for unscheduled air carrier ops with more than 30 passenger seats. Index B avbl on request. See Special Notices — Extensive Flight Training Advisory

AIRPORT MANAGER: 903-643-3031

WEATHER DATA SOURCES: ASOS (903) 643-4029 LAWRS.

COMMUNICATIONS: CTAF 119.2 ATIS 119.65 UNICOM 122.95

GREGG RCO 122.2 (FORT WORTH RADIO)

Ⓡ **LONGVIEW APP/DEP CON** 128.75 (West at or blo 7000') 124.675 (West at or blo 5000') 124.275 (East at or blo 4000') 127.325 (At or abv 4000') (East 4,500'-12,000') 118.25 (1200-0400Z†)

Ⓡ **FORT WORTH CENTER APP/DEP CON** 126.325 (0400-1200Z†)

EASTEX TOWER 119.2 (1200-0400Z†) **GND CON** 121.6

AIRSPACE: CLASS D svc 1200-0400Z†; other times CLASS G.

TRSA ctc **APP CON** within 30 NM

RADIO AIDS TO NAVIGATION: NOTAM FILE GGG.

GREGG COUNTY (VL) (H) VORTACW 112.9 GGG Chan 76 N32°25.07' W94°45.19' 127° 2.9 NM to fld. 329/7E.

TACAN AZIMUTH unusable:

- 045°-070° byd 25 NM blo 2,500'
- 180°-225° byd 33 NM blo 3,500'
- 258°-268° byd 26 NM blo 4,500'
- 325°-340° byd 37 NM blo 2,500'
- 248°-258° byd 34 NM blo 8,100'

DME unusable:

- 045°-070° byd 25 NM blo 2,500'
- 180°-225° byd 33 NM blo 3,500'
- 258°-268° byd 26 NM blo 4,500'
- 325°-340° byd 37 NM blo 2,500'

VOR unusable:

- 138°-152° byd 40 NM
- 188°-192° byd 40 NM
- 210°-230° byd 40 NM

VEELS NDB (LOMW) 410 GG N32°27.33' W94°47.85' 131° 6.1 NM to fld. 263/3E.

ILS 109.5 I-GGG Rwy 13. Class IA. LOM VEELS NDB. Unmonitored when ATCT closed.