

**GAINESVILLE RGNL** (GNV)(KGNV) 3 NE UTC-5(-4DT) N29°41.40' W82°16.31'

**JACKSONVILLE**

151 B Class I, ARFF Index B NOTAM FILE GNV

H-8H, 12F, L-21D, 24G

**RWY 11-29:** H7504X150 (ASPH-GRVD) S-120, D-218, 2S-175,

2D-372, 2D/2D2-870 PCN 56 F/B/W/T HIRL 0.6% up W

**RWY 11:** REIL. PAPI(P4L)—GA 3.0° TCH 54'. RVR-R Trees.

**RWY 29:** MALSR. PAPI(P4R)—GA 3.0° TCH 55'. RVR-T Trees.

**RWY 07-25:** H4158X100 (ASPH-GRVD) S-107, D-172, 2S-175

PCN 43 F/B/X/T MIRL 0.5% up SW

**RWY 07:** PAPI(P4L)—GA 3.0° TCH 44'. Trees.

**RWY 25:** PAPI(P4L)—GA 3.0° TCH 42'. Trees.

**SERVICE:** S4 FUEL 100, JET A OX 1, 3 LGT When ATCT clsd, ACTVT

MALSR Rwy 29; MIRL Rwy 07-25; HIRL Rwy 11-29—CTAF.

**AIRPORT REMARKS:** Attended continuously. Wildlife on and in/ov arpt. High

density migratory birds dur dalgt hrs in/ov all rws. Arpt sfc cond not

mntd btw 0430-0900Z† dly. Banner towing na exc 72 hr

PPR—amgr. Rwy 29 hldg psn sign at 07-25 right side misg. Portions

of Rwy 07-25 and NE 1000' of Twy A not vsb fm ATCT; blocked by

VORTAC bldg. Rwy 07-25 not avbl for sked acr ops with more than 9

pax seats or unsked acr at least 31 pax seats. When ATCT clsd, acct

more than 12,500 lbs ctc FBO for prkg instr prior to exiting Twy A due

to ireg pavement strengths—352-335-4681. Rwy 11-29 grvd full

length X 130' wide ctr portion. GA ramp lmtd to acct 90,000 lbs max

gross tkof wt, dual wheel or blw; others PPR. Rwy 07-25 acr NA.

**AIRPORT MANAGER:** 352-373-0249

**WEATHER DATA SOURCES:** ASOS 127.15 (352) 335-8672.

**COMMUNICATIONS:** CTAF 119.55 ATIS 127.15 UNICOM 122.95

GATORS RCO 122.2 (GAINESVILLE RADIO)

® **JACKSONVILLE APP/DEP CON** 118.175 (10,000' and blw)

**TOWER** 119.55 (1145-0330Z†) **GND CON** 121.7

**CLEARANCE DELIVERY PHONE:** For CD if una to ctc on FSS freq, ctc Jacksonville Apch at 904-741-0284.

**AIRSPACE:** CLASS D svc 1145-0330Z†; other times CLASS E.

**RADIO AIDS TO NAVIGATION:** NOTAM FILE GNV.

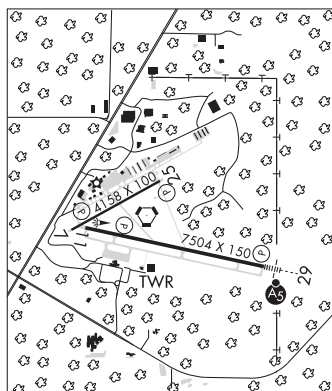
**GATORS (L) VORTACW** 116.2 GNV Chan 109 N29°41.53' W82°16.38' at fld. 128/4W.

VORTAC unusable:

Byd 25 NM blo 3,000'

**WYND5 NDB (MHW/LOM)** 269 GN N29°40.20' W82°10.33' 287° 5.3 NM to fld. 114/4W.

**ILS** 111.3 I-GNV Rwy 29. Class IT. LOM WYND5 NDB.



**GATORS** N29°41.53' W82°16.38' NOTAM FILE GNV.

**JACKSONVILLE**

(L) (L) **VORTACW** 116.2 GNV Chan 109 at Gainesville Rgnl. 128/4W.

H-8H, 12F, L-21D, 24G

VORTAC unusable:

Byd 25 NM blo 3,000'

**RCO** 122.2 (GAINESVILLE RADIO)

**GEORGE T LEWIS** (See CEDAR KEY on page 89)

**GREENVILLE** N30°33.08' W83°46.99' NOTAM FILE GNV.

**JACKSONVILLE**

(L) (L) **VORTAC** 113.65 GEF Chan 83(Y) 345° 21.6 NM to Thomasville Rgnl. 220/1E.

L-21D, 22J

VOR unusable:

360°-013° blo 5,000'

181°-359°

**RCO** 122.1R 113.65T (GAINESVILLE RADIO)

**HALIFAX RIVER SPB** (See HOLLY HILL on page 108)

**HERLONG RECREATIONAL** (See JACKSONVILLE on page 115)